

Item 03

18/4919

Abbey Manufacturing Estate

Mount Pleasant

Wembley

HA0

Site photo pack

Item 03 18/4919 Site Photo Legend



Photo 1: View across southern edge of the site from the south west



Photo 2: View from the south of the site across to the east



Photo 3: View across to the east from south side (Carlyon Road houses to the right)



Photo 4: View of the site from the south east corner



Photo 5: View across the southern edge of the site from the east



Photo 6: View from Liberty Centre towards Abbey Wharf and Abbey Manufacturing Estate beyond



Photo 7: View of eastern entrance to site from Mount Pleasant



Photo 8: View of eastern entrance to site from Mount Pleasant



Photo 9: View of northern edge of site from Woodside Close



Photo 10: View of northern edge of site from Woodside Close



Photo 11: View of northern edge of site from Woodside Close



Photo 12: View of western entrance to site from Woodside Place



Photo 13: View of south western entrance to site from Woodside End



Photo 14: View of south western entrance to site from Woodside End



Item 04

19/1241

**Car Park next to Sudbury
Town Station, Station
Approach, Wembley HA0 2LA**

Site photo pack

Item 05

19/1241

Site Photo Legend



Photo 1: Front façade of Sudbury Town Station



Photo 2: Front forecourt showing bus and taxi stand on Station Approach



Photo 3: Existing Blue Badge spaces to front of car park



Photo 4: Existing entrance to car park and TFL depot to rear



Photo 5: View looking south-east from car park showing underground line to south



Photos 6 and 7: View showing rear and side facing windows of 29 Station Approach



Photos 8 and 9: View showing rear outbuilding of 29 Station Approach and garages on northern boundary of site



Photos 10 and 11: View looking north from car park showing boundary treatment to properties on Barham Close

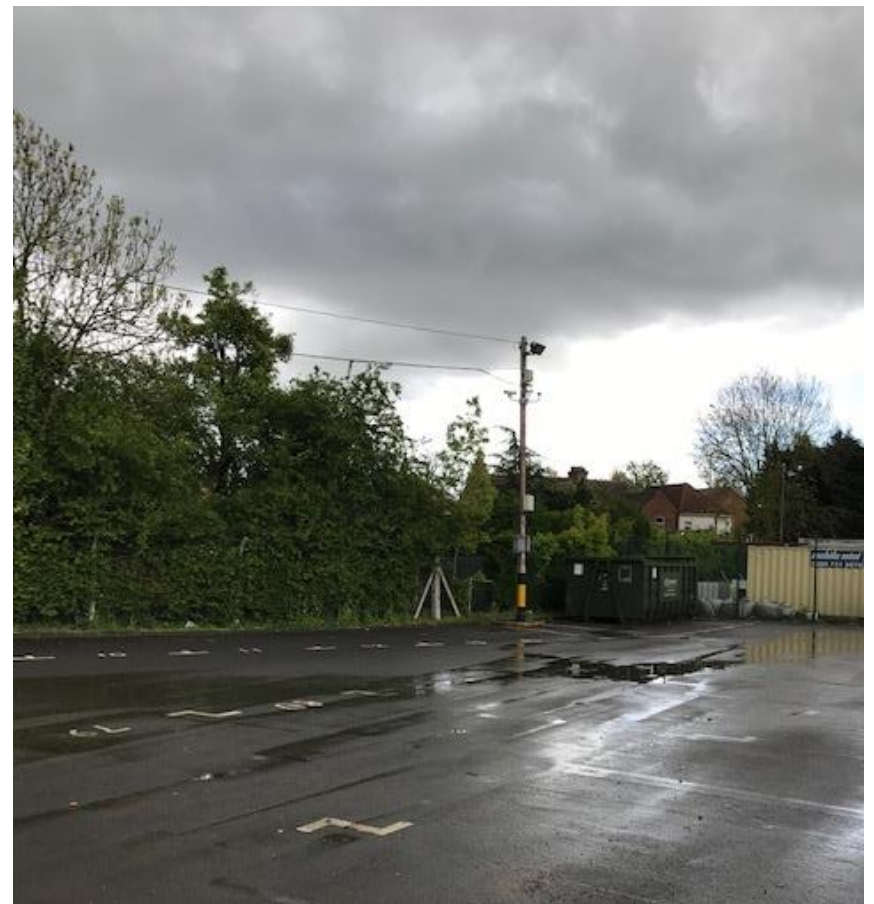


Photo 12: View of rear garden and elevation of No.8
Barham Close



Photo 13: View of rear garden of Nos. 8 and 9 and outbuildings at 9 Barham Close



Photo 14: Birds-eye view showing site in context with adjoining properties, particularly relationships to Barham Close

29 Station Approach



Photo 15: Longer street view looking south from Station Approach



Item 05

19/3092

Ujima House

388 High Road

Wembley

HA9 6AR

Site photo pack

Item 5 19/3092 Site Photo Legend

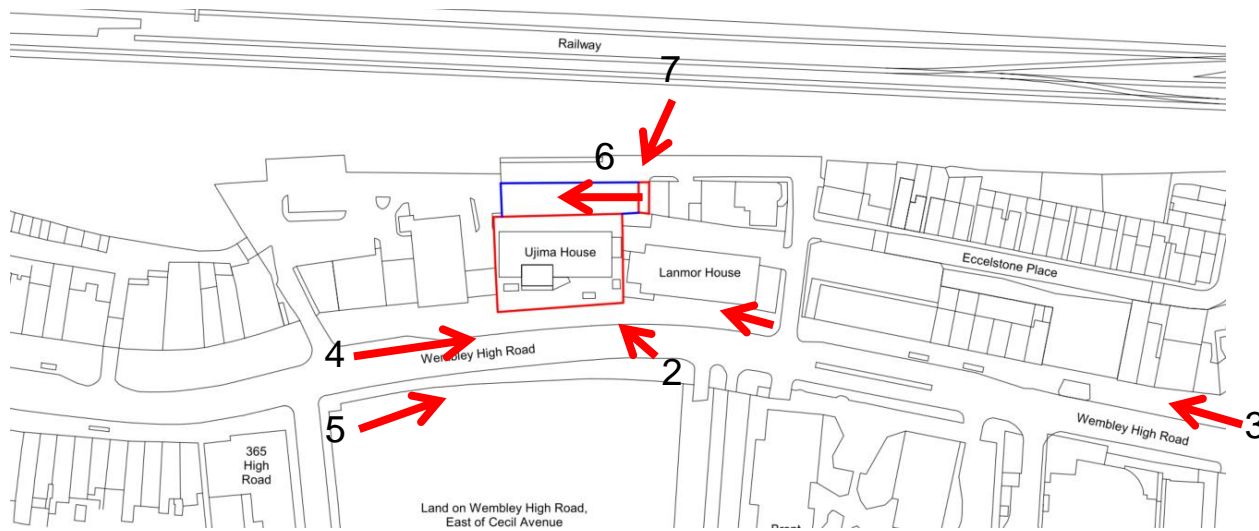


Photo 1: view of site from east



Photo 2: view of site from southeast



Photo 3: streetscene view from east



Photo 4: view of site from west



Photo 5: view of site from southwest



Photo 6: view of car park from east



Photo 7: view of site from northeast

