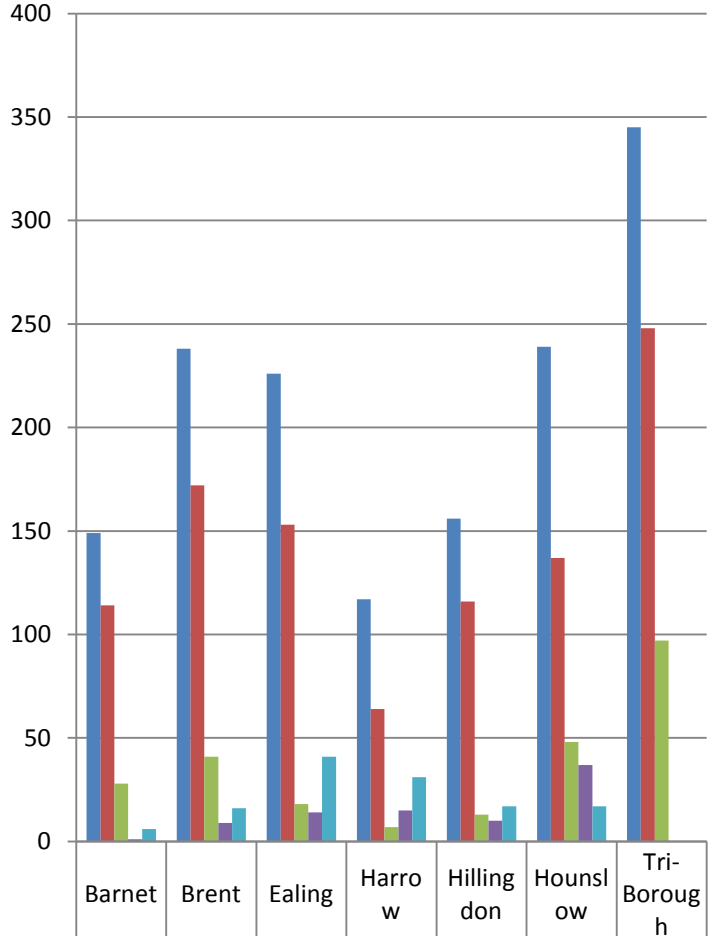


# **West London Children's Efficiency Programme**

## **Ofsted Fostering Data 13\_14**



# Foster Places as at 31<sup>st</sup> March

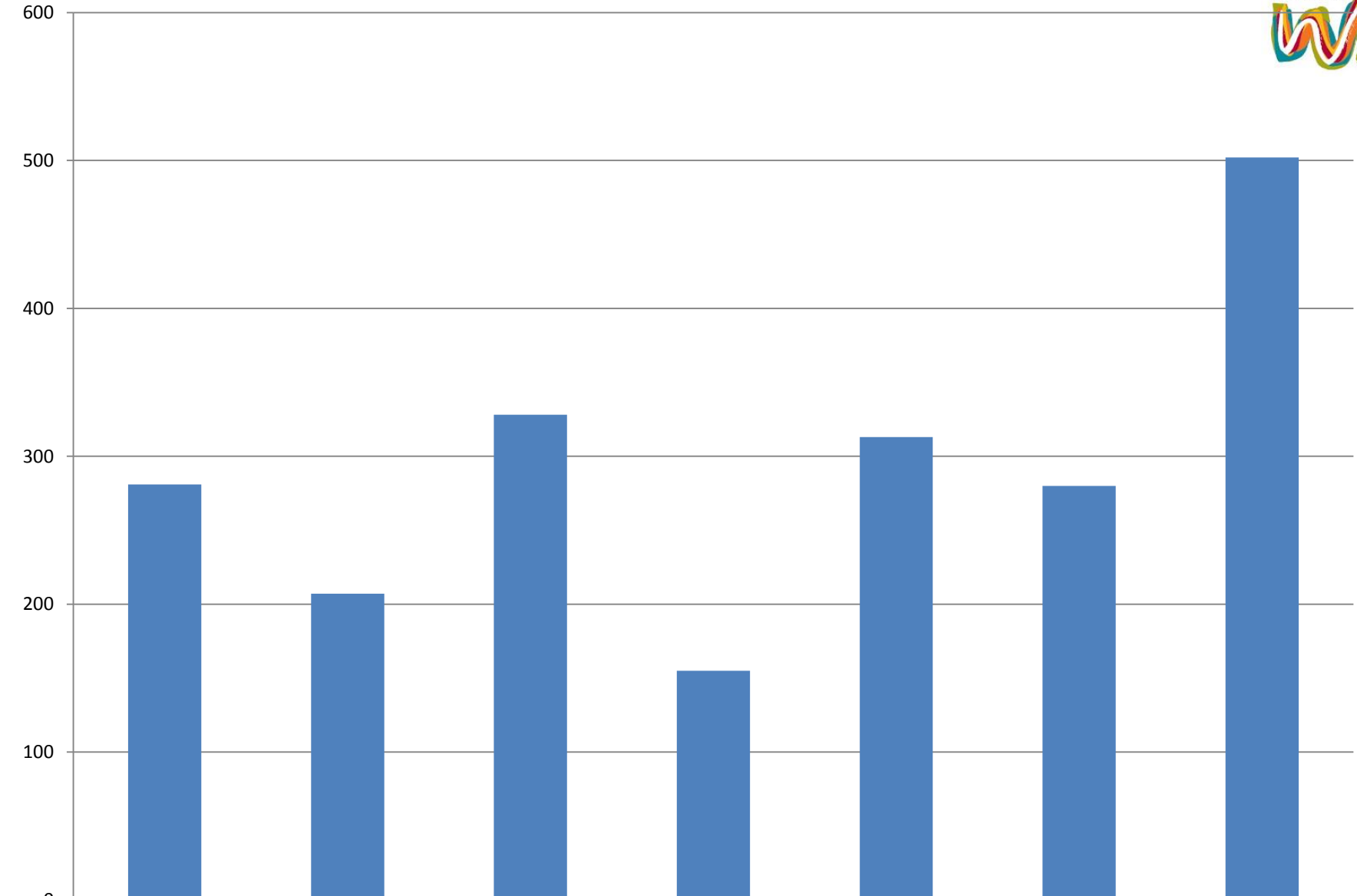


- Sum of A1.1 How many approved foster places 31st March
- Sum of A1.2 How any filled 31st March
- Sum of A1.3 How many vacant 31st March
- Sum of A1.4 How many not available due to needs of children 31st March
- Sum of A1.5 How many not available due to carer circumstances 31st March

	Barnet	Brent	Ealing	Harrow	Hillingdon	Hounslow	Tri-Borough
■ Sum of A1.1 How many approved foster places 31st March	149	238	226	117	156	239	345
■ Sum of A1.2 How any filled 31st March	114	172	153	64	116	137	248
■ Sum of A1.3 How many vacant 31st March	28	41	18	7	13	48	97
■ Sum of A1.4 How many not available due to needs of children 31st March	1	9	14	15	10	37	0
■ Sum of A1.5 How many not available due to carer circumstances 31st March	6	16	41	31	17	17	0



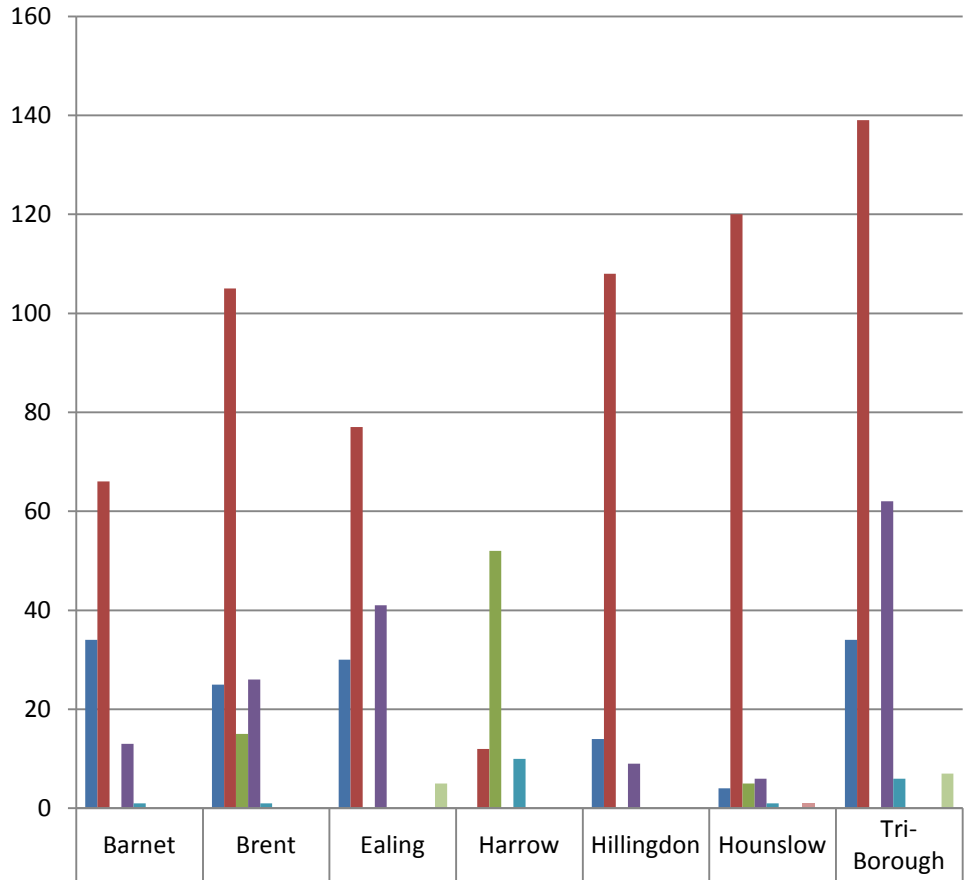
# Total Number of CYP Placed Between April 2013 - March 2014 (Excluding short breaks)



	Barnet	Brent	Ealing	Harrow	Hillingdon	Hounslow	Tri-Borough
■ Total	281	207	328	155	313	280	502



# Types of Foster Care Provided

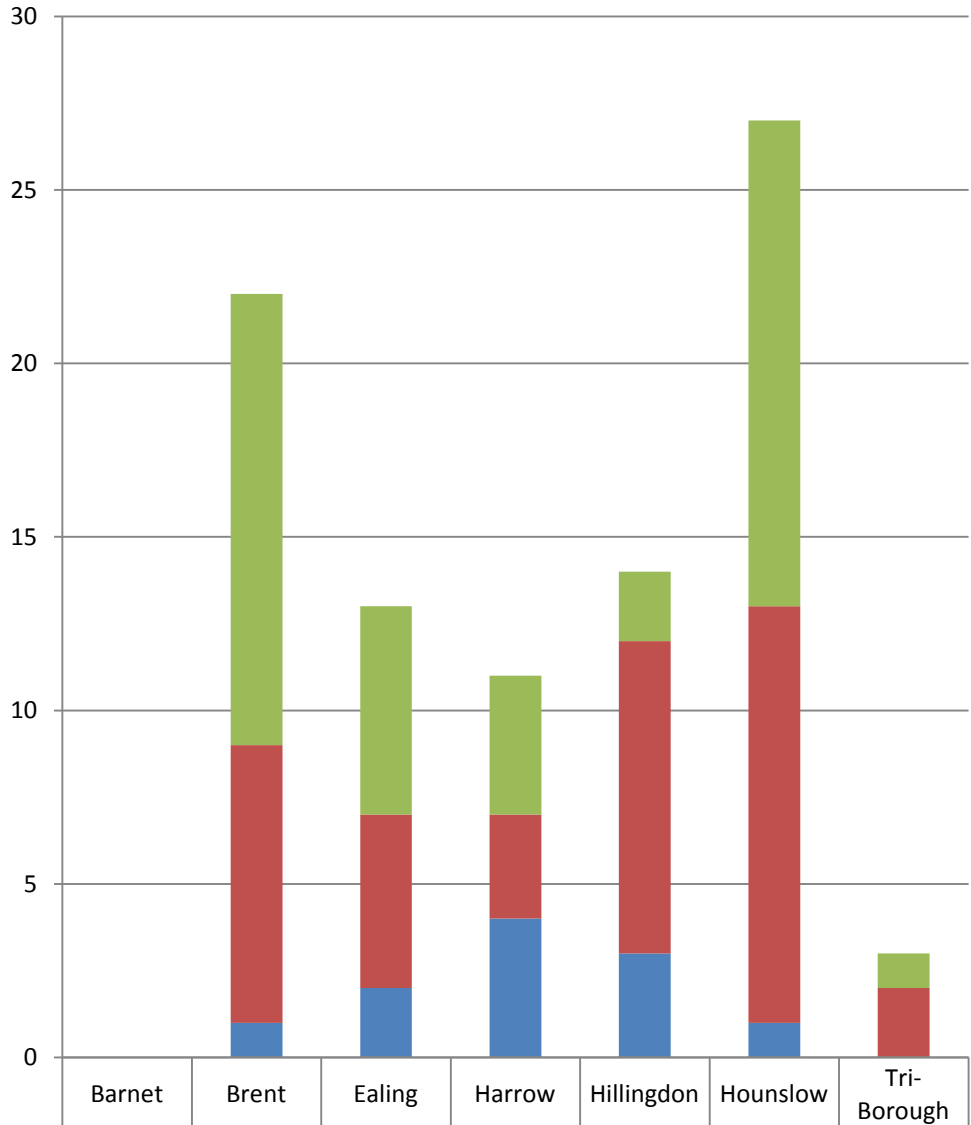


- Sum of A3.1 Permanent long term
- Sum of A3.2 Short term
- Sum of A3.3 Emergency
- Sum of A3.4 Family & Friends
- Sum of A3.5 Parent & Child
- Sum of A3.6 Parent & Child not fostering
- Sum of A3.7 MDTFC
- Sum of A3.8 Remand
- Sum of A3.9 Other

■ Sum of A3.1 Permanent long term	34	25	30	0	14	4	34
■ Sum of A3.2 Short term	66	105	77	12	108	120	139
■ Sum of A3.3 Emergency	0	15	0	52	0	5	0
■ Sum of A3.4 Family & Friends	13	26	41	0	9	6	62
■ Sum of A3.5 Parent & Child	1	1	0	10	0	1	6
■ Sum of A3.6 Parent & Child not fostering	0	0	0	0	0	0	0
■ Sum of A3.7 MDTFC	0	0	0	0	0	0	0
■ Sum of A3.8 Remand	0	0	0	0	0	1	0
■ Sum of A3.9 Other	0	0	5	0	0	0	7



# Unplanned Endings April 2013 – March 2014

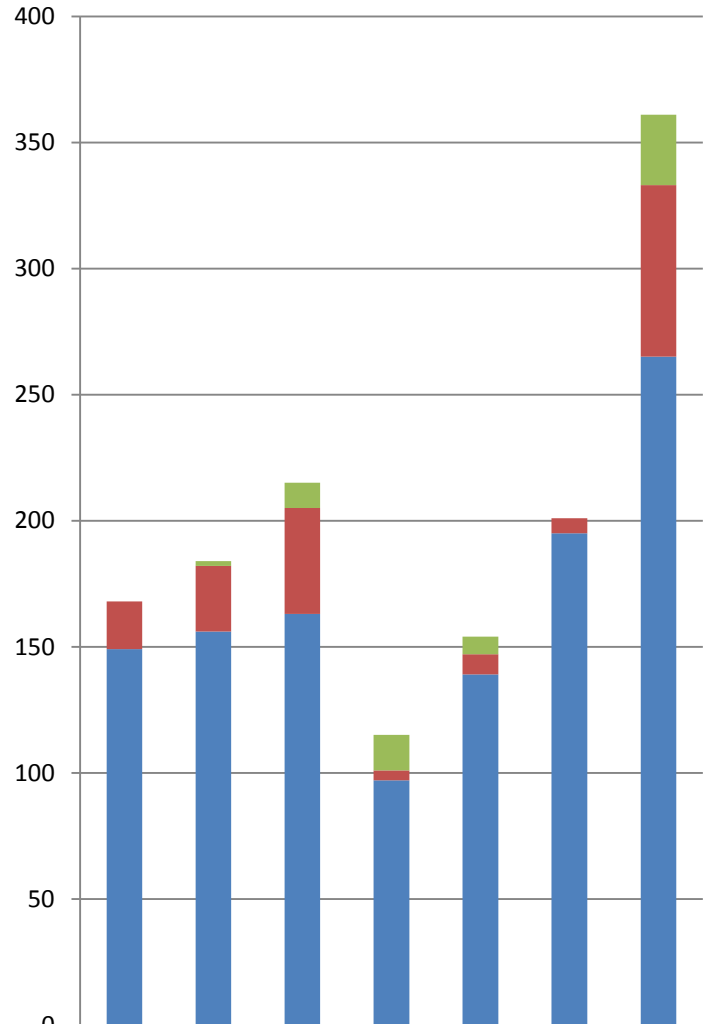


- Sum of A5.3 Unplanned ends Other
- Sum of A5.2 Unplanned ends FC request
- Sum of A5.1 Unplanned ends 24hrs

■ Sum of A5.3 Unplanned ends Other	0	13	6	4	2	14	1
■ Sum of A5.2 Unplanned ends FC request	0	8	5	3	9	12	2
■ Sum of A5.1 Unplanned ends 24hrs	0	1	2	4	3	1	0



# Number of Approved Foster Carers as at 31<sup>st</sup> March 2014

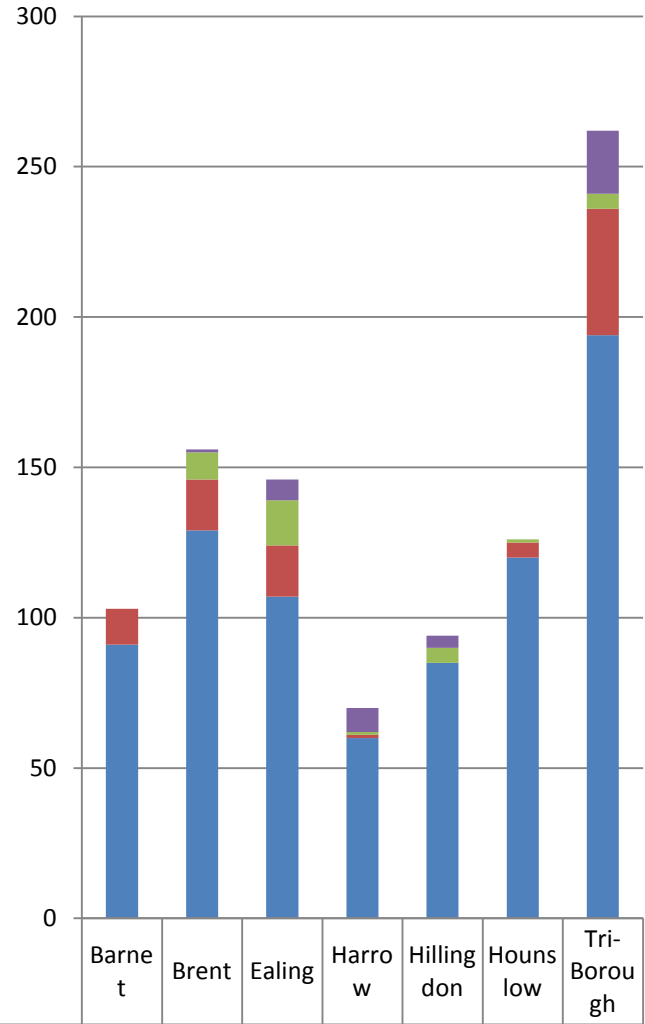


- Sum of B1.3 Approved Exclusive Short Breaks
- Sum of B1.2 Approved Family & Friends Carers
- Sum of B1.1 Approved Foster Carers as at 31st March

	Barnet	Brent	Ealing	Harrow	Hillingdon	Hounslow	Tri-Borough
<span style="color: green;">■</span> Sum of B1.3 Approved Exclusive Short Breaks	0	2	10	14	7	0	28
<span style="color: red;">■</span> Sum of B1.2 Approved Family & Friends Carers	19	26	42	4	8	6	68
<span style="color: blue;">■</span> Sum of B1.1 Approved Foster Carers as at 31st March	149	156	163	97	139	195	265



# Fostering Households As at 31<sup>st</sup> March 2014

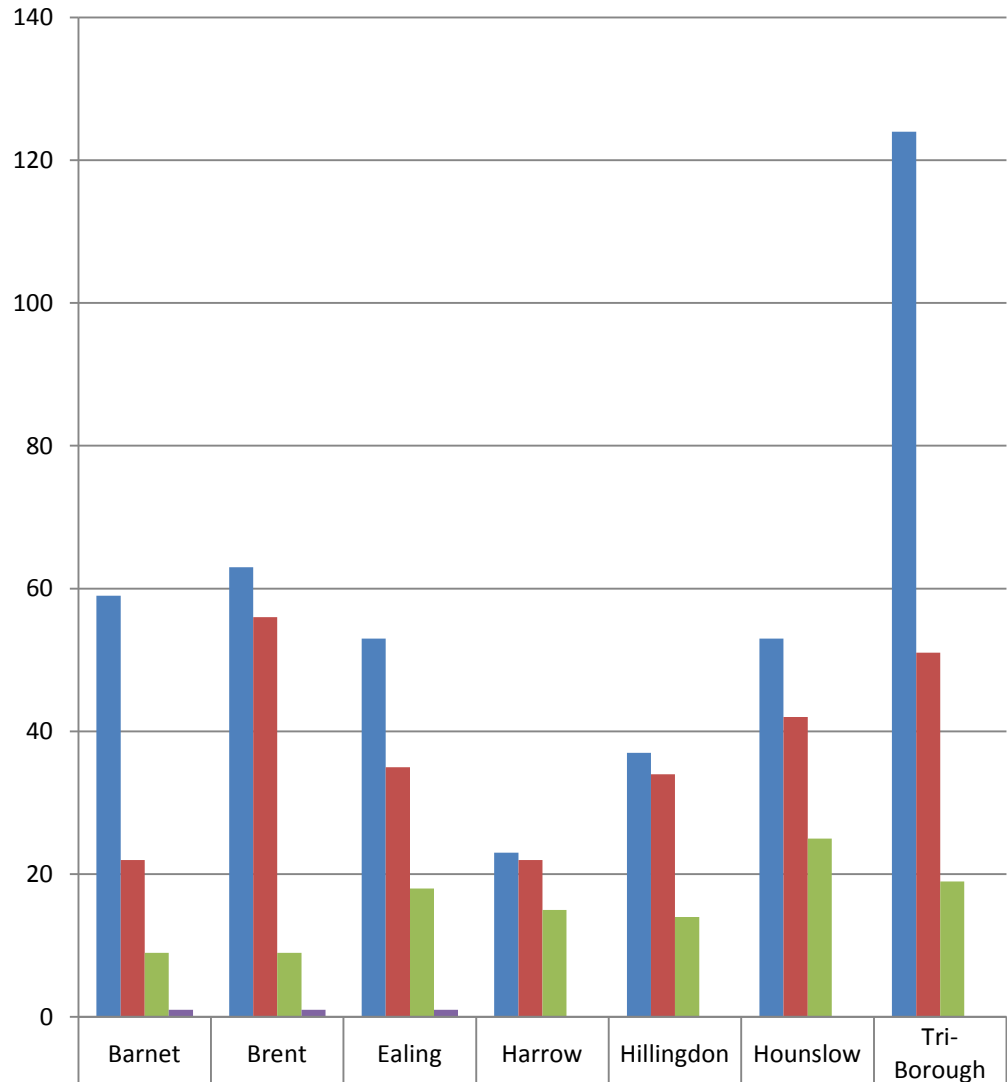


- Sum of C1.4 Households exclusively Short Breaks at 31st March
- Sum of C1.3 Connected Persons Households at 31st March
- Sum of C1.2 Family & Friends Households at 31st March
- Sum of C1.1 Fostering Households at 31st March

■ Sum of C1.4 Households exclusively Short Breaks at 31st March	0	1	7	8	4	0	21
■ Sum of C1.3 Connected Persons Households at 31st March	0	9	15	1	5	1	5
■ Sum of C1.2 Family & Friends Households at 31st March	12	17	17	1	0	5	42
■ Sum of C1.1 Fostering Households at 31st March	91	129	107	60	85	120	194



# Approval Ranges

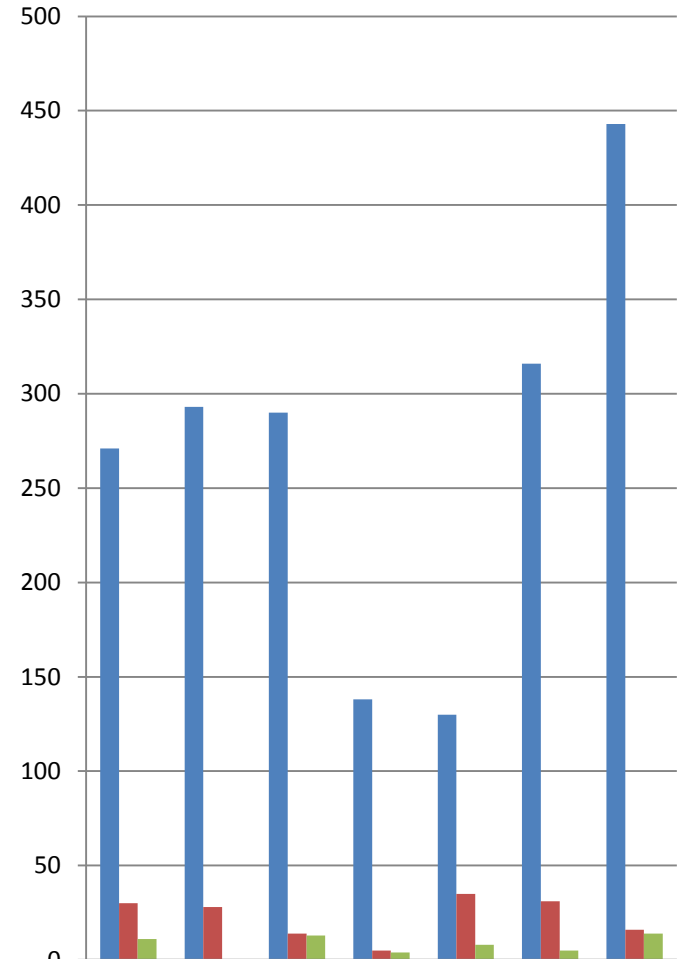


Sum of C1.5 Approved for 1	59	63	53	23	37	53	124
Sum of C1.6 Approved for 2	22	56	35	22	34	42	51
Sum of C1.7 Approved for 3	9	9	18	15	14	25	19
Sum of C1.8 Approved for more than 4	1	1	1	0	0	0	0





# Recruitment of Fostering Households April 2013 – March 2014

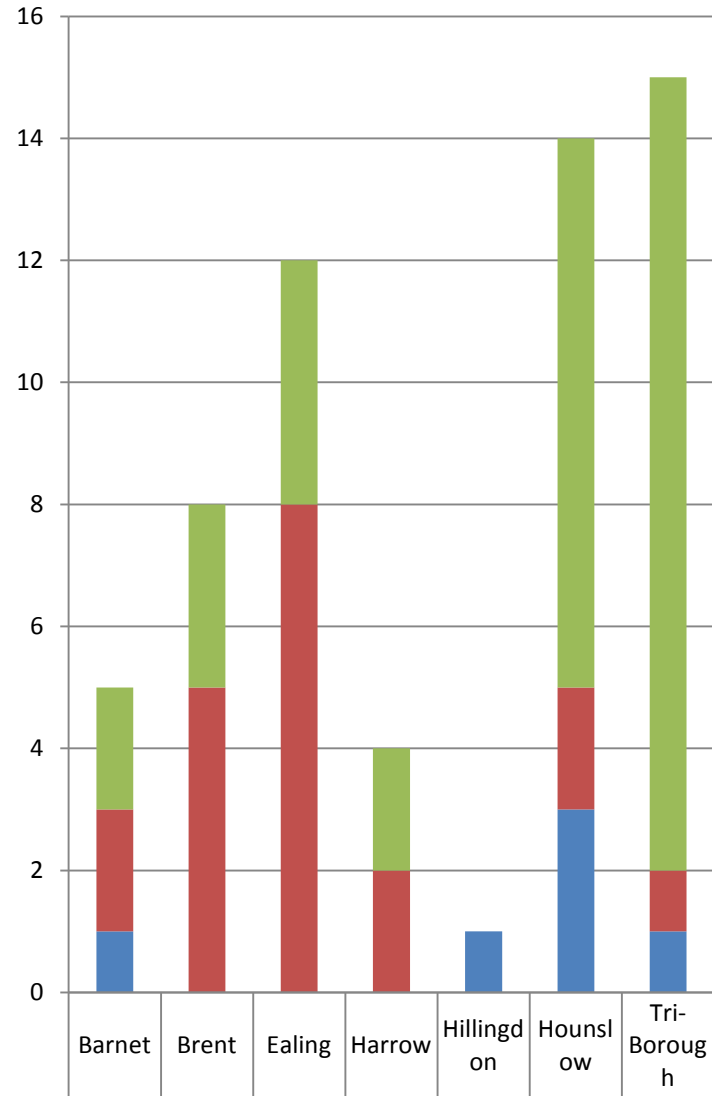


- Sum of C2.1 Initial Enquiries April13- March14
- Sum of C2.2 Applications from Prospective Households April13- March14
- Sum of C2.3 Applications from Prospective Housholds prior to 1 April 2013 not Decided

■ Sum of C2.1 Initial Enquiries April13- March14	271	293	290	138	130	316	443
■ Sum of C2.2 Applications from Prospective Households April13- March14	30	28	14	5	35	31	16
■ Sum of C2.3 Applications from Prospective Housholds prior to 1 April 2013 not Decided	11	0	13	4	8	5	14



# De-Registrations April 2013 – March 2014 (Households)

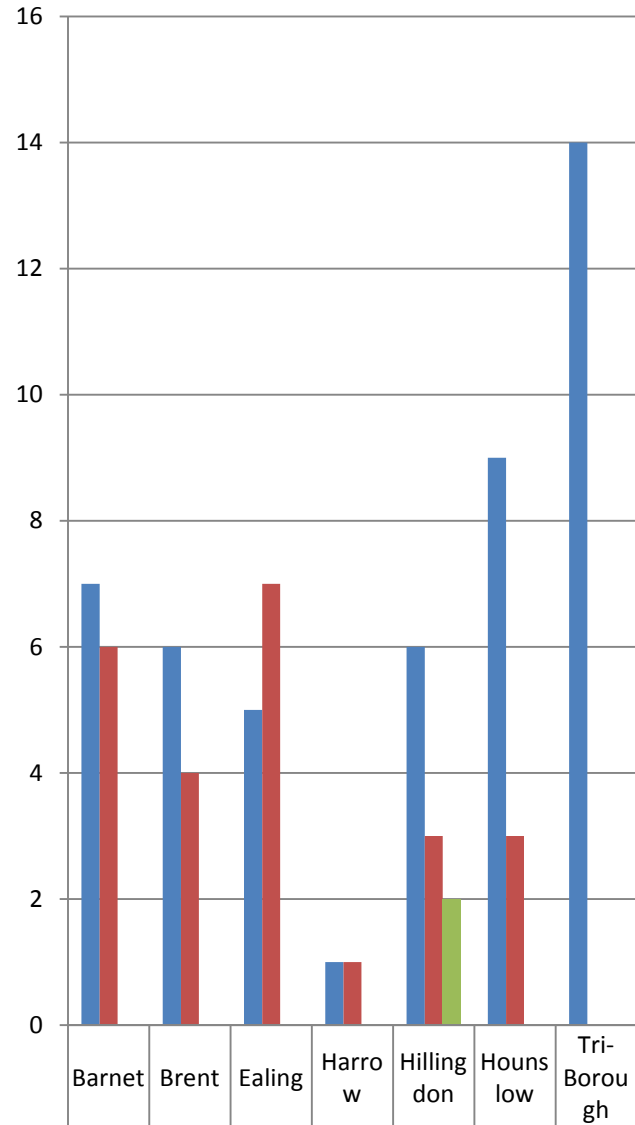


- Sum of C2.7 De-Reg initiated by Foster Carer
- Sum of C2.6 De-Reg initiated by Fostering Service
- Sum of C2.5 De-Reg Transfer to a different Fostering Service

<span style="color: green;">■</span> Sum of C2.7 De-Reg initiated by Foster Carer	2	3	4	2	0	9	13
<span style="color: red;">■</span> Sum of C2.6 De-Reg initiated by Fostering Service	2	5	8	2	0	2	1
<span style="color: blue;">■</span> Sum of C2.5 De-Reg Transfer to a different Fostering Service	1	0	0	0	1	3	1



# Applications Withdrawn/Declined April 2013 – March 2014 (Households)

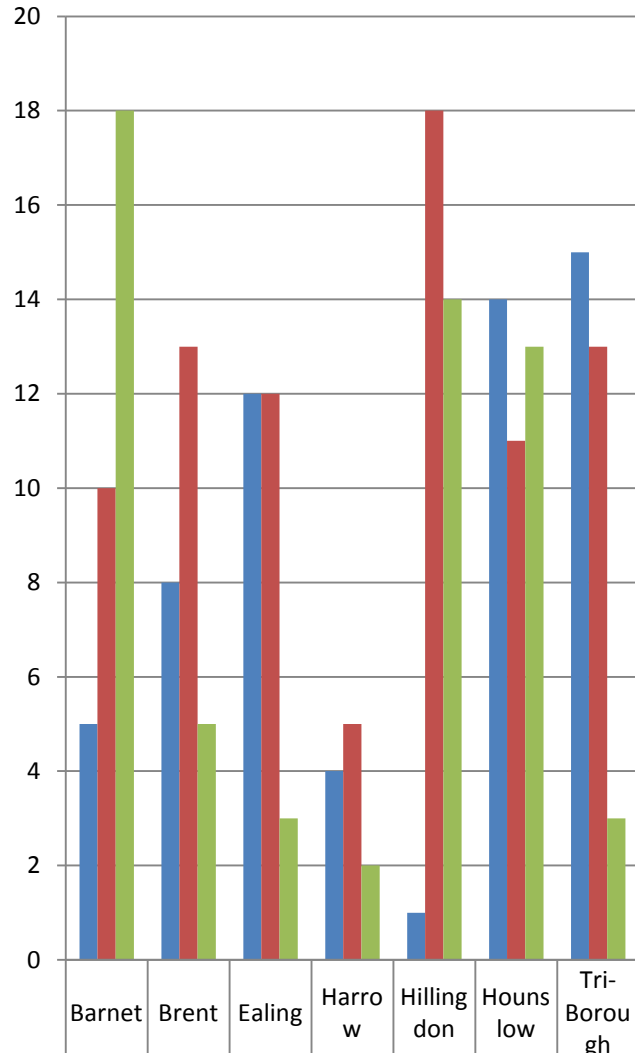


- Sum of C3.2 Withdrawn by Applicant April 13-March 14
- Sum of C3.3 Withdrawn by Service April 13-March 14
- Sum of C3.4 Rejected following Panel April 13-March 14

■ Sum of C3.2 Withdrawn by Applicant April 13-March 14	7	6	5	1	6	9	14
■ Sum of C3.3 Withdrawn by Service April 13-March 14	6	4	7	1	3	3	0
■ Sum of C3.4 Rejected following Panel April 13-March 14	0	0	0	0	2	0	0



# Approvals (inc In Process) Vs. De-Registrations April 2013 – March 2014 (Households)

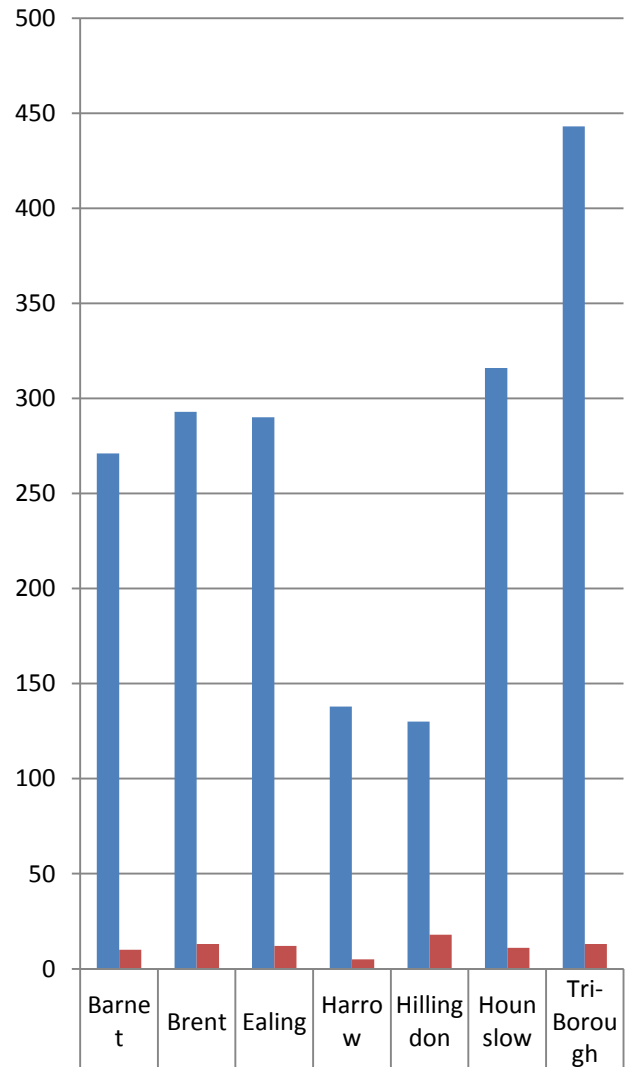


- Sum of C2.4 How many Fostering Households De-registered April 13-March 14
- Sum of C3.1 Approved Fostering Households April 13-March 14
- Sum of C3.5 Applications in progress April 13- March 14

<span style="color: blue;">■</span> Sum of C2.4 How many Fostering Households De-registered April 13-March 14	5	8	12	4	1	14	15
<span style="color: red;">■</span> Sum of C3.1 Approved Fostering Households April 13-March 14	10	13	12	5	18	11	13
<span style="color: green;">■</span> Sum of C3.5 Applications in progress April 13- March 14	18	5	3	2	14	13	3



# Initial Enquires Vs. Approvals April 2013 – March 2014 (Households)



■ Sum of C2.1 Initial Enquiries April13- March14	271	293	290	138	130	316	443
■ Sum of C3.1 Approved Fostering Households April 13- March 14	10	13	12	5	18	11	13



# Recruitment Overview 2013/14



LA	Fostering Households @ 31 <sup>st</sup> March 2014	Initial Enquiries 2013/14	Applications 2013/14	Applications Brought Forward From 2012/13	Total Number of Applications and Brought Forward	De-Registrations 2013/14	Approved 2013/14	Applications in Process to Carry into 14/15
Barnet	103	271	30	11	41	5	10	18
Brent	156	293	28	0	28	8	13	5
Ealing	146	290	14	13	27	12	12	3
Harrow	70	138	5	4	9	4	5	2
Hillingdon	94	130	35	8	43	1	18	14
Hounslow	126	316	31	5	36	14	11	13
Tri-Borough	262	443	16	14	30	15	13	3
West London	<b>957</b>	<b>1881</b>	<b>159</b>	<b>55</b>	<b>214</b>	<b>59</b>	<b>82</b>	<b>58</b>

# Recruitment Analysis 2013/14



LA	NET Growth/Loss	% Share of WL NET Growth	Initial Enquiries Conversion Rate to Application %	Initial Enquiries Conversion Rate to Approval %
Barnet	5	21.7%	11.1%	3.7%
Brent	5	21.7%	9.6%	4.4%
Ealing	0	0.0%	4.8%	4.1%
Harrow	1	4.3%	3.6%	3.6%
Hillingdon	17	73.9%	26.9%	13.8%
Hounslow	-3	-13.0%	9.8%	3.5%
Tri-Borough	-2	-8.7%	3.6%	2.9%
<b>West London</b>	<b>23</b>		<b>8.5%</b>	<b>4.4%</b>