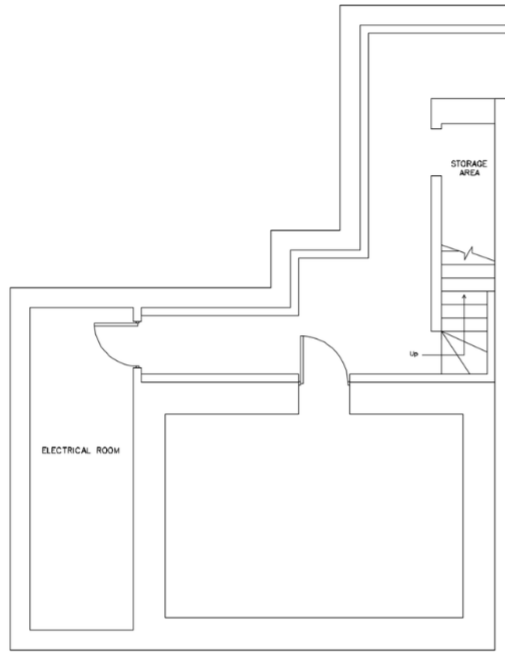


NOTES

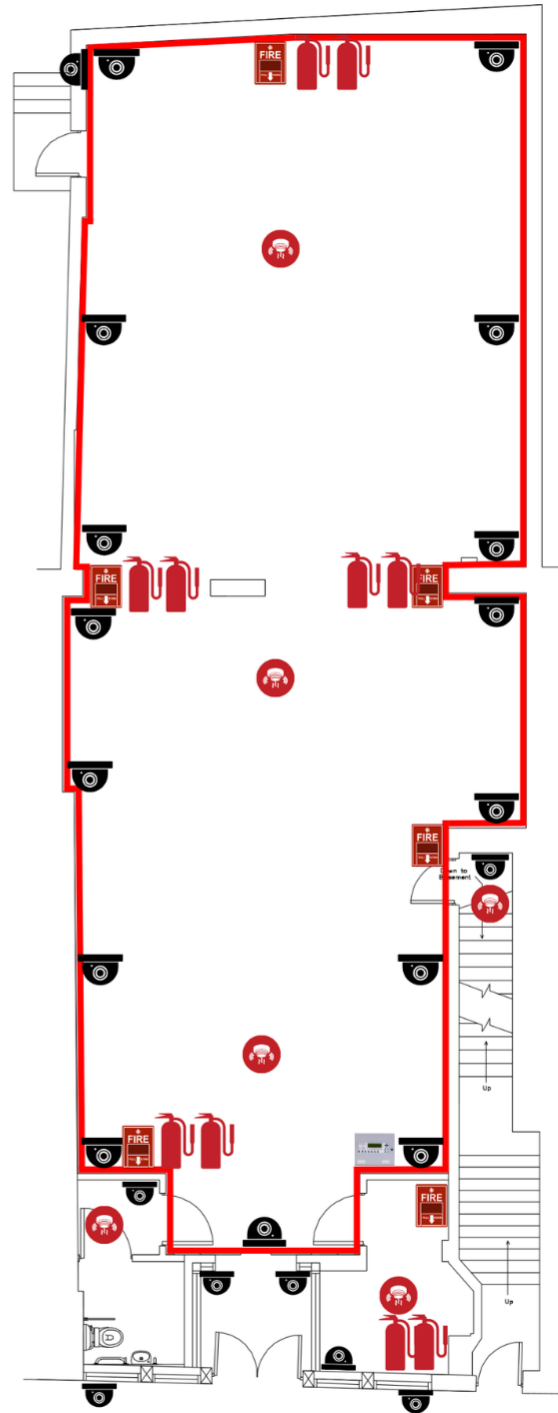
1. ALL WORK SHALL BE IN ACCORDANCE WITH THE REQUIREMENTS OF THE BUILDING REGULATIONS AND THE FIRE ALARM REGULATIONS AND THE REQUIREMENTS OF THE FIRE ALARM REGULATIONS AND THE REQUIREMENTS OF THE FIRE ALARM REGULATIONS.
2. ALL WORK SHALL BE IN ACCORDANCE WITH THE REQUIREMENTS OF THE BUILDING REGULATIONS AND THE FIRE ALARM REGULATIONS AND THE REQUIREMENTS OF THE FIRE ALARM REGULATIONS AND THE REQUIREMENTS OF THE FIRE ALARM REGULATIONS.
3. ALL WORK SHALL BE IN ACCORDANCE WITH THE REQUIREMENTS OF THE BUILDING REGULATIONS AND THE FIRE ALARM REGULATIONS AND THE REQUIREMENTS OF THE FIRE ALARM REGULATIONS AND THE REQUIREMENTS OF THE FIRE ALARM REGULATIONS.
4. ALL WORK SHALL BE IN ACCORDANCE WITH THE REQUIREMENTS OF THE BUILDING REGULATIONS AND THE FIRE ALARM REGULATIONS AND THE REQUIREMENTS OF THE FIRE ALARM REGULATIONS AND THE REQUIREMENTS OF THE FIRE ALARM REGULATIONS.
5. ALL WORK SHALL BE IN ACCORDANCE WITH THE REQUIREMENTS OF THE BUILDING REGULATIONS AND THE FIRE ALARM REGULATIONS AND THE REQUIREMENTS OF THE FIRE ALARM REGULATIONS AND THE REQUIREMENTS OF THE FIRE ALARM REGULATIONS.
6. ALL WORK SHALL BE IN ACCORDANCE WITH THE REQUIREMENTS OF THE BUILDING REGULATIONS AND THE FIRE ALARM REGULATIONS AND THE REQUIREMENTS OF THE FIRE ALARM REGULATIONS AND THE REQUIREMENTS OF THE FIRE ALARM REGULATIONS.
7. ALL WORK SHALL BE IN ACCORDANCE WITH THE REQUIREMENTS OF THE BUILDING REGULATIONS AND THE FIRE ALARM REGULATIONS AND THE REQUIREMENTS OF THE FIRE ALARM REGULATIONS AND THE REQUIREMENTS OF THE FIRE ALARM REGULATIONS.
8. ALL WORK SHALL BE IN ACCORDANCE WITH THE REQUIREMENTS OF THE BUILDING REGULATIONS AND THE FIRE ALARM REGULATIONS AND THE REQUIREMENTS OF THE FIRE ALARM REGULATIONS AND THE REQUIREMENTS OF THE FIRE ALARM REGULATIONS.
9. ALL WORK SHALL BE IN ACCORDANCE WITH THE REQUIREMENTS OF THE BUILDING REGULATIONS AND THE FIRE ALARM REGULATIONS AND THE REQUIREMENTS OF THE FIRE ALARM REGULATIONS AND THE REQUIREMENTS OF THE FIRE ALARM REGULATIONS.
10. ALL WORK SHALL BE IN ACCORDANCE WITH THE REQUIREMENTS OF THE BUILDING REGULATIONS AND THE FIRE ALARM REGULATIONS AND THE REQUIREMENTS OF THE FIRE ALARM REGULATIONS AND THE REQUIREMENTS OF THE FIRE ALARM REGULATIONS.



BASEMENT PLAN (1:50)



-  CCTV Camera
-  Fire Alarm Call Point
-  Smoke Detector
-  Fire Extinguisher
-  Fire Alarm Panel



GROUND FLOOR PLAN (1:50)

Drawing No. 1WimL/PL/RL/26/01		Address: 1 Walm Lane (Basement & Ground Floor) Willesden Green NW2 5SN	Description: Basement and Ground Floor Plan
Scale: 1:50	Paper: A1		
Issue Date: 03/02/2025			