

Tuesday 15 January 2013

Update for Brent Health Partnership Overview and Scrutiny Committee

Accident and emergency performance and activity at North West London Hospitals NHS Trust

1. Activity

1.1 Central Middlesex A&E

Activity at Central Middlesex Hospital A&E continues to decline although the department has been busy over the past six weeks. It remains a challenge to make the emergency department and acute medicine at CMH financially and clinically viable. The Trust will be looking at how, within the context of the possible outcome of Shaping a healthier future, the emergency pathway can be consolidated and improved.

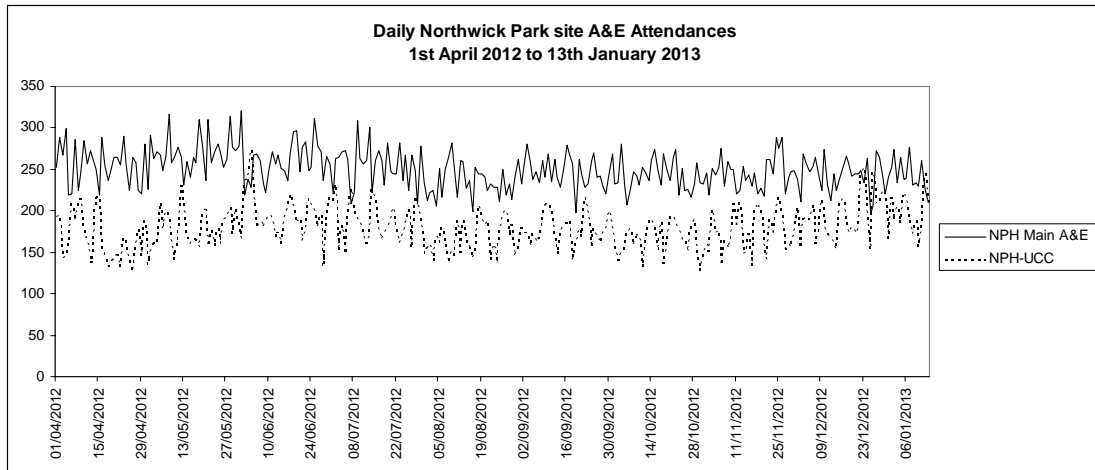
1.2 Northwick Park A&E

The A&E at Northwick Park Hospital cares for around 500 patients per day (about half of these are seen in the urgent care centre which is managed by Ealing Hospital NHS Trust - Integrated Care Organisation).

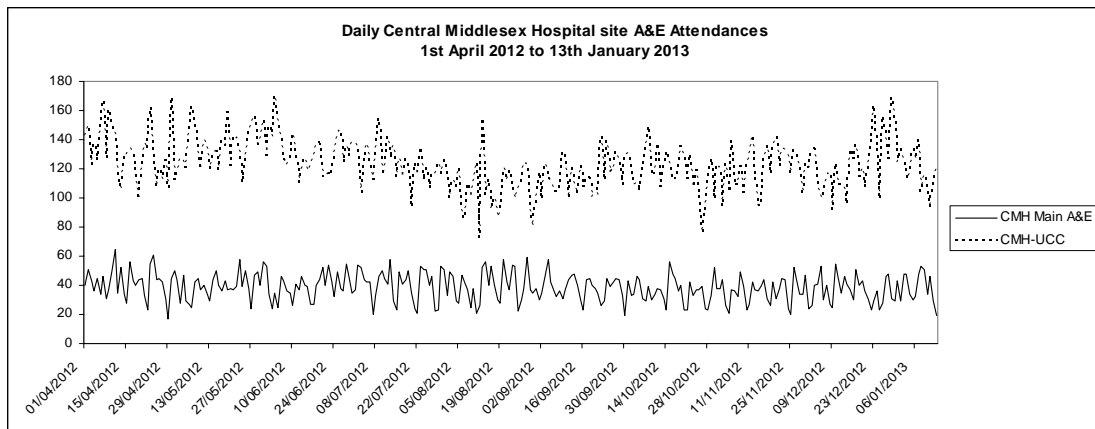
A major challenge, as previously discussed, is physical space within the department (e.g. assessment space) and bed capacity across the Trust. Nearly all of the current breaches of the four hour target (70%) are within the control of the Trust and are as a direct consequence of insufficient bed capacity.

The Trust will need to find additional assessment and acute bed capacity over the coming months to reduce waiting times within A&E and we are currently undertaking a complete site review to achieve this by ensuring that services are located on the correct site.

The graph below shows that the UCC activity at Northwick Park is increasing and seeing minor injuries and illness as well as having an agreed ambulance pathway. In line with this increase, the overall number of people attending A&E is decreasing. However it is important to note that the patients who are now seen have a higher acuity which means they have more complex needs and are more likely to be admitted.



The below graph shows that overall activity is declining at Central Middlesex A&E (includes A&E and some reduction in those attending UCC).



2. Performance

The national standard set for accident and emergency departments is that 95% of patients should spend no more than four hours in the department from time of arrival to time of departure.

As at 6th January 2013, the performance across the Trust (both main A&E Departments and Urgent Care Centres) for the period 1st April 2012 to date was 95.65%.

The daily performance across the Trust is shown below. Performance will fluctuate on a daily basis but the target is NOT a daily target.

A&E 4 Hour Performance Target

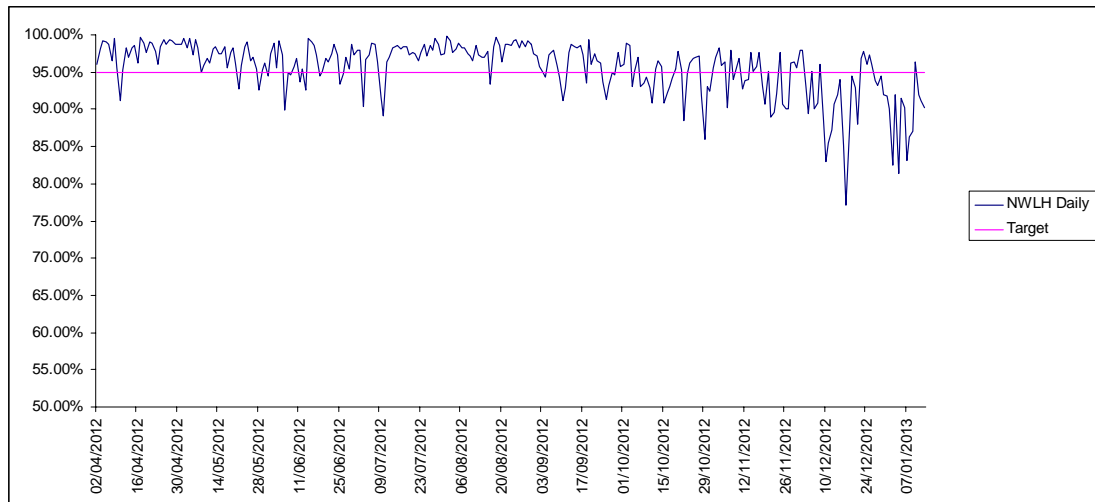
95.00%

A&E Performance	Yesterday	Week to Date	Year to Date
NPH- Type 1 Only	76.57%	73.71%	90.55%
CMH- Type 1 Only	93.75%	95.45%	97.05%

Trust- Type 1 Only	78.60%	76.57%	91.42%
NPH + UCC- Type 1 & 3	87.28%	84.70%	94.33%
CMH + UCC- Type 1 & 3	98.74%	98.77%	99.15%
Campus- Type 1 & 3	90.24%	88.43%	95.65%

You will note from the graph below that over the winter, as the need for admission has increased, performance against the target has deteriorated. This is due to the capacity challenge in regards to beds as described above.

Figure1. Daily performance across the Trust.



3. A&E redevelopment

The Trust is making good progress with its plans for a £20m redevelopment of the A&E at Northwick Park Hospital which will address some of the capacity issue with regards to assessment space within the department.

As plans, including artist's impressions, are finalised we would welcome the opportunity to present these in more detail to the Committee at a future meeting.

Tina Benson
Deputy Director of Operations
North West London Hospitals NHS Trust