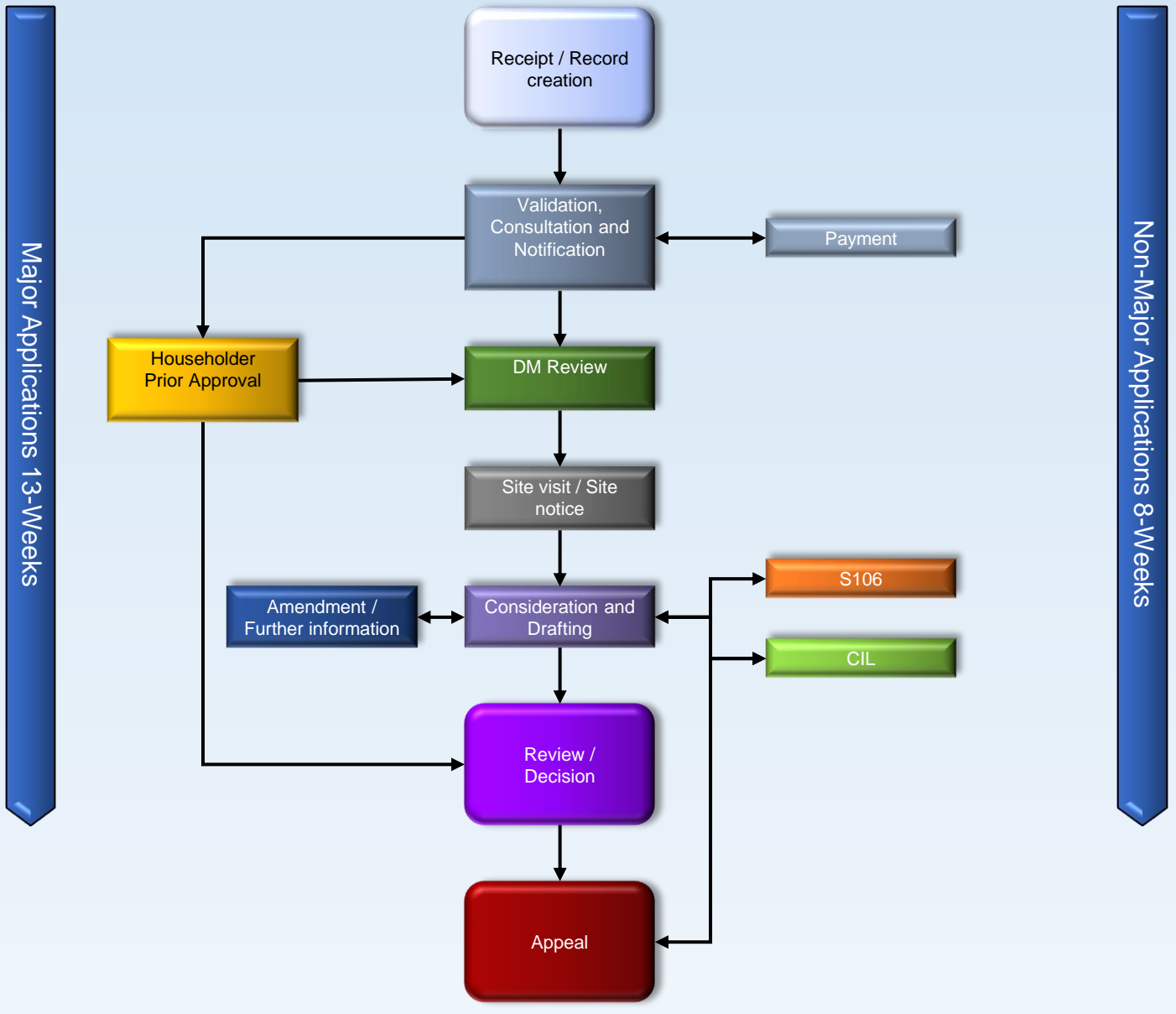
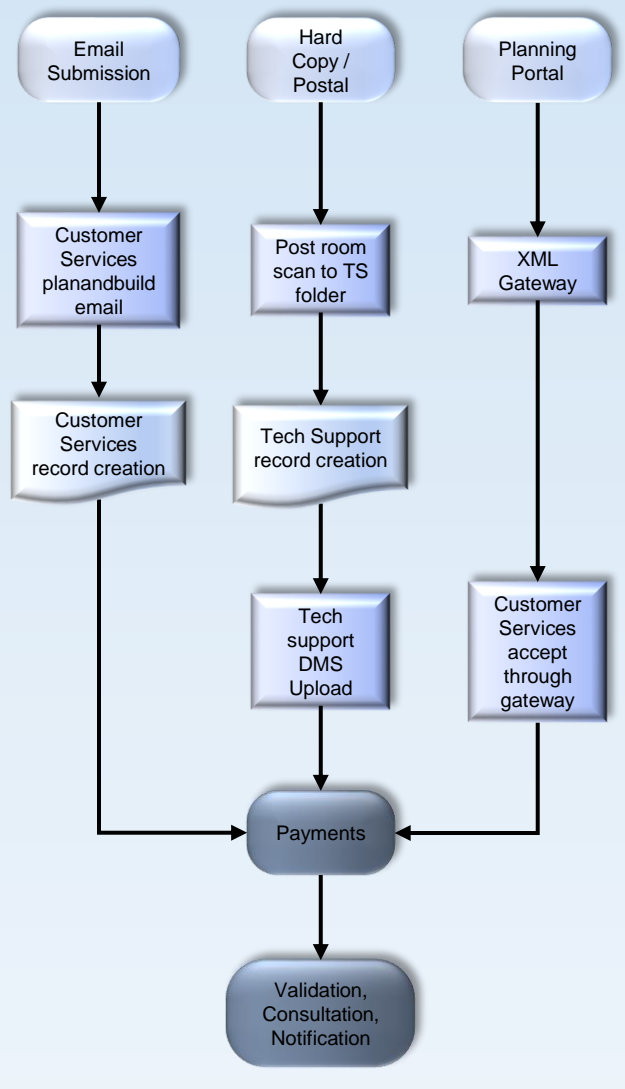


DM Process Overview



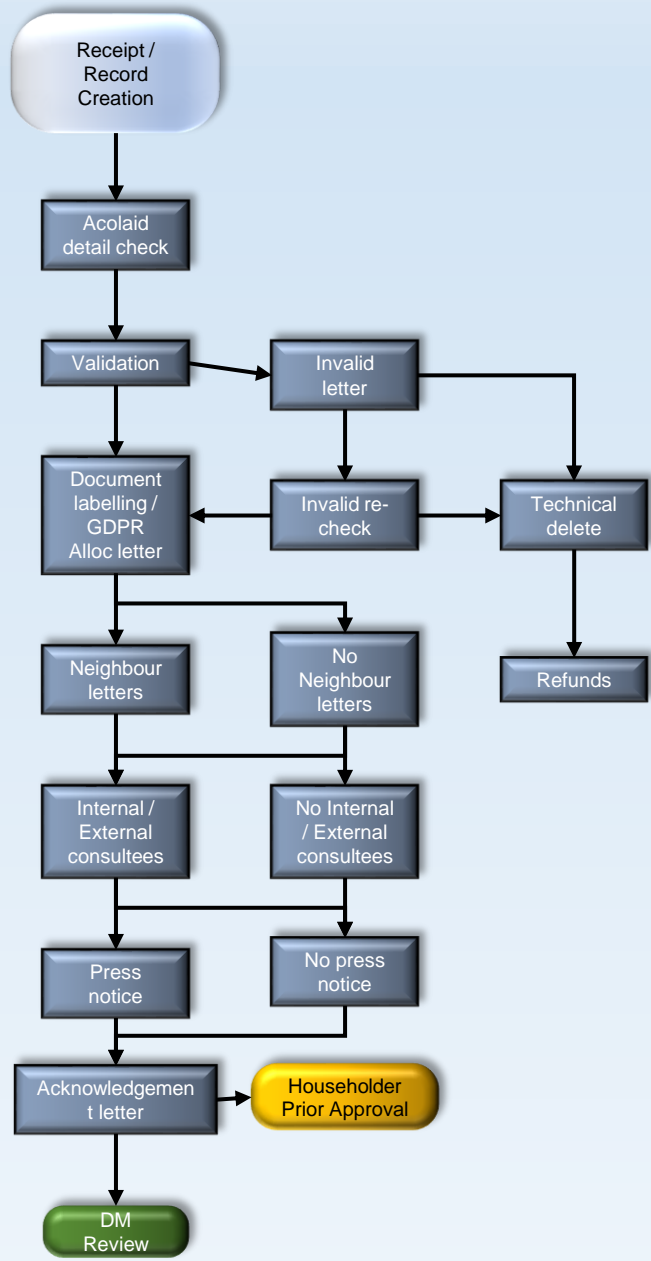
Receipt / Record Creation

Major Applications Week 1 / Non-Major Applications Week 1



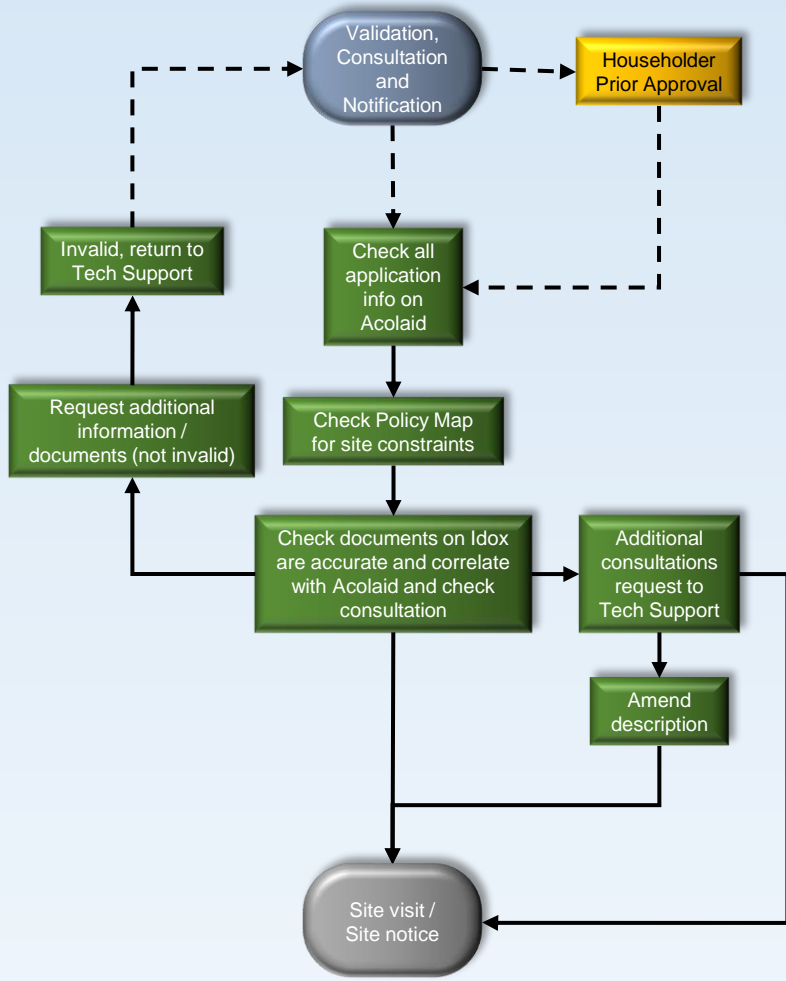
Validation, Consultation and Notification

Major Applications Week 1 / Non-Major Applications Week 1



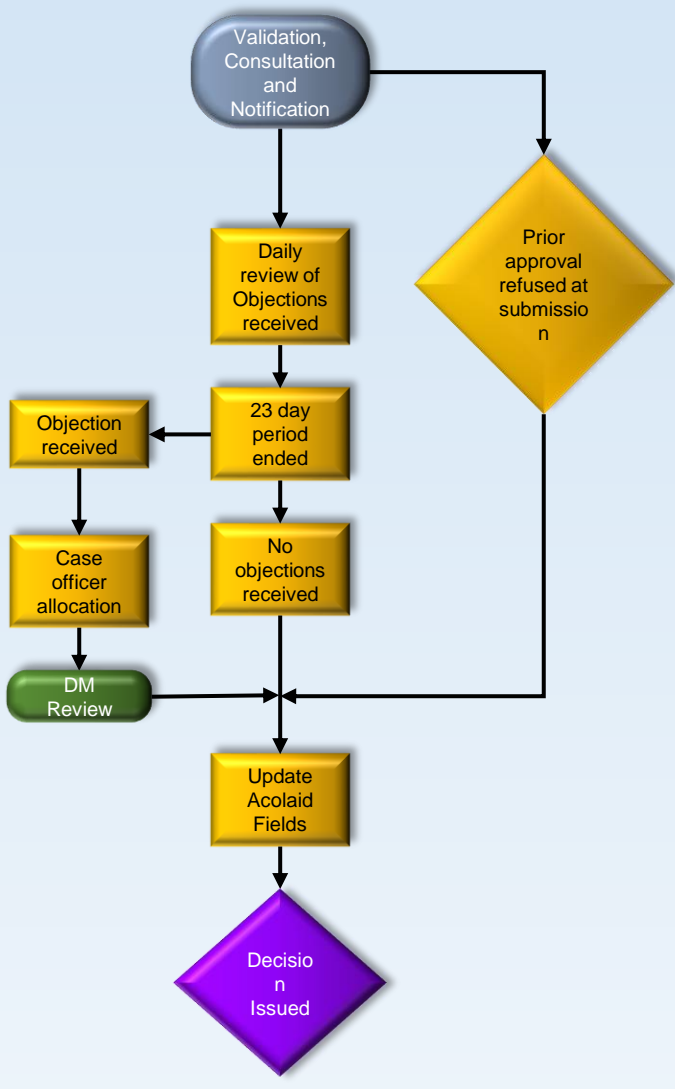
DM Review

Major Applications Week 2 / Non-Major Applications Week 2



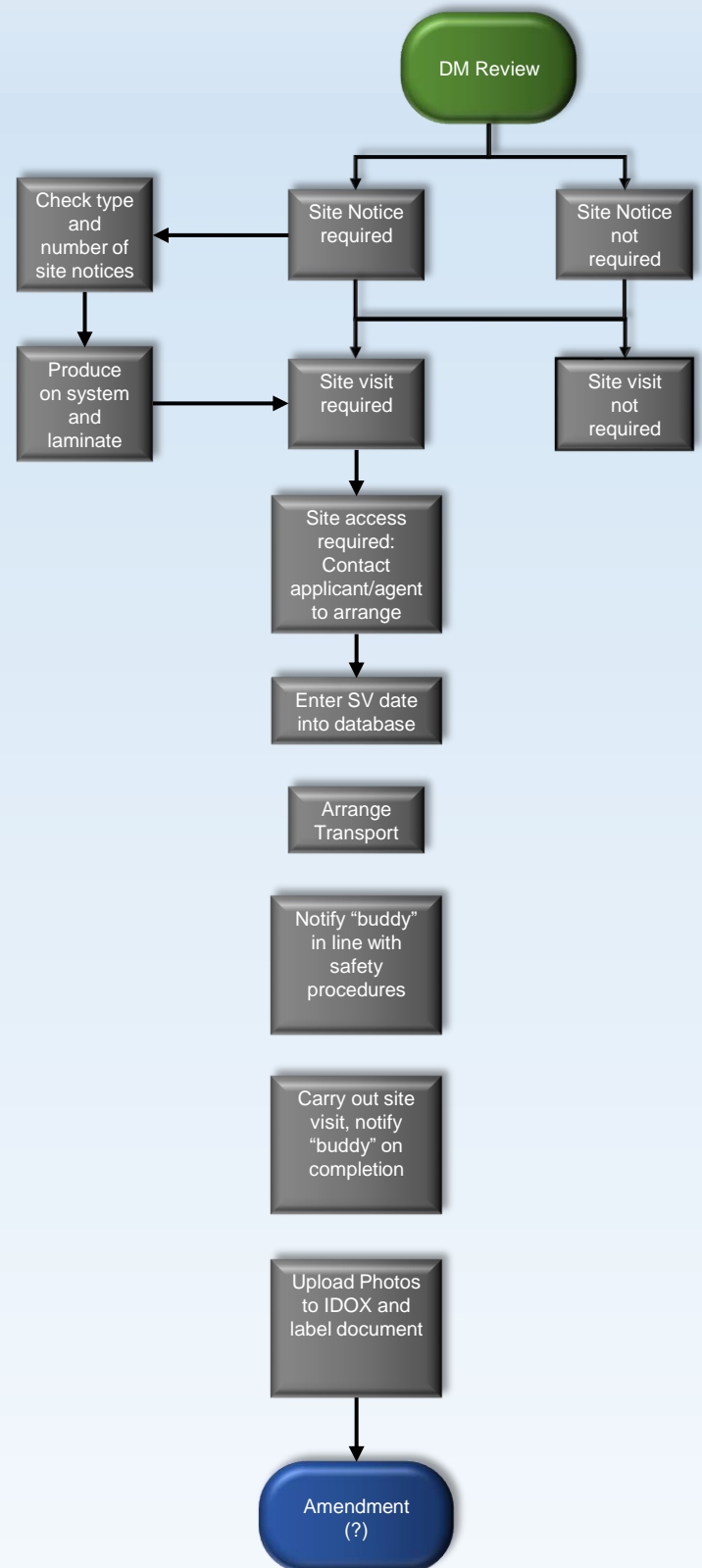
Householder Prior Approval

Non-Major Applications Weeks 2-7



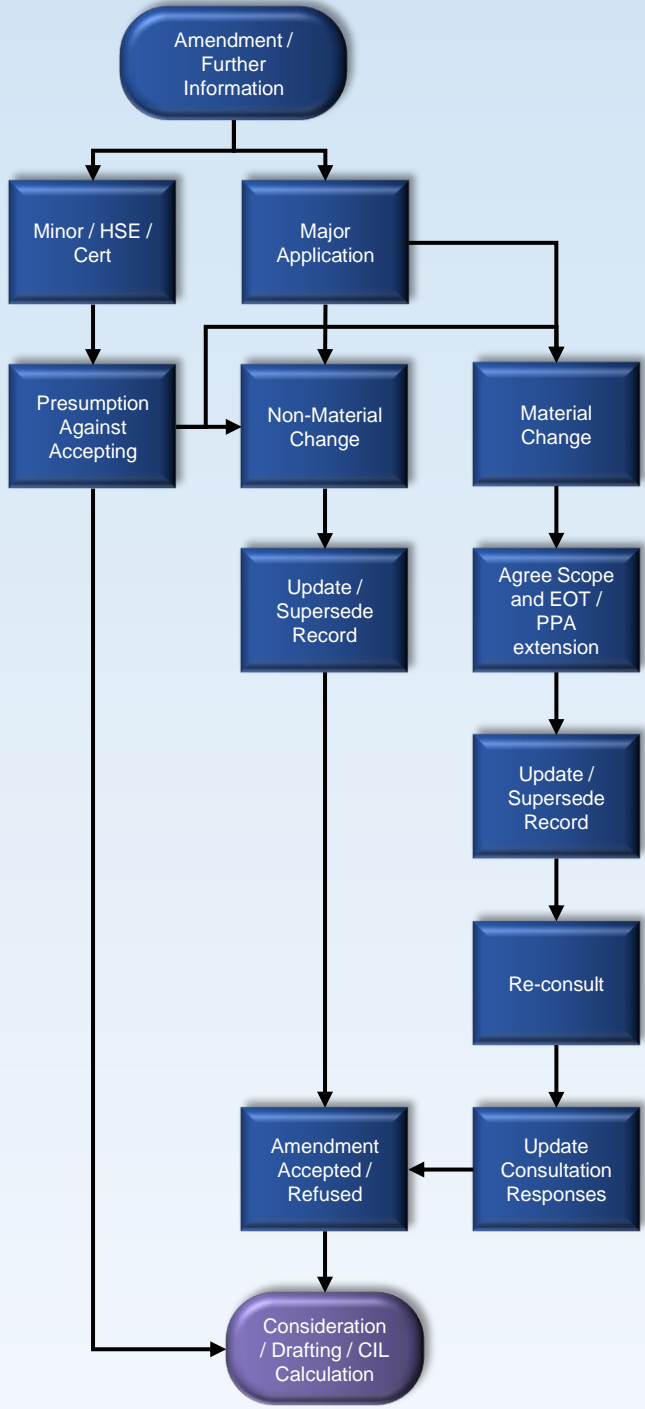
Site Visit / Site Notice

Major Applications Week 3 / Non-Major Applications Week 3



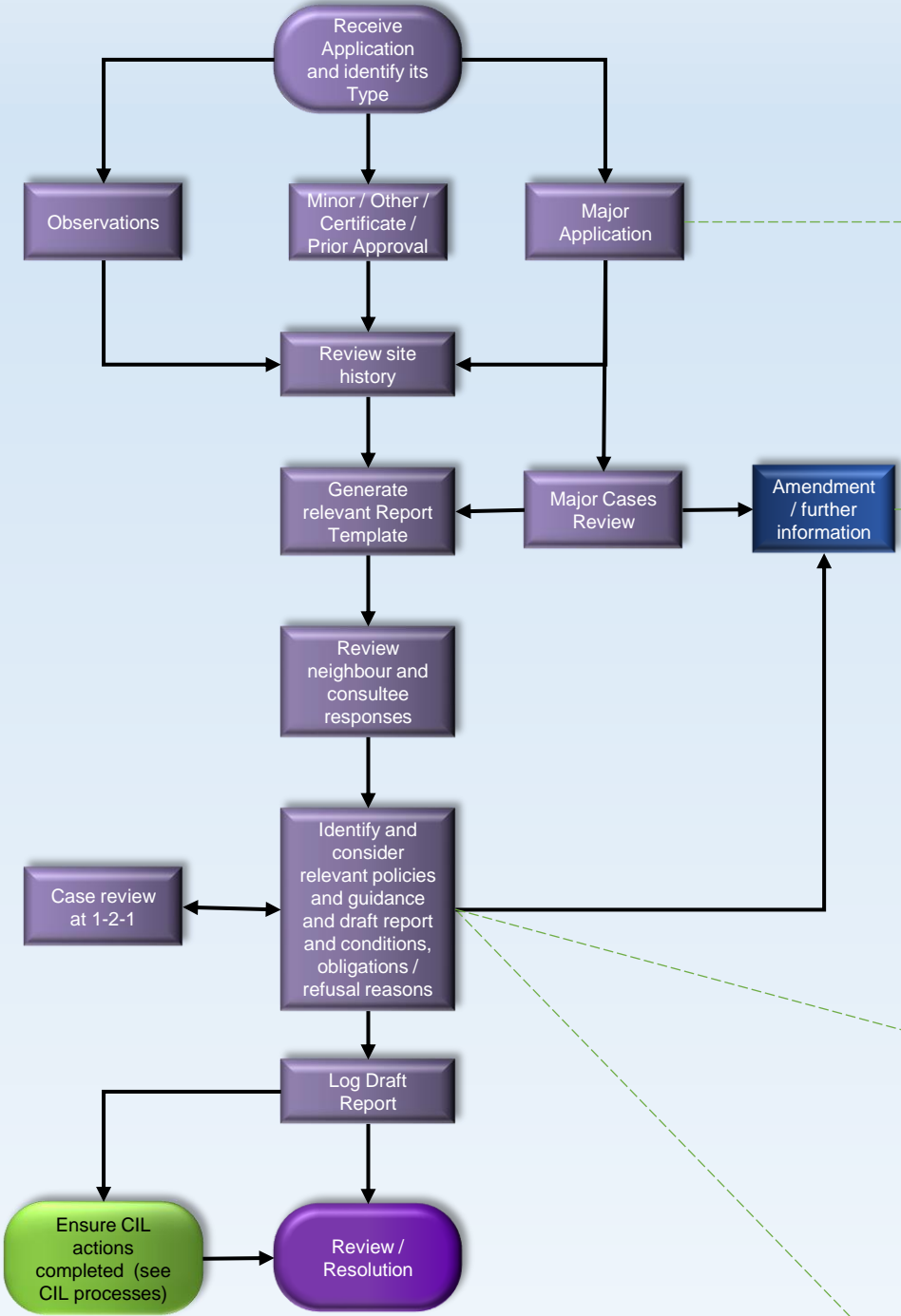
Amendment / Further Information

Major Applications Week 3 / Non-Major Applications Week 3



Consideration and Drafting

Major Applications Weeks 2-12 / Non-Major Applications Weeks 2-7



Check if referable to Mayor of London and if so, ensure application is referred within 1 week of receipt.
See: Town and Country Planning (Mayor of London) Order 2008
<https://www.legislation.gov.uk/uksi/2008/580/contents/made>

- Minor scheme – only seek amendments for minor changes that don't require re-consultation.
- Major schemes – ensure PPA extension / EoT in place if amendments would affect determination timeframes.

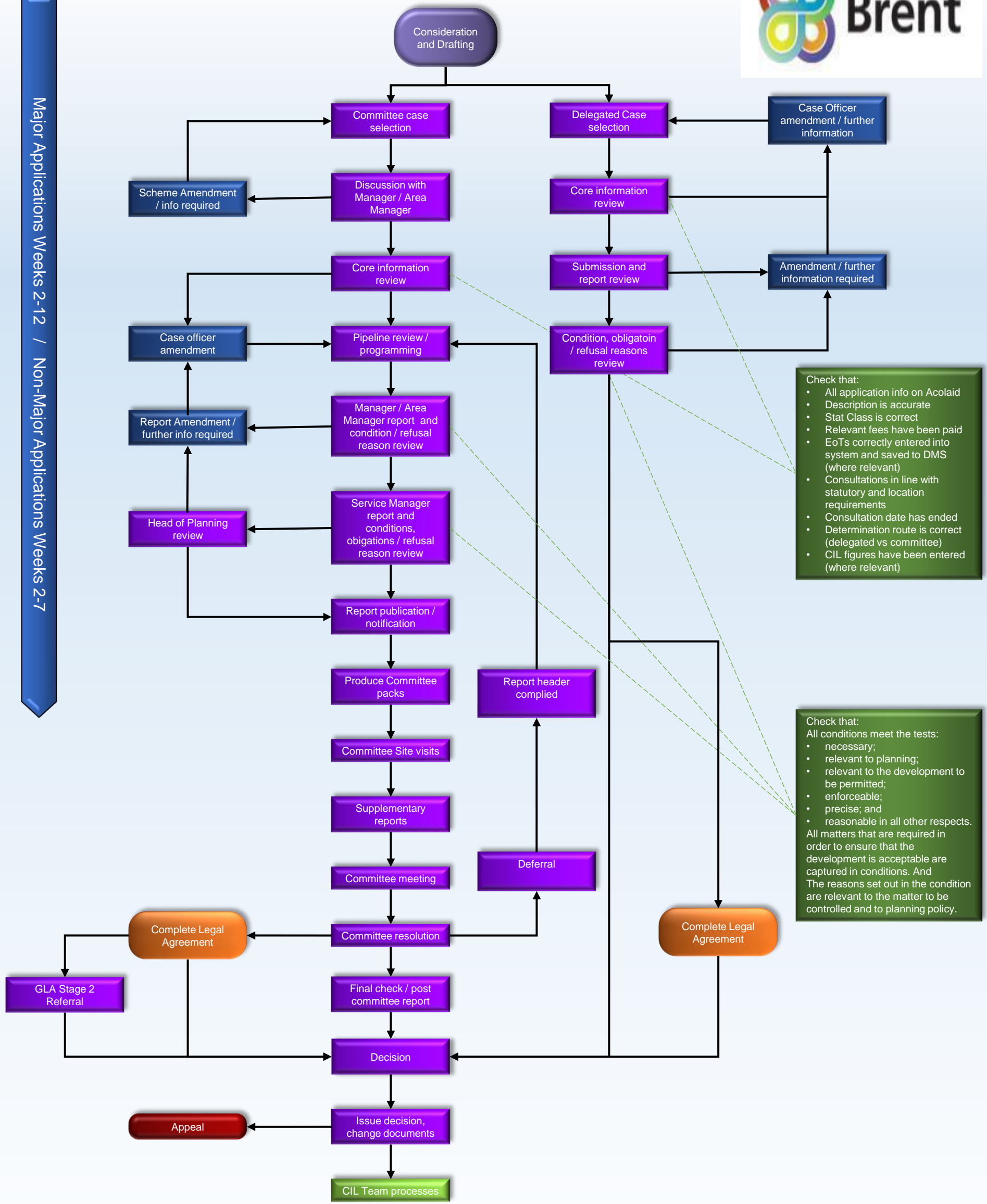
- Use relevant report template:
All conditions meet the tests:
- Certificate (by type)
 - Householder (fast-track)
 - Minor
 - Major
 - Observations
 - Prior approval:
 - Householder
 - Telecommunications
 - Part 20 (new dwellings)

- Check that:
All conditions meet the tests:
- necessary;
 - relevant to planning;
 - relevant to the development to be permitted;
 - enforceable;
 - precise; and
 - reasonable in all other respects.
- All matters that are required in order to ensure that the development is acceptable are captured in conditions; and
The reasons set out in the condition are relevant to the matter to be controlled and to planning policy.

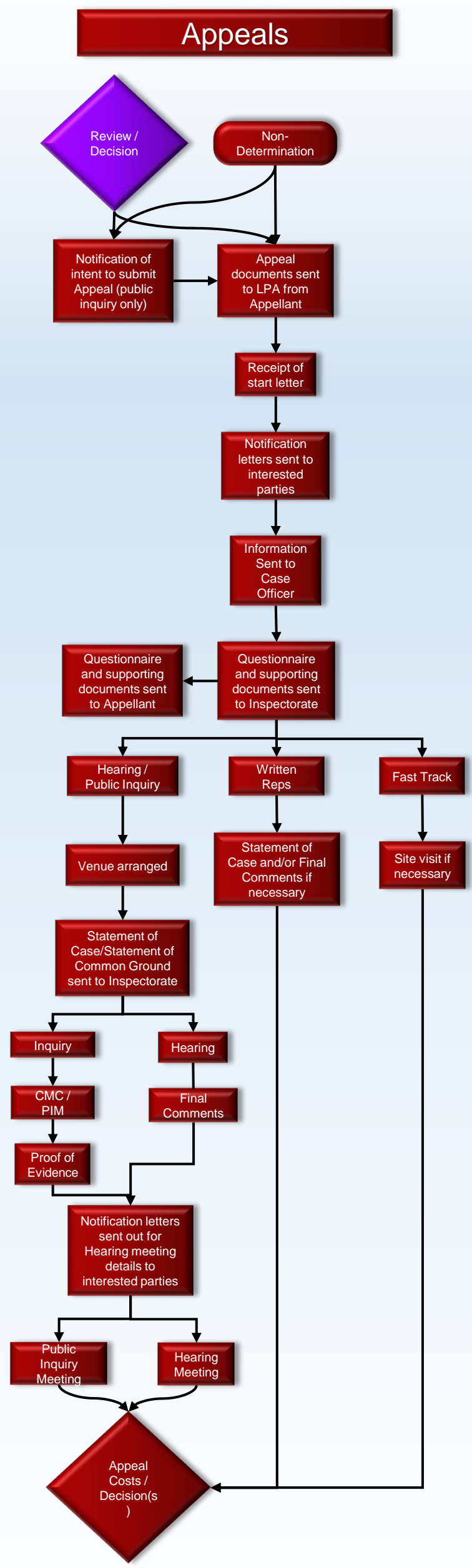
Review / Resolution / Decision



Major Applications Weeks 2-12 / Non-Major Applications Weeks 2-7

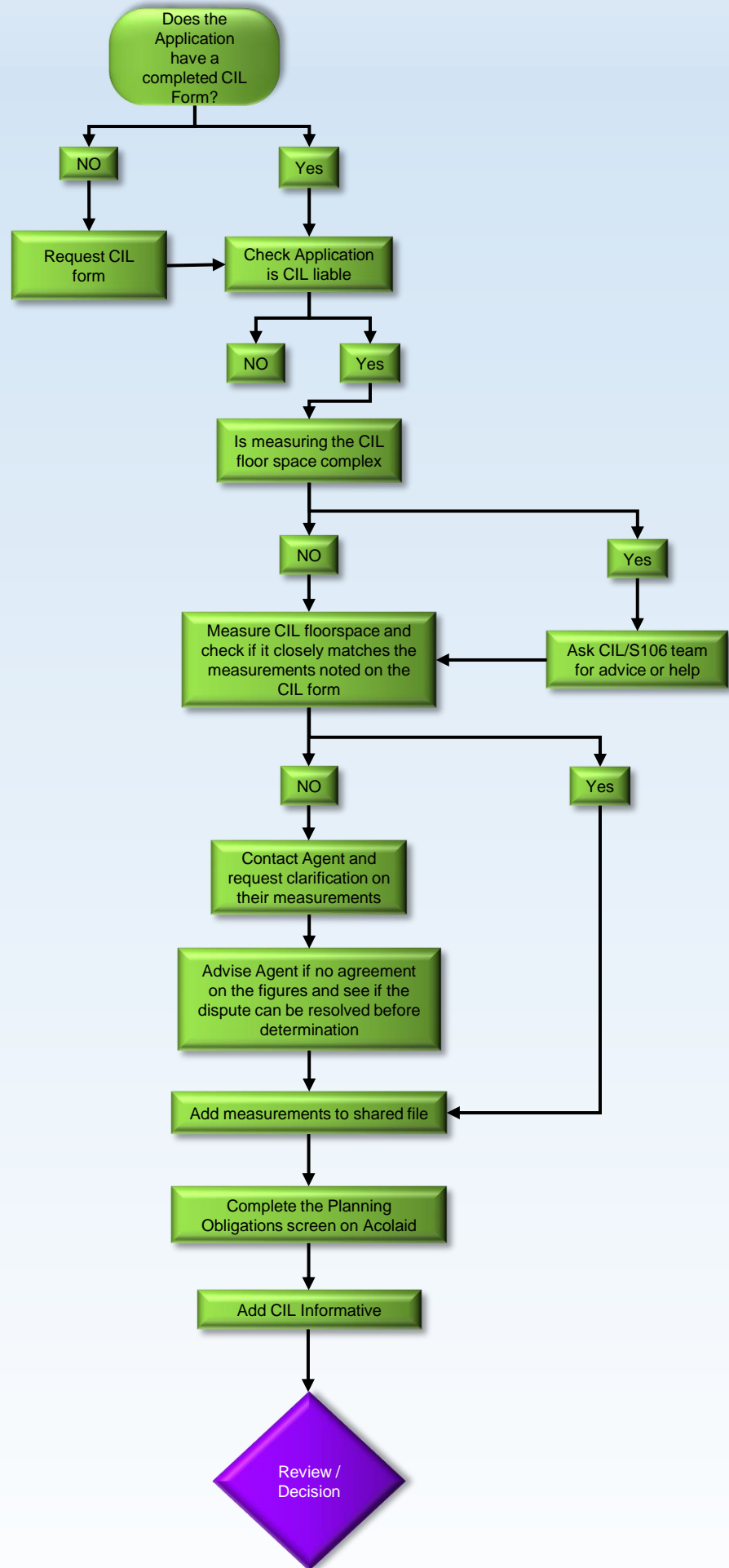


Major Applications Weeks 2-12 / Non-Major Applications Weeks 2-7



CIL

Major Applications Week 2-12 / Non-Major Applications Weeks 2-7



Major Applications Week 2-12 / Non-Major Applications Weeks 2-7

S106

