

Appendix 1 – The Under 5s Nursery Panel process and criteria

Beyond the free entitlements –the Under 5s Specialist Nursery Panel

Referral Process for a Specialist Nursery or Additional Funding through the Under 5's Specialist Nursery Panel

The Panel supports children;

- a. that attend an Additionally Resourced Provision (ARP) for children under five on the Autistic Spectrum (Horizon, Rainbow or Sunshine)
- b. children with special educational needs or a disability in Curzon/~~Fawood~~, Granville Plus Nursery School, Willow SEND Family Wellbeing Centre Nursery or an appropriate PVI or nursery class.
- c. ~~children~~ who are a Looked After Child, subject to a Child in Need or Child Protection plan or have No Recourse To Public Funds in Curzon/~~Fawood~~, Granville Plus Nursery School, Willow SEND Family Wellbeing Centre Nursery or an appropriate PVI.

Does the child have a Mosaic Number?

YES

NO

Email, Early Help Assessment (EHA), Initial Health Assessment (IHA) or referral form for those known to social care to Under 5's

Referrer to complete an EHA/IHA or referral form with essential information to outline reasons why child needs a supported nursery place or ARP

Complete the EHA via the online portal <https://www.brent.gov.uk/services-for-residents/children-and-family-support/early-help-and-support-available/getting-an-early-help-assessment/>

If you are submitting an IHA or referral form please send to the secure email address Family.Frontdoor@brent.gcsx.gov.uk

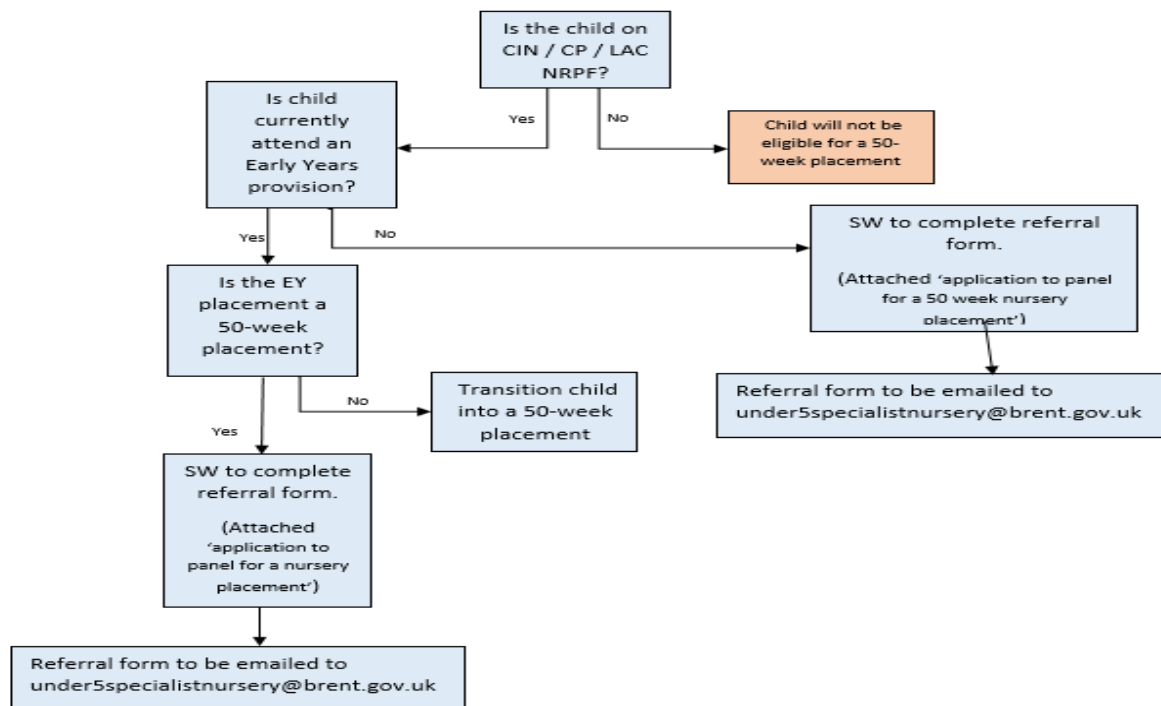
Subject line of email:

Under 5's Specialist Nursery Panel application

Criteria for CIN/CWD/LAC/NRPF funded nursery place (15 hours for 50 weeks of the year)

- Child currently attending a 50-week nursery or seeking a 50-week nursery placement.
- subject to a Child Protection (CP) or Child in Need (CIN) plan
- Brent Looked After child (LAC)
- part of a family whose parents have No Recourse to Public Funds (NRP)

Appendix 1 – The Under 5s Nursery Panel process and criteria



- Finding a nursery that is 50 weeks placement. First, look for Brent’s specialist nursery placements (Curzon Crescent, Fawood, Granville, Willow). *Please note that there needs to be exceptional reasons why a place at a specialist placement is not being requested.*
- If a placement is required at a nursery and not one of the specialist provisions listed above you must clearly state the reason for this in referral form.
- Any alternative PVI nursery is agreed with the Under 5’s Panel SW must confirm that is open 50 weeks and has been rated ‘good’ or ‘outstanding’ by Ofsted.
- Funding covers 15 hours a week across a 50-week year. This is to ensure a protective environment and consistent monitoring within the setting.
- Managers of EY setting to be notified by Social Worker of this support on joining a nursery.
- SW should contact Early Years Inclusion Support Team (EYIST). EYIST linked to and support every Brent nursery and childminder setting. – **All contact details in attached EYIST leaflet.**
- Child under CIN / CP / LAC are likely to need support with Social, Emotional, Mental, Health needs (SEMH) EYIST team to support setting.
- Please ensure that all referrals are received by 4pm on the 1st Wednesday of every month. The panel is held on the 2nd Monday of each month (unless stated otherwise on the Under 5’s email auto response message). The referrer and the parent/carer will be informed within 2 weeks of panel meeting.
- If a child is currently attending a setting that is not 50 weeks a request for wrap around care to cover holidays at a childminder/50-week nursery maybe be considered.

Appendix 1 – The Under 5s Nursery Panel process and criteria

➤ Brent Under 5s panel bandings**Band 5 (£8 per hour)****Fund A**

For 2-, 3- & 4-year-olds: Criteria for CwD funded nursery place at a Specialist Nursery (15 hours x 38 weeks of the year)

- With SLD /ASD and/or other known syndromes (e.g., Downs, Fragile X) with some challenging behaviour and the capacity for making small progress, who may have challenging behaviour particularly around non-compliance and inability to cope in a range of environment.
- With extreme physical; medical; sensory; and/or emotional needs who demonstrate the potential for making small amounts of progress in accessing some aspects of the curriculum and/or self-regulating their behaviour.
- A combination of learning difficulties, speech and language delay and social deficits (with or without a diagnosed autistic spectrum disorder) **and** with associated **multiple** problems in the range of attention, communication, empathy, emotional control, attachment, anxiety, or depression associated behaviour that is either harmful to others or harmful to self or that prevents participation (such as extreme avoidance or withdrawal)
- Pupils with dual sensory impairment with moderate loss in both or most affected modality

Fund B

For 3-4 year olds or 2 year olds in exceptional circumstances: Criteria for CwD funded nursery place at a PVI, childminder or school nursery rated good or outstanding by Ofsted (15 hours x 38 weeks of the year)

- As for the Specialist Nurseries (above) but with no significant medical needs or without the need for specialist equipment

Band 3 (£5 per hour)**Fund C**

For 3–4-year-olds: Proposed criteria for one off funding to purchase a piece of equipment or specific SEND training for staff for those children with lower-level needs relating to band 3 criteria below (15 hours x 38 weeks of the year).

- They may on occasions/possibly regularly but not too frequently, require some low-level additional supervision and intervention from others. They are likely to respond positively to routine, structure, and support.
- display persistent low-level disruption (frequent inappropriate interruptions) and occasionally exhibiting anti-social behaviour which may include for example: having frequent (at least daily or very long) temper tantrums, with screaming, kicking or a complete loss of control.
- Experiences moderate level of hearing impairment and/or visual or perceptual impairment as described by specialist staff.