

# BRENT COUNCIL

## INFRASTRUCTURE FUNDING STATEMENT 2021/22



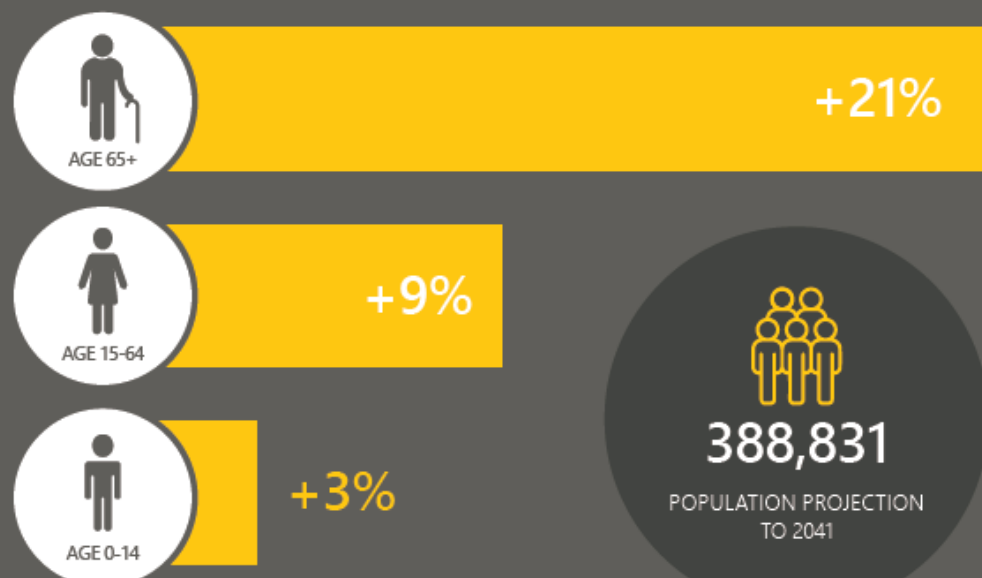
# BOROUGH PROFILE



POPULATION OF  
BRENT **339,800**

A RISE OF **9%**  
SINCE 2011  
CENSUS

## CHANGE BY AGE 2011-21



**20,000**  
CHILDREN AGED 0-4  
▼ **11%**  
2011-21

**40,700**  
CHILDREN AGED 5-14  
▲ **11%**  
2011-21



**5th largest** London  
borough by population



**118,600** number of  
households - 8% increase  
since 2011



Population density **7,859**  
people per square kilometre.  
14th highest density in  
London



**24**

UNDERGROUND/  
OVERGROUND STATIONS



**2**

NATIONAL RAIL STATIONS



**18**

OUTSTANDING SCHOOLS



**100**

PARKS INCLUDING  
RECREATION AND SPORTS  
GROUNDS

# 1 Introduction

- 1.1 Brent is the 6<sup>th</sup> largest borough in London by area, with a population of 339,800, the 5<sup>th</sup> largest population in London. It is projected to grow by at least 17% and reach 400,000 people by 2040.
- 1.2 The Brent Local Plan outlines an ambitious strategy to accommodate development in the borough to 2041. To support this growth, significant investment in infrastructure will be required.
- 1.3 An Infrastructure Delivery Plan (IDP) supports the Local Plan. It sets out short, medium and longer-term infrastructure requirements to address growth needs. The IDP will be used to support the allocation of Community Infrastructure (CIL) and Section 106 (s106) funding.

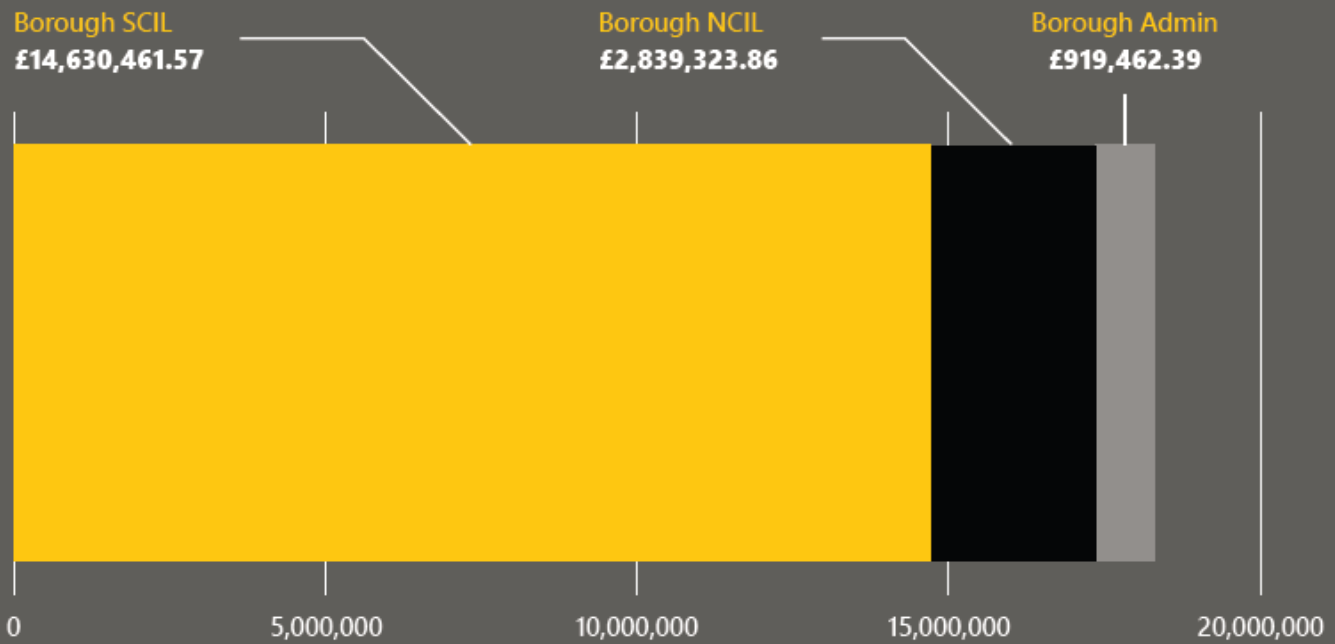
## **The Infrastructure Funding Statement**

- 1.4 In September 2019 changes to the CIL Regulations came into effect which included a requirement for local planning authorities to publish an Annual Infrastructure Funding Statement – the first of which was published online in December 2020 – outlining how much CIL and s106 income it has received for the previous year, what the income has been spent on and future spending priorities. The statement must be published each year by 31st December.
- 1.5 This is the Council's third Annual Infrastructure Funding Statement (IFS) and it covers the previous financial year 2021/22. It has been prepared in line with the Community Infrastructure Levy (Amendment) Regulations 2019 and covers income and expenditure relating to CIL, S106 obligations and s278 highways agreements for the financial year 2021/22. It also, where possible, sets out future spending priorities on infrastructure in line with the growth identified in the Brent Local Plan, Borough Plan, Capital Pipeline and Long Term Transport Strategy.
- 1.6 The IFS is a statement of spend as required by the regulations and not a statement on the allocation process of CIL and S106.
- 1.7 The Council uses s106 obligations and CIL to support development and mitigate its impacts and maximise the benefits and opportunities from growth to deliver the priorities of the Borough Plan (the Council's Corporate Plan) and the Brent Local Plan.
- 1.8 CIL is allocated within the Council's Capital Programme governance arrangements. The programme has regard to the corporate strategies listed in the Borough Plan, Black Community Action Plan, Poverty Commission Action Plan, Inclusive Growth Strategy, Climate & Ecological Emergency Strategy and Long Term Transport Strategy. The Capital Pipeline, Local Plan and IDP are intrinsically linked to this with any project seeking a CIL allocation required to go to the Capital Programme Board. Any project seeking a CIL allocation of more than £500,000 is then required to go to Cabinet for final approval.
- 1.9 The IFS sets out what infrastructure has been delivered to date via CIL and S106 planning obligations, as well as identifying, where it is able to do so, future infrastructure spending priorities.

- 1.10 The IFS will also help communities understand how the level of growth outlined in the Local Plan can deliver tangible outcomes and investment in infrastructure projects such as new public realm, health facilities, schools, transport and open space that will support long-term growth and development of the borough.

# COMMUNITY INFRASTRUCTURE LEVY

## CIL COLLECTION BREAKDOWN



**£18,389,247.82**

Total amount of Borough CIL collected in 2021-22

**£8,930,979.00**

Total amount of SCIL spent in 2021-22

**£4,505,237.36**

Total amount of NCIL spent in 2021-22

## ALLOCATIONS IN 2021-22 | PROJECTS APPROVED FOR FUNDING

**Strategic CIL**

**£4,900,000.00**

Allocated to NWCC Infrastructure and Public Realm

**Neighbourhood CIL**

**£3,007,668.18**

Allocated across 67 NCIL projects

## 2 Community Infrastructure Levy (CIL)

- 2.1 The Council has been collecting the borough's Community Infrastructure Levy (CIL) since July 2013.
- 2.2 CIL receipts can be broken down into three distinctive portions – the Strategic CIL (SCIL), the Neighbourhood CIL (NCIL) and the Administration CIL. A Mayoral CIL (MCIL) is also collected. This is passed on to TfL on a quarterly basis and will be used to fund Crossrail 1 (the Elizabeth Line) and Crossrail 2.

**Table 1: CIL Portions Description**

Portion	% of receipts	Process
Brent Strategic CIL	70% plus	Spend decided by the Council according to its strategic infrastructure priorities. Spend must support development in Brent, although does not have to be spent by Brent
Neighbourhood CIL	15% to neighbourhoods or 25% where a neighbourhood plan is in place	A round of bids inviting communities to suggest projects for NCIL funding
CIL Administrative expenses portion	Up to 5%	Spend applied to administrative expenses for collection and enforcement in line with legal restrictions on the use of this funding
Mayoral CIL Administrative expenses portion	Up to 4% of MCIL received	

- 2.3 Strategic CIL must be used to fund the improvement or replacement of infrastructure (e.g. education, transport facilities, medical facilities, schools, sporting and open space/recreation facilities) that supports growth in the borough. Whilst it cannot be used to resolve pre-existing deficiencies, it can secure improvements to existing infrastructure if it is shown to that this supports development and this request is eligible for CIL funding in line with CIL regulations.
- 2.4 CIL is a tool for local planning authorities to help deliver infrastructure to support the development of their area. The IFS is an annual requirement that reports to the Government, among other things, how the CIL has been spent in line with the regulations. Reporting on CIL in this way helps communities and developers see how contributions have been spent ensuring a transparent and accountable system.
- 2.5 The tables below outline how the Council has performed in terms of Brent CIL receipts and expenditure for the reporting year - **2021/22** in line with Regulation 121. Brent CIL is made up of Strategic CIL (SCIL), Neighbourhood CIL (NCIL) and CIL Admin.



**Table 2: Brent CIL receipts for 2021/22**

<b>Infrastructure item</b>	<b>Brent CIL receipts</b>
The total value of CIL set out in all demand notices (sent to those who have provided a commencement date to pay CIL) issued in 2021/22. These may not all be paid in the same financial year	£29,681,100.33
The total amount of CIL receipts collected in 2021/22	SCIL: £14,630,461.57 NCIL: £2,839,323.86 CIL Admin: £919,462.39 <b>Total: £18,389,247.82</b>
The total amount of CIL (SCIL and NCIL only) receipts, collected by the authority in the years prior to 2021/22, but which have not been allocated prior to 2021/22	£60,241,986.97
The total amount of CIL (SCIL and NCIL only) receipts collected by the authority, or by another person on its behalf in the years prior to 2021/22, which have been allocated in 2021/22	SCIL: £4,900,000.00 NCIL: £3,007,668.18 <b>Total: £7,907,668.18</b>
The total amount of CIL expenditure in 2021/22 (includes SCIL & NCIL spend only)	SCIL: £7,058,222 NCIL: £4,575,043.36 <b>Total: £11,633,265.36</b>
The amount of CIL spent on administrative expenses pursuant to regulation 61	Brent Admin: £681,441.30
The percentage of CIL received in 2021/22 spent on administrative expenses pursuant to regulation 61	3.7%
The amount of CIL spent on repaying money borrowed, including any interest, with details of the items of infrastructure which that money was used to provide (wholly or in part)	Not applicable
Unused CIL Admin transferred to SCIL	£237,631.10

2.6 The breakdown of the total CIL collected by Brent in 2021/22 is set out below:

**Table 3: Total Brent CIL collected 2021/22**

<b>CIL Type</b>	<b>Total Receipts</b>
Total SCIL Collected for Brent in 2021/22	£14,630,461.57
Total NCIL Collected for Brent in 2021/22	£2,839,323.86
Total Brent Admin Collected for Brent in 2021/22	£919,462.39
<b>Total CIL Collected for Brent in 2021/22</b>	<b>£18,389,247.82</b>

2.7 Mayoral CIL returns for 2021/22 are shown below.

**Table 4: Total Mayoral CIL collected 2021/22**

<b>Mayoral 21/22</b>	<b>Mayoral</b>	<b>Admin (4%)</b>	<b>Total</b>
Q1 Apr- June 2021	£691,784.78	£28,824.37	£720,609.15
Q2 Jul-Sep 2021	£383,413.39	£15,975.56	£399,388.95
Q3 Oct- Dec 2021	£1,724,017.32	£71,834.05	£1,795,851.37
Q4 Jan -Mar 2022	£1,711,197.19	£71,299.88	£1,782,497.07
<b>Totals:</b>	<b>£4,510,412.68</b>	<b>£187,933.86</b>	<b>£4,698,346.54</b>

- 2.8 The financial year 2021/22 includes a period of the COVID-19 pandemic. During the early stages of the first lockdown the Council allowed developers in financial difficulty because of COVID-19 to apply to defer their CIL payments by 6 months. On 22<sup>nd</sup> July 2020, changes to the CIL regulations came into effect which allowed small and medium sized developers with an annual turnover not exceeding £45 million to apply for a CIL payment deferral. This regulation was in place for any development due to commence before 31<sup>st</sup> July 2021.
- 2.9 In 2021/22, 5 developments were granted COVID deferrals, these developments are listed in Appendix 1. Table 5 below lists the amount of Brent CIL COVID deferral that was granted and paid in 2021/22. The deferrals paid will include deferrals from 2020/21 which were carried into 2021/22.

**Table 5: Total CIL deferrals granted in 2021/22**

CIL Type	Total Deferrals Carried Forward from 20/21	Total Deferrals Granted 21/22	Total Deferrals Paid 21/22
SCIL	£2,652,257.58	£381,904.50	£2,842,272.08
NCIL	£497,298.30	£71,607.09	£532,926.01
Brent Admin	165,766.10	£23,869.03	£177,642.00
MCIL Admin	£27,077.04	£3,818.10	£28,974.26
<b>Total Deferrals &amp; Payments for Brent CIL 21/22</b>	<b>£3,342,399.02</b>	<b>£481,198.72</b>	<b>£3,581,814.35</b>
MCIL	£649,848.93	£91,634.51	£695,382.33
<b>Total Deferrals &amp; Payments for Brent &amp; Mayoral CIL 21/22</b>	<b>£3,992,247.95</b>	<b>£572,833.23</b>	<b>£4,277,196.68</b>

- 2.10 In 2021/22 the following infrastructure item was allocated Strategic CIL funding:

**Table 6: SCIL allocations in 2021/22**

Infrastructure project	SCIL Allocation	Ward
Neville House, Winterleys Court, Carlton House and Carlton Hall (NWCC) Infrastructure and Public Realm Works	£4,900,000.00	Kilburn
<b>Total SCIL allocated</b>	<b>£4,900,000.00</b>	

- 2.11 **Neville House, Winterleys Court, Carlton House and Carlton Hall (NWCC) Infrastructure and Public Realm** - The NWCC scheme has been designed by award winning architects Pollard Thomas Edwards with an extensive and inclusive consultation process with existing residents and wider stakeholders. It will comprise of 219 new high-quality homes, including 112 new high-quality homes for existing tenants of South Kilburn at an affordable social rent, new enhanced public realm (including Highway improvements to Neville Road) and enhanced landscaping.
- 2.12 The Council is committed to delivering an accessible and varied range of social value and employment initiatives for local residents as part of each development. Pollard Thomas Edwards is also committed to working in partnership with Brent to make



opportunities available to local people through social value initiatives and employment and training opportunities.

- 2.13 Examples of the items that are to be covered by the SCIL contribution include Public Realm initiatives, children’s play equipment, and landscaping and planting and the installation of Electric Vehicle Charging Points (EVCPs).



CGI of the proposed NWCC Scheme (Source: LBB)

- 2.14 In 2021/22 SCIL was spent on the following infrastructure items:

**Table 7: SCIL expenditure in 2021/22**

Infrastructure project	SCIL Expenditure	Ward
Olympic Way Public Realm Improvements	£5,909,654.00	Tokyngton
North End Road (Wembley Transport Improvements)	£1,148,568	Tokyngton
<b>Total SCIL expenditure</b>	<b>£7,058,222.00</b>	

- 2.15 **Wembley North End Road** - As identified in the Core Strategy and Wembley Area Action Plan, there is the need for new road connections and junction improvements to support the ongoing development of the Wembley Growth area. This includes significant road improvement schemes which have been implemented to improve traffic flow and connectivity through the area.
- 2.16 The new North End Road connector to Bridge Road opened on 11th June 2021 ahead of the EURO 2020 tournament initially operating as a T junction. The Highways and Infrastructure Team are working with TfL on signalling the new junction by the end of the year.
- 2.17 **Olympic Way Public Realm Improvements** – The improvements are a recognition that Wembley Park is an area of national and international importance. The high

quality public realm supports the ongoing transformation of the area into a thriving, attractive environment where people want to live with access to shops and entertainment.

- 2.18 Public and private investment for Olympic Way has involved a new treatment to the Bobby Moore Bridge, new hard and soft landscaping throughout, a new crossing at Fulton Road, new lighting, trees, street furniture, wayfinding, WIFI, a new public square, and replacement of the 'pedway' with steps, lifts and flexible covered space to form an iconic new entrance to the national stadium.



Wembley Way with the new Olympic Steps (Source: LBB)

**Table 8: SCIL and NCIL position at the end of 2021/22**

CIL Type	Total Unallocated	Total Allocated	Total Unspent*
SCIL	£59,331,790.86	£42,222,000.00	<b>£101,553,790.86</b>
NCIL	£6,380,849.05	£5,272,390.45	<b>£11,653,239.50</b>

SCIL (summary)	Totals
SCIL unspent* receipts retained at the end of 2021/22	<b>£101,553,790.86</b>
SCIL unspent* receipts retained at the end of 20/21 and carried forward into 21/22	<b>£95,121,362.66</b>

Neighbourhood CIL (summary)	Totals
NCIL unspent* receipts retained at the end of 2021/22	<b>£11,653,239.50</b>
NCIL unspent* receipts retained at the end of 2020/21 and carried forward into 2021/22	<b>£13,240,015.44</b>

*\*Unspent is money which is yet to be allocated along with money that has been allocated and has yet to be drawn down by the projects to which it is allocated*

### Future Spending Priorities

- 2.19 The Brent Local Plan outlines proposals to accommodate development in the borough to 2041. Over this time, the borough will continue to see a significant increase in its population, similar to levels seen over the last 20 years. This will require a substantial amount of new homes, jobs and associated physical and social infrastructure.

- 2.20 To support this, a programme of capital expenditure, and Strategic CIL will be used to fund, in part or full, some of these items, which are outlined in the Infrastructure Delivery Plan (IDP) and which meet Borough priorities.
- 2.21 The Council will continue to focus the spending of CIL and s106 receipts on essential infrastructure to support the level of growth outlined in the Local Plan and the projects identified in the IDP. It will do this jointly with partners through effective and ongoing engagement ensuring key infrastructure is delivered at the right time and in the right place to support growth and development.
- 2.22 SCIL funds have matured over a number of years; prudent financial practice and good future infrastructure planning demands that the fund is judiciously allocated over time. This allows for important infrastructure coming forward in the future to be funded. In view of this, the Council is currently updating its IDP to help with the future planning of infrastructure across the borough ensuring it aligns with the growth anticipated to come forward in the Local Plan and Borough priorities. This provides transparency to residents, members, infrastructure providers and the wider development industry on the type of infrastructure required to support long-term growth and development of the borough.
- 2.23 It is important to highlight that although a significant amount of SCIL has been collected over the past couple of years, the Council has nevertheless secured a significant amount of infrastructure investment through other mechanisms. These include planning consents, infrastructure provided within developments and funding for infrastructure secured via s106 legal obligations. Infrastructure has also been secured through work that has been undertaken with partners such as the Department for Education and TfL.

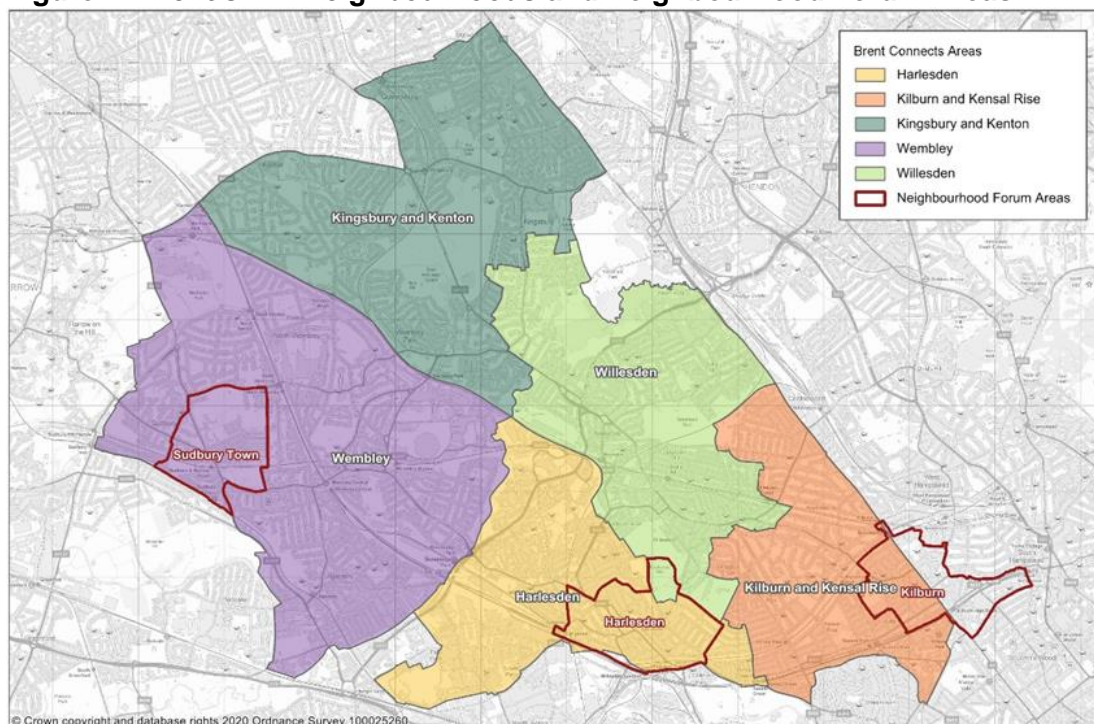
### **Neighbourhood CIL**

- 2.24 The CIL Regulations 2010 (as amended) stipulate that at least 15% of CIL receipts generated must be spent on Neighbourhood Projects. Whilst the legislation does not prescribe a process for how Neighbourhood CIL is allocated, the expectation is that priorities for spend are agreed with the local community.
- 2.25 A CIL Neighbourhood may also contain a Neighbourhood Forum with an adopted Neighbourhood Plan. In this case, up to 25% of CIL funds collected from liable developments within the Neighbourhood Forum boundary may be spent on priorities identified by the Neighbourhood Forum. NCIL collected within a Neighbourhood Forum may only be spent on projects put forward that will solely be within the relevant Neighbourhood Forum area and that meet the CIL Regulations.
- 2.26 There are currently three Neighbourhood Forums in Brent: Harlesden, Kilburn and Sudbury Town Residents Association (STRA). STRA and Harlesden Neighbourhood Forums have adopted a Neighbourhood Plan. Neighbourhood Forum priorities will be outlined in their Neighbourhood Plan and set for the duration of the Plan once adopted.
- 2.27 In line with the CIL Regulations, NCIL can be used to fund a very broad range of facilities such as play areas, parks and green spaces, public realm improvements, cultural and sports facilities, healthcare facilities, and other community facilities provided it is concerned with addressing the demands that development places on the area. The NCIL must be spent on priorities agreed in consultation with the local community. These priorities must be aligned with the needs of the local community.

CIL funding has no immediate deadline and therefore is available on a rolling annual basis. It is important to recognise that CIL receipts can only be spent on capital projects, although associated revenue spending to maintain those capital items is also permissible.

- 2.28 Brent is divided into five CIL Neighbourhoods - Harlesden, Kilburn and Kensal, Kingsbury and Kenton, Wembley, and Willesden. Brent also has three Neighbourhood Forum Areas – Harlesden, Kilburn and Sudbury Town. Figure 1 shows the locations of the CIL Neighbourhoods, with the Neighbourhood Forums marked in red.

**Figure 1: Brent's CIL Neighbourhoods and Neighbourhood Forum Areas**



- 2.29 Arrangements for spending Brent's NCIL were formally approved by Cabinet on 13 February 2017. The funding strategy for 2020-2023 which will be used for decisions on expenditure of NCIL was agreed by Cabinet on 14 January 2019. Since April 2017 we have received 573 applications for NCIL funding. In total, 296 projects have been awarded funding, with the allocation of £11,857,280.40 of NCIL money.

- 2.30 All shortlisted projects for NCIL funding must demonstrate that they:

- Meet the CIL Regulations (2010) as amended;
- Evidence of community backing;
- Address the impact(s) of development and supports ongoing development in the neighbourhood the project is being delivered in;
- Reflect the strategic priorities of the Council within the Borough Plan, meeting the theme of the specific NCIL round;
- Reflect the neighbourhood priorities within the neighbourhood the project is being delivered in;
- Are one-off projects that do not require additional revenue funding in their delivery or operation (or identify how additional revenue funding may be met)



but must have a lifespan beyond the funding and continue as part of the required infrastructure;

- Benefit diverse Brent communities, reflecting the demographics of the neighbourhood that the project is being delivered in; and
- Represent value for money.

2.31 The NCIL bidding system has been recently reviewed and for the first time, a new trial process of participatory budgeting will be implemented where shortlisted projects will receive funding through a public vote. This took place in the first NCIL round of the next financial year, 2022/23. A regular NCIL round is planned to take place for the second bidding round in 2022/23.

### **NCIL performance in 2021/22**

2.32 For the reported year, **£2,839,323.86 of NCIL** was collected.

2.33 **£4,575,043.36** was spent on projects during the same period.

2.34 Through the NCIL bidding process undertaken in 2021/22, the Council approved 67 projects for funding to deliver a variety of infrastructure projects across the borough, allocating £3,007,668.18. The projects and allocated NCIL amounts, along with spend of the NCIL approved in the 2021/22 bidding rounds are set out in Appendix 2.

2.35 Table 9 outlines the total NCIL allocation and projects by NCIL Neighbourhood in 2021/22. Many of the projects allocated NCIL in 2021/22 had programmes working across multiple wards/neighbourhood areas, but the principle neighbourhood where the project was based is where the money was allocated from. Appendix 2 shows which wards each project worked across.

**Table 9: NCIL allocations by NCIL Neighbourhood**

<b>NCIL Neighbourhood</b>	<b>No. of projects</b>	<b>Allocation</b>
Kilburn & Kensal Rise	10	£374,236.00
Kingsbury & Kenton	7	£228,341.04
Harlesden	15	£716,517.65
Wembley	28	£1,388,722.49
Willesden	6	£289,930.00
Harlesden Neighbourhood Forum*	0	£0
Sudbury Town Neighbourhood Forum	1	£9,921.00
<b>Totals:</b>	<b>67</b>	<b>£3,007,668.18</b>

*\*No successful NCIL bids were received within the Harlesden Neighbourhood Forum Area within the 21/22 Financial Year and therefore the amount allocated is £0'*

### **Summary of Projects Approved/Delivered in 2021/22**

2.36 **Mukul and Ghetto Tigers Limited: We are Alive and Kicking, Communities from Ealing Road** - The project captures a person's life in the community on Ealing Road through audio and art mediums. Through stories, the curators intend to show the huge diversity of people and businesses living and working on Ealing Road, mainly related to countries of the Indian Subcontinent, such as India, Pakistan, Bangladesh, Nepal, Sri Lanka and Afghanistan. Through the project, residents, businesses and visitors can learn about the wider cultures of the people who daily provide valuable

services to them in Ealing Road and in tandem increasing footfall within the Ealing Road.

2.37 **Triton Training: Triton Chances** - Triton Training in partnership with Willesden Sports Centre over two years, is offering free:

- Swimming Teaching and Lifeguard courses for Brent residents, which are industry-recognised courses through Swim England, STA and RLSS.
- Continual professional development opportunities (CPDs) for the new teachers and existing Brent swim teachers.
- New teachers will provide free lessons for Brent residents – targeting children, people with a disability and adults
- Support trainees into employment within Willesden Sports Centre and local swim schools.

Since the beginning of the project four candidates have all passed the course and three of them are working at Willesden Sports Centre and over 147 children attended free swimming lessons from across Brent.



Triton Training Swimming & Lifeguard Courses in Action (Source: LBB)

2.38 **St. John's Wembley Parochial Church Council** - The project saw the erection of two fences from the North West and North East corners of the Church to the existing boundary fence of Gilbert Scott Close, enclosing an area north of the Church. The fences aim to improve aesthetics in line with Historic England's requirements and reduce anti-social behaviour around the Church.



St. John's Wembley Parochial Church Fence (Source: LBB)



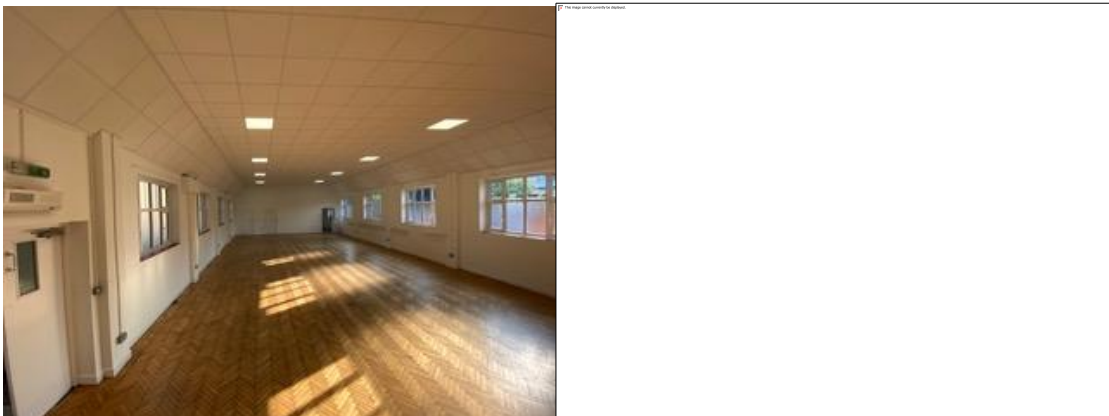
2.39 **Silver Jubilee Park Pitch Replacement - Kingsbury Town Management Co. Ltd -**

The 3G artificial playing surface installed eight years ago urgently needed replacement because it was unlikely to pass its test in May 2022. The project involved resurfacing the artificial pitch, providing a minimum of a further ten years to enable the current mental health, football & education program activities at the site to continue and expand.



New 3G Pitch at Silver Jubilee Park (Source: LBB)

2.40 **The Church of the Annunciation - The Annunciation Church Hall -** The project will update some of the facilities within the hall which need to be brought up to date including renewing the flooring, updating the kitchen area, improving accessibility, updating the heating and replacing doors and windows with double glazing.



The Annunciation Church Hall (Source: LBB)

2.41 **The US Charitable Trust, Youth Ambassadors –** The project is a monthly youth-led programme bringing a diverse group of young people together from across Brent. They aim to select a small, diverse group of young people from a variety of schools in Brent to create a regular group of around 25 young people (per year, 50 total). The programme will enable young people to engage with speakers from various cultures and industries, inspiring them to develop plans for high-skilled career paths. Throughout the programme, each young person will be given opportunities to take extra food parcels home and invite members of their family to the sessions.



The US Charitable Trust Youth Ambassadors (Source: LBB)

- 2.42 **Friends of Harlesden Town Garden - Wooden raised beds for community use at Harlesden Town Garden** - The project will ensure continued opportunity for food growing at Harlesden Town Garden and replace the raised beds before they become unsafe. The beds will be removed and replaced in phases, prioritising those most urgently needed. This approach will ensure that some food growing capacity remains throughout the growing year between April and October.



Wooden Raised Beds at Harlesden Town Garden (Source: LBB)

### **Future NCIL spending priorities**

- 2.43 The Council at its Cabinet meeting on 13 February 2017 agreed that the approach to NCIL would be reviewed every 3 years following community consultation on the neighbourhood priorities.
- 2.44 In August 2020, a revised approach to the NCIL funding strategy based on the review of the 2017 - 2019 projects and the consultation completed in December/January 2020 was agreed.
- 2.45 As part of this revised approach a more detailed analysis of the impact of development and growth, as outlined in the Brent Local Plan, will be undertaken. This will help determine what specific local infrastructure projects will be required to mitigate the impact of development. This will ensure NCIL is allocated in a way that meets neighbourhood priorities.
- 2.46 NCIL continues to be a very popular grant fund and consistently oversubscribed in all neighbourhood areas. Alongside the uncertain financial environment, there is a need to ensure the fund is accessed by all Brent's communities and that there is increased visibility of the grant awards made. During Autumn 2022 a further report will be taken to Cabinet with recommendations based on the learning to date and feedback from communities on the approach to distributing NCIL across Brent.

***Details of all approved NCIL allocations to date are available to view on our website – [brent.gov.uk/your-community/community-and-voluntary-sector-support/neighbourhood-community-infrastructure-levy-ncil-fund/](https://www.brent.gov.uk/your-community/community-and-voluntary-sector-support/neighbourhood-community-infrastructure-levy-ncil-fund/)***

# SECTION 106 CONTRIBUTIONS



**£8,307,265.22**

Total amount of S106 collected in 2021-22

**£4,358,969.38**

Total amount of S106 spent in 2021-22

**£4,986,893.92**

Total amount allocated to S106 projects

**20**

PROJECTS APPROVED FOR FUNDING

**27%**

AFFORDABLE HOUSING UNITS SECURED ACROSS 4140 UNITS

**1,107**

Affordable Housing units secured in 2021-22

**512** Affordable Rent

**443** Intermediate

**152** Social Rent



## ALLOCATIONS IN 2021-22



**£413,154.19**

Capital Programme



**£217,565.31**

Parks



**£19,161.45**

Culture



**£300,000.00**

Regeneration



**£84,939.74**

Employment & Skills



**£344,609.18**

South Kilburn Regeneration



**£12,000.00**

Landscape



**£3,595,464.05**

Transportation

### 3 Section 106 Planning Obligations

3.1 The Council enters in to Section 106 (s106) obligations with developers - a mechanism which makes a development proposal acceptable in planning terms. S106 obligations are focused on site-specific mitigation of the impact of development such as securing affordable housing or requiring improvements to an access road. CIL, on the other hand, is designed to raise funds for infrastructure needed generally as a result of an increase in development in an area, and is spent on community infrastructure projects across the borough.

3.2 During 2021/22, the following 27 S106 obligations were negotiated and agreed:

- All Units at Dowlings Parade, HNS Autos and Delta Hand Car Wash, Bridgewater Road, Wembley, HA0 1AJ
- Euro House, Fulton Road, Wembley, HA9 0TF
- Land rear of 25-45 odd, Woodside Avenue, Wembley, HA0 1UN
- 435-441 & 441A High Road, Wembley, HA9 7AB
- 233 Willesden Lane, Willesden, London, NW2 5RP
- 374 Ealing Road, Wembley, HA0 1HG
- 1-26A, coachworks & storage areas, Abbey Manufacturing Estate, all units Edwards Yard, Mount Pleasant, Wembley, HA0 1UE
- Car Wash, 470 Church Lane, London, NW9 8UA
- 291 Abbey Road and Car & Lorry park, Penny Road, London, NW10 7SA
- 312 Preston Road, Harrow, HA3 0QH
- 7-13 Holmstall Parade, Burnt Oak Broadway, Edgware, HA8 5HX
- 330 Ealing Road, Wembley, HA0 4LL
- 416 Ealing Road, Wembley, HA0 1JQ
- 1,2,3 & 9 Watkin Road, Wembley, HA9 0NL
- 162 Willesden Lane, Kilburn, London, NW6 7PQ
- Symal House, Edgware Road, Kingsbury, London, NW9 0HU
- 381A-D INC, 381-397 INC and 13-20 Park Parade Mansion, Edgware Road, Kingsbury, London, NW9
- Land Former 17 Northfields, Beresford Avenue, Wembley, HA0 1NW (known as "Grand Union")
- 1-8 Capitol Industrial Park, Capitol Way, London, NW9 0EQ
- 79-83 ODDS, Kenton Road, Harrow, HA3 0AH
- 5 Kingswood Road, Wembley, HA9 8JR
- Chancel House, Neasden Lane, London, NW10
- Unit 2, 2 Lowther Road and Units 3, 4 & 4A Lowther Road, Stanmore, HA7 1EP
- 6 & 6A Coombe Road, London, NW10 0EB
- Willesden Green Garage, St Pauls Avenue, London, NW2 5TG
- Trinity House, Heather Park Drive, Wembley, HA0 1SU
- Artisan House, Market Way, Wembley, HA0 2BT





330 Ealing Road (Source: Telford Homes c/o Barton Wilmore, architects TP Bennett)

3.3 Table 10 provides an update on the s106 receipts for the reporting year 2021/22.

**Table 10: S106 receipts for 2021/22**

Regulation requirement	S106 amount
The total amount of money to be provided under any planning obligations which were entered into during 2021/22	£5,462,979.56*
The total amount of money under any planning obligations which was received during 2021/22	£8,307,265.22
The total amount of money under any planning obligations which was collected in years previous to 2021/22 and carried forward into 2021/22 which has not been allocated by the authority prior to 2021/22	£4,533.412.50

\* Subject to index linking

3.4 In relation to non-monetary contributions, **1,107 affordable housing units were secured** on the following schemes:

**Table 11: Affordable housing units secured**

Site Name	Breakdown of Affordable Units	Total Units	Ward
Capitol Industrial Park	86 Intermediate 54 Social Rent	501 (28% AH)	Queensbury
Phase 1 (Blocks A-D) - Land Former 2-16 (consec) Northfields	98 Affordable Rent 39 Intermediate	439 (31% AH)	Alperton
8 Olympic Office Centre	34 Affordable Rent 43 Intermediate	253 (30% AH)	Tokyngton
381 Edgware Road	14 Intermediate	112 (13% AH)	Fryent

Site Name	Breakdown of Affordable Units	Total Units	Ward
1 Wembley Prestige Cars, Watkin Road	16 Affordable Rent 34 Intermediate	174 (29% AH)	Tokington
416 Ealing Road	13 Affordable Rent 6 Intermediate	132 (14% AH)	Alperton
Abbey Manufacturing Estate	53 Affordable Rent 22 Intermediate	581 (13% AH)	Alperton
330 Ealing Road, HA0 4LL	57 Intermediate 98 Social Rent	461 (34% AH)	Alperton
1-26A, coachworks & storage areas, Abbey Manufacturing Estate, all units Edwards Yard, Mount Pleasant, Wembley, HA0 1UE	152 Affordable Rent 66 Intermediate	684 (32% AH)	Alperton
435-441 & 441A High Road, Wembley, HA9 7AB	4 Affordable Rent	44 (9% AH)	Wembley Central
Euro House, Fulton Road, Wembley, HA9 0TF	142 Affordable Rent 76 Intermediate	759 (29% AH)	Tokington
<b>Total units</b>	<b>512 Affordable Rent 443 Intermediate 152 Social Rent</b>  <b>1,107 Total Affordable Units</b>	<b>4,140 Total Units</b> <b>(23.8% AH secured on average per scheme)</b>	



Abbey Manufacturing Estate (Source: Zed Homes Ltd c/o Bell Cornwell LLP, architects Broadway Malyan)



**Table 12: S106 allocation and expenditure**

Regulation requirement	S106 amount
The total amount of money (received under any planning obligations) which was allocated but not spent during 2021/22 for funding infrastructure	£1,766,491.01
The total amount of money (received under any planning obligations) which was spent by the authority (including transferring it to another person to spend)	Spent by Brent: £3,867,591.33 Transferred to TfL: £491,378.05 <b>Total: £4,358,969.38</b>
Total amount allocated to infrastructure projects in 2021/22 and the amount spent from these allocations. The items of infrastructure on which the money (received under planning obligations) during 2021/22 was allocated, and the amount spent on each item is shown in Appendix 3	Allocated: £4,357,166.59 Spent: £2,590,675.58
The amount of money (received under planning obligations) spent on repaying money borrowed, including any interest, with details of the items of infrastructure which that money was used to provide (wholly or in part)	Not applicable
The amount of money (received under planning obligations) spent in respect of monitoring (including reporting under regulation 121A) in relation to the delivery of planning obligations	£95,058

- 3.5 The total amount of money received (under any planning obligations) during any year which was retained at the end of 2021/22 is £18,572,734.09. Table 15 shows the breakdown of these funds.

**Table 13: S106 position at the end of 2021/22**

Total Unallocated S106 Funds	Total Allocated S106 Funds	Total Unspent*
£9,521,873.96	£9,050,860.13	<b>£18,572,734.09</b>

\*Unspent is money which is yet to be allocated along with money that has been allocated and has yet to be drawn down by the projects to which it is allocated

- 3.6 A total of £4,986,893.92 was allocated across 20 S106 projects in 2021/22. The table in Appendix 3 shows the projects which had S106 money allocated to them in 2021/22. A summary of some of the S106 projects allocated money in 2021/22 is provided below.

## Summary of S106 projects Commissioned in 2021/22

### Capital Programme

- 3.7 **Roe Green School Kitchen Improvement Project** - The project will extend the existing servery kitchen at Roe Green Infant School and provide commercial kitchen facilities so that infant meals can be prepared on site. It will also include building fabric condition and mechanical & electrical condition improvement works including fire and security alarm extensions, recommissioning of the heating system and reinstating the hot and cold water systems.



Roe Green School Kitchen Extension (Source: LBB)

### Culture

- 3.8 **Women's Euros Art Wembley** – To help celebrate the UEFA Women's Euros football tournament 2022, the Brent Museum and Archives service worked with students from University Campus of Football Business to gather oral histories capturing stories of women in sport. These sound installations were positioned under the Bobby Moore Bridge and as part of an installation of historic Wembley stadium seats with embedded listening posts, located on the Wembley Park estate. The project was completed with match funding provided from the National Lottery Heritage Fund.



Sound Installations and Seats in Wembley Park (Source: LBB)

- 3.9 Following the tournament final, the seats have been relocated into Brent Civic Centre as part of the Women of the Match photographic exhibition which depicts some of the inspiring women and girls involved in the game locally. Work is also underway to ensure the oral histories are accessible online for future audiences to discover. The exhibition and installations have also been supported by a programme of family arts and craft activities in the library.



Women of the Match Photographic Exhibition (Source: LBB)

### Employment & Skills

- 3.10 **Brent Works: Employment Brokerage Support** - Brent Works offer a job brokerage service which matches local residents to local jobs and training including construction and commercial jobs and the creation, promotion and placement of Apprenticeship opportunities. The Brent Works team work with the residents to prepare them for appropriate training or employment opportunities which align to their career aspirations. This includes training such as CSCS, Traffic Marshall, functional skills as well employability support such as confidence building, team working, CV and interview skills. Once ready for the workplace, the team will match the resident with a local employer that has a suitable vacancy. The team has already successfully supported over 200 residents' find suitable training through S106 obligations.

### Landscape

- 3.11 **Kilburn Lane Trees** - New trees are to be planted in Kilburn Lane and other adjacent streets. Kilburn Lane has a poor public realm, with buildings close to the street with limited street trees. With a lack of public open space and limited private amenity, the planting of the trees should help green Kilburn Lane to betterment of the local residents and users.



## Parks

- 3.12 **Gladstone Park Restoration** – Simple all weather planting and the insertion of 15 metres of hooped railing in two locations next to the café will help to improve the welcoming feel of the park for visitors. The plants will also be pollinators and enhance habitats for bees and insects.



Completed Gladstone Park S106 Works (Source: LBB)

- 3.13 **Monks Park & Sherrin's Farm Play Equipment** – The project would allow for improvements to two local parks, providing improvements to existing playgrounds in Monks Park and providing a completely new children's playground in Sherrin's Farm with a replacement play area for u12's and a replacement zip wire for teenagers. Additional improvements to the local area of both parks include; bulb planting to provide colour, additional benches, replacement litter bins and the installation of some bird and bat boxes. The works will provide significant improvements to the general look and feel of the park for the benefit of all park users and facilitate a connection with nature for park visitors.
- 3.14 **Woodcock Park Improvements** – The works are aimed at increasing usage of the park, reducing anti-social behaviour and encouraging more education usage around Wealdstone Brook through links to the wider Wealdstone Brook Naturalisation project. Child seats and tables, information boards, benches, litter bins, planting and works to reduce tree heights and density at two locations will be included within the works.

## Regeneration

- 3.15 **Affordable Workspace 10-11 Watkin Road** – The project is supporting the fit-out of 10-11 Watkin Road shell and core to create 31 self-contained ground and first floor studio affordable workspace units. The units will be made available to those in the visual arts, with priority given to Brent residents. The scheme will support in the region of 50 full time employees.

- 3.16 **Carlton Vale Boulevard Trees** – The S106 contribution will help deliver approximately 110 trees as part of the wider long term Carlton Vale Boulevard. The project aspires to transform Carlton Vale into an ecologically diverse, tree-lined avenue with re-imagined public spaces and improved transportation links.
- 3.17 The wider proposed changes to Carlton Vale Boulevard, which this project is a part of, will increase the level of service for cyclists by providing full segregation with the carriageway and footway, increase access to the new public realm and widen the footway for increased pedestrian comfort and higher future footfall. The upgrading of the public realm on Carlton Vale is seen as vital in encouraging South Kilburn residents to undertake more trips by cycling and walking.



CGI of the proposed Carlton Vale Boulevard Project. (Source: LBB)

- 3.18 **Community Provision for users of the Carlton and Granville Centres** - This project is a one-off provision to support the key stakeholders at the Carlton and Granville Centres in delivering extra community facilities and support. The Council's South Kilburn Estate Regeneration team has worked closely with the Family Wellbeing Centre, Granville Community Kitchen, Granville Plus Nursery School and South Kilburn Trust to help address some gaps in their provision. The funding has helped purchase a range of items, including:

- A new recording studio;
- Lockable sheds;
- Children's play equipment ranging from sensory toys to yoga mats; and
- Video making equipment including headsets and soundboards.

- 3.19 These users are also due to benefit from significant improvements to their existing facilities through the commencement of Phase 2 works to the Centres. This is part of the South Kilburn Masterplan programme.

### **Transportation Projects**

- 3.20 **Borough Wide Station Cycle Parking** – Providing cycle parking for 108 cycles near stations, for residents and visitors to enhance active travel and help increase the uptake of sustainable modes, in particular cycling across the borough.



- 3.21 **Go Ultra Low City Scheme (GULCS) Vehicle Charging Points Phase 3** - Lamp Column Charging is a new technology to embed Electrical Vehicle Charging Point (EVCP) into Streetlights. The technology is being rolled out in Brent through funding from the Go Ultra Low City Scheme and S106, supporting the ownership and use of greener vehicles within the borough. The Ubitricity 'Smart Socket' technology will be installed at various lamp posts across the borough by Siemens and Ubitricity, with Siemens installing and maintaining the ubitricity charging technology. During 2021/22 242 EVCPs were installed, bringing the total number to 425.
- 3.22 The move is part of a wider effort to bring more EV charging availability to the growing numbers of UK drivers without private parking, with an aim to create cleaner and greener local communities.



Examples of the EVCPs Installed within Bollards and Lampposts around the Borough (Source: LBB)

- 3.23 **Legible London Signs around Wembley Stadium** – Legible London signage are a common sight across London and the borough, this scheme worked to increase the legible London signage around Wembley stadium to improve the overall image of the destination, give consideration beyond the immediate area of the stadium and promote walking in the area through helping pedestrians to understand how to access local amenities in the Wembley Growth Area.



Examples of some of the Legible London Signage Installed through the S106 Funding (Source: LBB)



- 3.24 **Roe Green / Kingsbury Road Signal Junction** – The Council has identified the need to improve pedestrian facilities, road safety and reduce peak-time congestion at the signalised junction in Roe Green/ Kingsbury Road/ Slough Lane. There are currently pedestrian facilities on the eastern arm of this junction, however these are insufficient in light of current accident trends, user demand, and the council's own aspirations around pedestrian safety and permeability across the borough.
- 3.25 The revised signalling arrangements as well as modifications to the kerb line will improve provision for pedestrians and bus movements.
- 3.26 **Hostile Vehicle Mitigation (HVM)** - Following the terrorist attacks in 2017 on Westminster Bridge, Houses of Parliament and Borough Market, the Metropolitan Police Counter Terrorism Security Advisor recommended improving the security of the road network leading into the event day area within the borough, thereby protecting the thousands of fans that attend Wembley on stadium event days.
- 3.27 HVM measures were identified at strategic locations to prevent vehicle incursion onto pedestrian routes but to allow resident access where possible around the Wembley Park Area.



Example of one of the HVM Measures on Engineers Way (Source: LBB)

- 3.28 **Wembley Two Way Working – Phase 2** - As identified in the Wembley Area Action Plan, there is the need for new road connections and junction improvements to support the ongoing development of the Wembley Growth Area. These include the significant road improvement scheme, providing access to North End Road and the Wembley Regeneration area on event days, and a new two way system which has now been implemented to improve traffic flow and connectivity through the area.

#### 4 Section 278 Highway Agreements

- 4.1 Section 278 (s278) of the Highways Act 1980 allows a developer to carry out works to the public highway. This is generally necessary where planning permission has been granted for a development that requires improvements to, or changes to, public highways.
- 4.2 During 2021/22 the Council entered into two s278 highways agreements. The associated developments along with the description and value of these highway works are outlined below.

**Table 14: s278 agreements in 2021/22**

<b>Development</b>	<b>Fairview Homes (17/2611), Lakeside Drive</b>
<b>Description of works</b>	Various vehicular access, loading bay and cycle path extension
<b>Value of works</b>	£371,437.03
<b>Status</b>	Complete, pending snagging
<b>Development</b>	<b>Kelaty House (12/1293), First Way</b>
<b>Description of works</b>	Various vehicular accesses and footway reconstruction
<b>Value of works</b>	£44,566.03
<b>Status</b>	Complete

### Appendix 1 – CIL COVID-19 Deferral Applications

Planning Permission Number	Address	Amount Deferred	Original due Date	Deferred Due Date
20/0685 <sup>1</sup>	79-83 ODDS, Kenton Road, Harrow, HA3 0AH	£20,700.55	15/11/2020	20/11/2021
18/4486 <sup>2</sup>	196 Willesden Lane, Kilburn, London, NW6 7PR	£319,275.71	16/11/2020	28/10/2021
21/0124	17 Mayfields, Wembley, HA9 9PR	£26,410.57	12/04/2021	13/11/2021
21/0020	1-14 INC, Kenny House, 38 Birse Crescent, London, NW10 1SF	£144,942.84	21/05/2021	09/12/2021
19/0670	758-760 Harrow Road, London, NW10 5LE	£61,503.57	04/01/2021	16/10/2021

---

<sup>1</sup> 20/0685 is a S73 Variation granted COVID deferral applied to permission 19/4473 granted on the same site in Q3 20/21.

<sup>2</sup> 18/4486 is a further COVID deferral of the same permission granted in Q3 20/21.

## Appendix 2 – Allocated NCIL Projects and Spend in 2021/22

Project	Summary of Project	Brent Connect Area	NCIL Allocated	NCIL Spend
Box for Your Future	This project will create a community mosaic artwork on the platform at Kilburn Jubilee line tube station. The mosaic design will use imagery that promotes access to and knowledge of local green spaces and other familiar Kilburn landmarks. The mosaics will be created by local school involvement in 8 workshops and local residents in 8 other workshops.	Kilburn & Kensal Rise	£10,000.00	£0
Brent Goes Sustainable	Brent goes sustainable is led by a consortium between Start Easy, Phoenix Rising, Clube dos brasileiros, AlexZEducational and supported by the John Muir Award and the United Nations Youth Alliance. Brent goes Sustainable is an 18-months partnership enabling Children and Young People aged 5-18, and families under 5's from backgrounds currently under-represented in climate action, to link environmental issues with science/experimentation to preserve and improve their local area. The programme aims to get children and young people involved in planning matters and exploring aspects of STEM in less formal settings.	Kilburn & Kensal Rise	£50,000.00	£0
Creative Wellness & Cultural Connexions	This is a creative wellbeing project that will help to break isolation, improve mental and physical wellbeing, rekindle a sense of community spirit through a combination of face to face creative workshops which will bring vulnerable adults and older persons who have been isolated during Covid together	Kilburn & Kensal Rise	£37,424.00	£18,712.00
Heart of Cricklewood	Cricklewood Town Team (CTT) is requesting a one-off grant from NCIL to enhance the pedestrian area (known as "The Piazza"), to re-activate it, and help it recover from the lockdown.	Kilburn & Kensal Rise	£17,230.00	£9,316.50
Keslake Pocket Park Improvements	The project will remodel Keslake Pocket Park to make it safer and design out anti-social behaviour, crime, loitering and littering by providing a layout and street components that create a well-lit, safe, and open space. There will be increased visibility both into and across the space and the new design will provide a pleasing visual amenity, as well as a small square area for the local community	Kilburn & Kensal Rise	£124,700.00	£0
Kilburn Tube Mosaic	This project will create a community mosaic on the platform at Kilburn Jubilee line tube station. The mosaic design will use imagery that promotes knowledge of local green spaces and other familiar Kilburn landmarks. The mosaics will be created by local schools and residents in a series of workshops.	Kilburn & Kensal Rise	£7,962.00	£0
Linden, Langler and Mortimer Trees	Linden Avenue, Langler Road and Mortimer Road Trees has been brought forward as a project by numerous residents in the area who wish to improve their environment by planting new trees.	Kilburn & Kensal Rise	£46,000.00	£0

Project	Summary of Project	Brent Connect Area	NCIL Allocated	NCIL Spend
Love Brondesbury Villas Community Garden	Love Brondesbury Villas wish to regenerate a Pocket Park in North West London turning it into a Community Garden for all to enjoy. They want to make improvements by investing in planters, new seating, porous surfaces to replace existing hard landscape and new plants/trees. The plan is to work alongside Brent Council & Energy Garden to ensure community engagement and long term maintenance of the space.	Kilburn & Kensal Rise	£30,920.00	£0
Project Playground	The school proposes a refurbishment and enhancement of their playground and outdoor areas at Salusbury primary school. They state that the main areas of the playground need a new tarmac surface to provide accessible spaces that can be used for a range of sporting activities and are fit for purpose year round. Once the resurfacing work is complete, they will begin phased upgrades to all outdoor areas, with the ambition of creating spaces that can be used by children of all primary ages to benefit their physical and mental wellbeing and improve learning outcomes.	Kilburn & Kensal Rise	£25,000.00	£0
Trees for All Souls Avenue	The aim of this application is to secure funding to plant trees along All Souls Avenue, a street with a diverse population and a large number of families.	Kilburn & Kensal Rise	£25,000.00	£0
The Brook Way Biodiversity Community Project	The funding requested is for the introduction of a mural to be painted on a privately owned wall and we will involve both local schools in a design competition.	Kingsbury & Kenton	£8,275.00	£0
Curbing anti-social behaviour at All Saints' Church and Hall, Queensbury	This project seeks to curb anti-social behaviour by installing new lighting in parts of the grounds and security features to act as a deterrent.	Kingsbury & Kenton	£8,466.04	£8,466.04
Fryent Country Park - Slough Lane entrance path and other improvements to the Park	The project aims to improve the drainage of the path off Slough Lane to make access easier; and to use that surface water to create a wildlife swale feature.	Kingsbury & Kenton	£46,600.00	£0
Kggs Muga Playground Project	The project proposes that the school would use their existing playground to re-surface the area in order to provide a 2.5m x 39m (1,276.5m <sup>2</sup> ) Multi-Sport MUGA. This includes a 3m high fencing along with a gated entrance. The design will enable 5-a-side, and 7-a-side football matches, netball/basketball courts/tennis courts with wheelchair access. The size of the proposed MUGA will fit into the existing playground. The MUGA will also have floodlights to ensure that they are able to provide use during evenings to enable maximum use. .	Kingsbury & Kenton	£50,000.00	£0

Project	Summary of Project	Brent Connect Area	NCIL Allocated	NCIL Spend
Leybourne Open Space Regeneration	Regeneration of an open space area that is currently a plain patch of overgrown grass/weeds	Kingsbury & Kenton	£25,000.00	£0
Silver Jubilee Park Adventure playground	The project seeks to create a brand new adventure playground in Silver Jubilee park. It will install and secure a suitable fence to ensure a safe space for children to play and express themselves freely, without having to worry about other park users or traffic from the nearby roads.	Kingsbury & Kenton	£50,000.00	£0
Silver Jubilee Park Pitch Replacement	The current 3G artificial playing surface is in urgent need of replacing because it is unlikely to pass its next test in May 2022. The organisation have managed to save £235,000 towards the full cost of £275,000, leaving a shortfall of £40,000. Over 600 boys and girls between the ages of 4 and 18 using the ground each week, all the above are in serious jeopardy if the playing surface is not replaced.	Kingsbury & Kenton	£40,000.00	£0
Brent Music Service Harlesden Music Centre Project	Providing local, easily accessible venues to address the barriers preventing CYP participation in out-of-school music activity. Weekly centres will be available for children in Harlesden schools and will become progressively more visible in the community as the project progresses	Harlesden	£100,000.00	£0
Community Disparity	The projects main aim is to reduce social & health inequalities. To do this they aim to raise digital upskilling and confidence in addition to holding discussion sessions in BAME locality mosques, religious and community centres as well as schools. They also state that they will establish a helpline to identify needs beyond basic needs. The aim is to empower locals to share advice/info or signpost them to support services.	Harlesden	£23,602.00	£0
Connecting Young Refugees and Asylum Seekers in Brent to Opportunity	Young Roots' new project will support young refugees and asylum seekers aged 16-25, in Brent, to access volunteering or work opportunities and improve their skills for work.75% of the young people supported will be asylum seekers without the right to work: they will focus on building their soft skills, confidence, and experience so they are ready when they eventually get their status. 25% will be refugees, mostly aged 20-25, who are able to work: they will focus on CV writing, interview skills, finding job opportunities, managing expectations and building their understanding of UK work culture and systems.	Harlesden	£36,314.00	£0
Developing Roundwood Community Campus – Beckmead Trust	YBF will lead a consortium of three organisations will pilot a fully managed and adequately resourced Integrated Youth Offer at Roundwood and develop the ad hoc after-school program into a thriving and sustainable Community Campus.	Harlesden	£48,004.00	£0



Project	Summary of Project	Brent Connect Area	NCIL Allocated	NCIL Spend
Developing Roundwood Community Campus - VCS	YBF will lead a consortium of three organisations will pilot a fully managed and adequately resourced Integrated Youth Offer at Roundwood and develop the ad hoc after-school program into a thriving and sustainable Community Campus.	Harlesden	£49,504.00	£0
Developing Roundwood Community Campus - Young Brent Foundation	YBF will lead a consortium of three organisations will pilot a fully managed and adequately resourced Integrated Youth Offer at Roundwood and develop the ad hoc after-school program into a thriving and sustainable Community Campus.	Harlesden	£47,520.00	£0
Gladstone Park Public Art Commission	The project will create an artistic display using planting and installation to reflect the links to slavery and colonies/commonwealth of which many of Brent communities have links to. The commission will see Lin Kam Art co-produce the artwork with key stakeholders such as schools/young people, the Black Community Action Plan Leadership Group and the wider black community, holding space for conversation and delivering workshops where they can feed into shaping the project. The project will also engage with wider stakeholders such as the Friends of Gladstone Park and Willesden History Society.	Harlesden	£30,000.00	£0
The Healing Garden Club	AWRC is applying for funding for a Healing Garden project. Its aim is to restore the AWRC garden so that it can provide a safe and pleasant outdoor space for the local community. Funds will enable: removal and replacement of existing brick wall at the rear and side of the garden; installation of a wooden fence; a wooden garden house for use throughout the year as additional multi-use space for both staff and women; a garden shed to store equipment and garden tools; patio area for recreational use.	Harlesden	£50,000.00	£0
Peaceful Parents And Happy Children	The grant will reach out to Polish families who only fluently speak their own native language to improve the mental wellbeing for students, teachers, staff members and parents. Project will offer specific courses enabling young people with mental health difficulties to distinguish their different moods and make informed decisions about their lives and their future.	Harlesden	£20,167.00	£0
Our Built Environment Summer Programme	The project is for a 5-hour a day, 5 day a week summer programme over 4 weeks. It is a design & build project and a vertical farming project. It is a practical/academic mix to give learners access to and understanding of Architecture, Engineering and Technological Agriculture whilst promoting the importance of climate environmental awareness. The focus will be on design, art, engineering, food growing, sustainability, community and climate control as well as the learning of home management skills.	Harlesden	£39,240.00	£0

Project	Summary of Project	Brent Connect Area	NCIL Allocated	NCIL Spend
Salvation Army Harlesden Community Hub	This project will help to redevelop the Corps' community hub to increase its size by; expanding the size of the original hall and building additional floors, this will provide the Harlesden community with community rooms, a hall, a café, and community gardens.	Harlesden	£78,750.00	£30,000.00
Stonebridge Outdoor Gym	Stonebridge Outdoor Gym provides free access to a local sport, health and wellbeing for children, young people and the wider community so that they can use this on their doorstep resource to tackle current barriers to exercise for the socially isolated and those who are unable to access the commercial alternatives. The Stonebridge Outdoor Gym, unlike similar alternatives will be accessible all day 365 days a year and based on two sites in Stonebridge, with one bespoke for children and young people.	Harlesden	£50,000.00	£0
Supporting Community Recovery Through Increasing Capacity at the Fawood Family Wellbeing Centre	The project is to support recovery in the community, following the covid-19 pandemic, by increasing the capacity of the Fawood Family Wellbeing Centre.	Harlesden	£91,000.00	£50,000.00
Wooden Raised Beds For Community Use At Harlesden Town Garden	The community group state that in order to ensure continued opportunity for food growing at Harlesden Town Garden it is necessary to replace the raised beds before they become unsafe. The beds are to be removed and replaced in phases, prioritising those in most urgent need and leaving the least urgent beds to be replaced last. This approach will ensure that some food growing capacity remains throughout the growing year between April and October. The project is expected to be completed in March 2023.	Harlesden	£30,116.65	£0
Youth Ambassadors	Youth Ambassadors is a monthly youth-led programme to bring young people together from across Brent. They aim to select a small, diverse group of young people from a variety of schools across Brent to create a regular group of around 25 young people (per year, 50 total). Across two years, the group will meet monthly, during term time, to have a restaurant meal with a speaker who is successful in their respective industry. The aim is to enable young people to engage with speakers from a range of cultures and industries to inspire them to develop considered plans for high-skilled career paths The project is for 16-18 year olds that live or attend school Brent.	Harlesden	£22,300.00	£0

Project	Summary of Project	Brent Connect Area	NCIL Allocated	NCIL Spend
After Covid-19, Youth Crime Prevention Project	The project is a youth club which will be run once a fortnight for one year and will be supervised by adults. The club will enable the youth to raise their concerns and share their experience of being in a family where there was a victim of crime, where either someone died, or their health has been seriously affected. The idea is for the youth to meet their peer groups and make new friends while sharing their views and experiences.	Wembley	£11,960.00	£0
Aspire	Aspire will take 20 organisations (2 employees per organisation) on a learning journey that equips and guides them to access, boost and grow their funding-related activities	Wembley	£55,000.00	£27,500.00
Bbmc Youth Supplementary Learning Project	This project will provide a safe learning centre Brent youths between the times their school or college days end, and when they can either be picked up or escorted safely home. The organisation will provide creative industry based activities. Industry tutors and mentors will provide daily-supervised activities until participants can be collected by their parent or guardians.	Wembley	£48,450.00	£0
The Brent Guitar Club	The project will focus on hands on instrumental music learning, primarily using acoustic guitars in a group environment for young people between 7 and 18 and some sessions for older members of the community, those living with dementia and those who are workless.	Wembley	£30,600.00	£15,600.00
Brent Skills and Wellbeing	Project aims to deliver a new Skills and Wellbeing programme over the next 2 years. Utilising their links with Family and Wellbeing Centres they will expand the reach of community physical activity and youth sessions for children and young people, delivering in all 8 centres, and other community venues, so more young people can experience a 12 week activity programmes and co-create future activities there. They will build a formal programme to support young people to develop skills and increase their employability. Plan is to support young people to gain Sports and Leadership qualifications and valuable experience, while preparing them for the next steps in training or work.	Wembley	£49,000.00	£0
Brent Somali Group Roadshow	This project will look at recruiting volunteers and training them in mental health awareness as well as a 40 week physical and wellbeing project	Wembley	£56,840.00	£30,000.00
Chalkhill Community Growers	The grant will reach out to Polish families who only fluently speak their own native language to improve the mental wellbeing for students, teachers, staff members and parents. Project will offer specific courses enabling young people with mental health difficulties to distinguish their different moods and make informed decisions about their lives and their future.	Wembley	£22,041.00	£0
Chalkhill Parent and Toddler Group	Daniel's Den (DD) would like to open and start a Parent/Carer and Toddler (PaT) group in Chalkhill Community Centre. These groups provide a safe space for	Wembley	£9,997.00	£9,997.00

Project	Summary of Project	Brent Connect Area	NCIL Allocated	NCIL Spend
	carers to meet other families, be known in their community, stimulate and develop a child's confidence through play and activities.			
Critical Thinking About Behaviour Choices Project (Knife Crime & Serious Youth Violence)	The project will involve offering schools and other education providers, a package which includes a 2-hour interactive online workshop and accompanying interactive tools that focus on building resilience against knife crime and serious violence. The project will enable the organisation to deliver workshops to 2000 children and young people attending Brent schools. The project will allow participants to develop a range of skills that will help build resilience and steer them away from becoming involved in criminal activities and acts of violence.	Wembley	£42,560.00	£0
Erection of security fences to inhibit anti-social behaviour	Erection of two fences from the North West and North East corners of the church to the existing boundary fence of Gilbert Scott Close, enclosing an area North of the Church.	Wembley	£17,300.00	£17,300.00
Faith in Recovery	Project delivering 4 separate elements and directly support some of Brent's strategic priorities. Elements include: enhancing engagement with LB Brent Strategies, developing a relationship and working with the Police, relaunch the Borough of Sanctuary programme, enhance Interfaith relations and collaboration within Brent	Wembley	£73,820.00	£49,213.34
Filmscope - Community Cinema	The project consists of FREE film screenings over a period of 12 months showing an eclectic mix of films at the community space at The Yellow, for the public, schools, community groups, older residents and disability groups. These will be accompanied by post-film discussions, workshops, film quizzes, raffles, themed activities. They will implement animation workshops in partnership with The Yellow targeting local primary and secondary school pupils to encourage creative learning and provide access to a unique skillset. The project will conclude with a 3 day Film Festival at the Yellow.	Wembley	£25,800.00	£0
From Post Code Beefs To Programming Codes	Al Ridha seek funding for a Coding Programmer and running costs for their code making skills project which is a Bootcamp to provide education, employment and training for disadvantaged NEET young people between the ages of 16-24. Attendees will be able to pursue a career in coding and/or programming due to the project links in the industry. They will also plan, write and develop computer coding/programming for future games or apps etc., in this way considering their choices and develop an end product of a 'market-ready' online presence.	Wembley	£40,300.00	£0
Great Minds Project	Young Roots' new project will support young refugees and asylum seekers aged 16-25, in Brent, to access volunteering or work opportunities and improve their skills for work.75% of the young people supported will be asylum seekers without	Wembley	£50,000.00	£0



Project	Summary of Project	Brent Connect Area	NCIL Allocated	NCIL Spend
	the right to work: they will focus on building their soft skills, confidence, and experience so they are ready when they eventually get their status. 25% will be refugees, mostly aged 20-25, who are able to work: they will focus on CV writing, interview skills, finding job opportunities, managing expectations and building their understanding of UK work culture and systems.			
Hearts of Talent	Hearts of Talent, formerly The Brent Factor, is dedicated to combating violence and crime in the community. The program's goal is to immerse participants in a Talent Show with various events, performances, mentoring and workshops. The Annual program will have a series of auditions hosted around critical areas and events in the local community and continues through to the summer. Following the summer auditions, they have Heats as checkpoints throughout the programme that allow them to track the participants' improvement and advance those moving to the final show.	Wembley	£50,000.00	£0
Jason Roberts Foundation - Connect Brent Project	Undertake much needed upgrading works at The Pavilion, the community centre where the charity is based. The project will make the centre an all-weather facility that can be used by residents and community groups all year-round, by erecting a steel canopy over the multi-games area and 5-a-side pitch	Wembley	£194,988.00	£194,988.00
Lyon Park - Multi Use Games Area (Muga)	The school wishes to construct a new multi-use games area which is fit for purpose and offers value for money. The MUGA will improve sport and physical development provision for over 800 pupils from our local community by providing a suitable and safe learning environment. The school is willing for the MUGA to be used by the wider community and has received support from a local sports provider about using the proposed facilities for holiday sports clubs.	Wembley	£50,000.00	£0
Open Space for the Whole Community Project	The proposal by the residents is to enhance the quality of Alperton Sports Ground and address concerns raised by residents around the lack of outdoor and play facilities, anti-social behaviour, security and safety concerns as a result of development.	Wembley	£100,000.00	£0
Reducing Health Inequalities Through Physical Activity	The proposed project will deliver 3 sports training sessions for 100 socio-economically deprived young people on a weekly basis for 40 weeks. These will be from basketball, football, tennis, rugby, etc. Participants will be young people from ethnically diverse backgrounds who live in Wembley and the surrounding area. Ten qualified sports coaches will deliver the sessions.	Wembley	£48,694.49	£0
Refurbishment of alleyway between Blenheim Gardens	Creating a safe space for local residents by refurbishing alleyway that is susceptible to ASB. Project will also seek to improve active travel in the area.	Wembley	£17,500.00	£0

Project	Summary of Project	Brent Connect Area	NCIL Allocated	NCIL Spend
and St. Augustine's Avenue				
School Colourful Crossings Wembley	Artists in Residence will be working collaboratively with local schools to design and make three wonderful and aesthetically pleasing colourful crossings in 3 major roads in Wembley.	Wembley	£64,000.00	£0
Snakes & Ladders, Stories of Survival in Times of Turmoil	Aim is to gather stories from people who have experienced times of turmoil and found moments of lightness to survive. They will gather a vast array of stories; from immigration, to living in a conflict zone, surviving poverty and grief. The research will underpin the development of an original Musical that will be performed in July 2022. They want to use the illustrations created as part of the musical animation to create a lasting legacy that will be available both digitally and as a hard copy to the community of Brent & beyond.	Wembley	£38,800.00	£0
Sport 4 Inclusion & Wellbeing	The project will provide physical/sport wellbeing activities and support to 100, 5 to 18 years olds. The "Sport 4 Inclusion & Wellbeing" project will be delivered by qualified and life experienced workers with knowledge of Brent that will engage, facilitate, train and support participants during the life of the project. They will operate from different sport facilities venues. Wembley FC, Vale Farm and local Academies.	Wembley	£44,910.00	£0
Stronger Together	The program will allow a pathway into security employment through achieving SIA Security, Mental Health and General First Aid qualifications along with employability coaching sessions. This will be achieved through a ten day tailored development program targeted but not limited to 80, 18 - 28 year old unemployed Black and Asian individuals within Wembley; delivered across 7-9 months. They also state that those that complete the program will receive a guaranteed interview. This will be achieved through the network of security companies which they work with in their industry.	Wembley	£42,460.00	£0
Tech Made Easy for Seniors	Mixture of in-person and online sessions to equip older people with basic IT and digital communication skills. This project will address isolation, improve skills and confidence. The project will directly support 192 individuals and encourage them to pass on their skills and knowledge to their elderly friends.	Wembley	£62,981.00	£29,059.00
We are Alive and Kicking – Communities from Ealing Road after Covid	Community encounters between producers and members of the communities a series of photographs, numerous audio interviews and footage for a short film are taken and artistically presented in an upcoming exhibitions and events series (online and onsite) in the London Borough of Brent.	Wembley	£49,500.00	£25,000.00

Project	Summary of Project	Brent Connect Area	NCIL Allocated	NCIL Spend
Well Well	The project focuses on the creation of a mental health and well-being hub within Chalkhill Community Centre. It will involve specific open and activity based sessions which will help build connectivity, build resilience and increase community connections. Physical activity and making use of outdoor resources/being in the open air will also be a priority. There will be informal mental health support and individual targets for participants.	Wembley	£48,381.00	£0
Zest of Mind Summer School	The project is for a summer school which will deliver to 5 wards within Brent during the summer holidays. The school will run for 3 days a week over 4 weeks. Participants will attend workshops which will be provided by the army and community tutors. The workshops within the summer schools will consist of training in peer mentoring, self & career development, IT skills, performing arts and physical fitness. These sessions will be facilitated by the Army and used to support life skills and mental health resilience.	Wembley	£42,840.00	£0
The Annunciation Church Hall	The project aims to update some of the facilities within the hall which needs to be brought up to date. They plan to replace the windows and doors with new double glazing to increase the energy efficiency of the hall and make it more secure. They also wish to update the heating system with an eco-friendly system, renew the flooring, provide new chairs for 80 people as well as improving the electrics redecorate, and improve disabled access. Finally they also state they will update the kitchen area.	Willesden	£50,000.00	£0
Connect for Change	A two-year, early intervention mentoring scheme, it will support 110 at-risk 8-11-year-olds, in the lead up to the transition from primary into secondary school. They aim to match each child with a volunteer mentor, who they will train and support. Each pair will spend one year together, meeting once a week one on one, having up to 100 hours of sessions in the community. Sessions take place out of school hours – continuing during the 'summer learning gap', with a budget of £30 per month to enjoy activities chosen by the children.	Willesden	£49,380.00	£0
Healthy Irish Elders	The project will be a weekly activity group that is run predominantly for older Irish residents of Brent.	Willesden	£49,378.00	£13,000.00
New heritage gates at Willesden Jewish Cemetery	This project will purchase and install new gates for Willesden Jewish Cemetery, which is of nationally important inheritance.	Willesden	£50,000.00	£25,000.00
Sakura Cherry Trees	This bid is to cover the cost of work to prepare ground for planting Sakura Cherry trees, stakes, compost, watering bags, plus event costs for a community planting day where residents are invited to plant a tree.	Willesden	£28,750.00	£0

<b>Project</b>	<b>Summary of Project</b>	<b>Brent Connect Area</b>	<b>NCIL Allocated</b>	<b>NCIL Spend</b>
Triton Chances	Triton Training will offer free Swimming Teaching and Lifeguard courses for Brent residents, these are industry recognised courses through Swim England, STA and RLSS.	Willesden	£62,422.00	£4,000.00
Sudbury Neighbourhood Centre - Enhancing our service	The aim of this project is to purchase a new Combi-Oven for our kitchen, to replace the existing one which is now outdated and beginning to fail.	Sudbury Town Neighbourhood Forum	£9,921.00	£0
		<b>Totals:</b>	<b>£3,007,668.18</b>	<b>£557,151.88</b>



### Appendix 3 – S106 Projects Allocated Money in 2021/22 and their Spend

**Table 1 - S106 Infrastructure Projects Allocated Money in 2021/22 and Their Spend**

<b>Project Type</b>	<b>Project</b>	<b>S106 Allocated</b>	<b>S106 Spent</b>	<b>Expected Completion</b>	<b>Ward</b>
Capital Programme	Roe Green Kitchen Improvement Project	£413,154.19	£63,899.96	In progress, expected final completion: Q3 2022/23	Queensbury
Landscape	Kilburn Lane Trees	£12,000.00	£7,590.00	In progress, expected final completion: Q4 2022/23	Kilburn
Parks	Gladstone Park Restoration	£1,755.00	£0	In progress, expected final completion: Q3 2022/23	Dollis Hill
Parks	Monks Park & Sherrin's Farm Play Equipment	£190,000.00	£0	In progress, expected final completion: Q3 2022/23	Tokyngton
Parks	Woodcock Park Improvements	£25,810.31	£0	In progress, expected final completion: Q3 2022/23	Kenton
South Kilburn Regeneration	Carlton Vale Boulevard Trees	£305,273.73	£0	In progress, expected final completion: Q4 2022/23	Kilburn
Transport	Borough Wide Station Cycle Parking	£12,960.00	£0	In progress, expected final completion: Q3 2022/23	Borough Wide
Transport	Electric Vehicle Charging Points - Phase 3	£100,000.00	£100,000.00	<b>Completed</b>	Borough Wide
Transport	Legible London Signs around Wembley Stadium	£27,263.79	£27,263.79	<b>Completed</b>	Tokyngton
Transport	Roe Green / Kingsbury Road Signal Junction	£253,200.00	£0	In progress, expected final completion: 2023/24	Fryent & Queensbury
Transport	Hostile Vehicle Mitigation (HVM)	£2,513,757.94	£2,391,921.83	In progress, expected final completion: Q4 2022/23	Tokyngton
Transport	Wembley Two Way Working - Phase 2	£501,991.63	£0	In progress, expected final completion: 2023/24	Tokyngton
	<b>Totals:</b>	<b>£4,357,166.59</b>	<b>£2,590,675.58</b>		

**Table 2 - S106 Non-Infrastructure Projects Allocated Money in 2021/22 and their Spend**

<b>Project Type</b>	<b>Project</b>	<b>S106 Allocated</b>	<b>S106 Spent</b>	<b>Expected Completion</b>	<b>Ward</b>
Culture	Women's Euros Art Wembley	£19,161.45	£0	<b>Completed</b>	Tokyington
Employment & Skills	Brent Work Employment Brokerage Support	£84,939.74	£0	In progress, expected final completion: Q4 2022/23	Borough Wide
South Kilburn Regeneration	Community Provision for users of the Carlton and Granville Centres	£39,335.45	£0	In progress, expected final completion: Q2 2022/23	Kilburn
Regeneration	Affordable Workspace 10-11 Watkin Road	£300,000.00	£0	In progress, expected final completion: Q4 2022/23	Tokyington
Transport	Albion Way CPZ	£60,183.49	£0	In progress, expected final completion: Q4 2022/23	Tokyington
Transport	Beresford Avenue & Mount Pleasant CPZ	£89,221.08	£0	In progress, expected final completion: Q4 2022/23	Alperton
Transport	Empire Way Car Club	£11,411.56	£0	In progress, expected final completion: Q4 2022/23	Tokyington
Transport	Deerhurst Road CPZ	£25,474.56	£0	In progress, expected final completion: Q2 2022/23	Brondesbury Park
	<b>Totals:</b>	<b>£629,727.33</b>	<b>£0</b>		

**Infrastructure Planning Team**

London Borough of Brent

Brent Civic Centre

Engineers Way

Wembley Park

Wembley, London

HA9 0FJ

**Email: [CILadmin@brent.gov.uk](mailto:CILadmin@brent.gov.uk)**