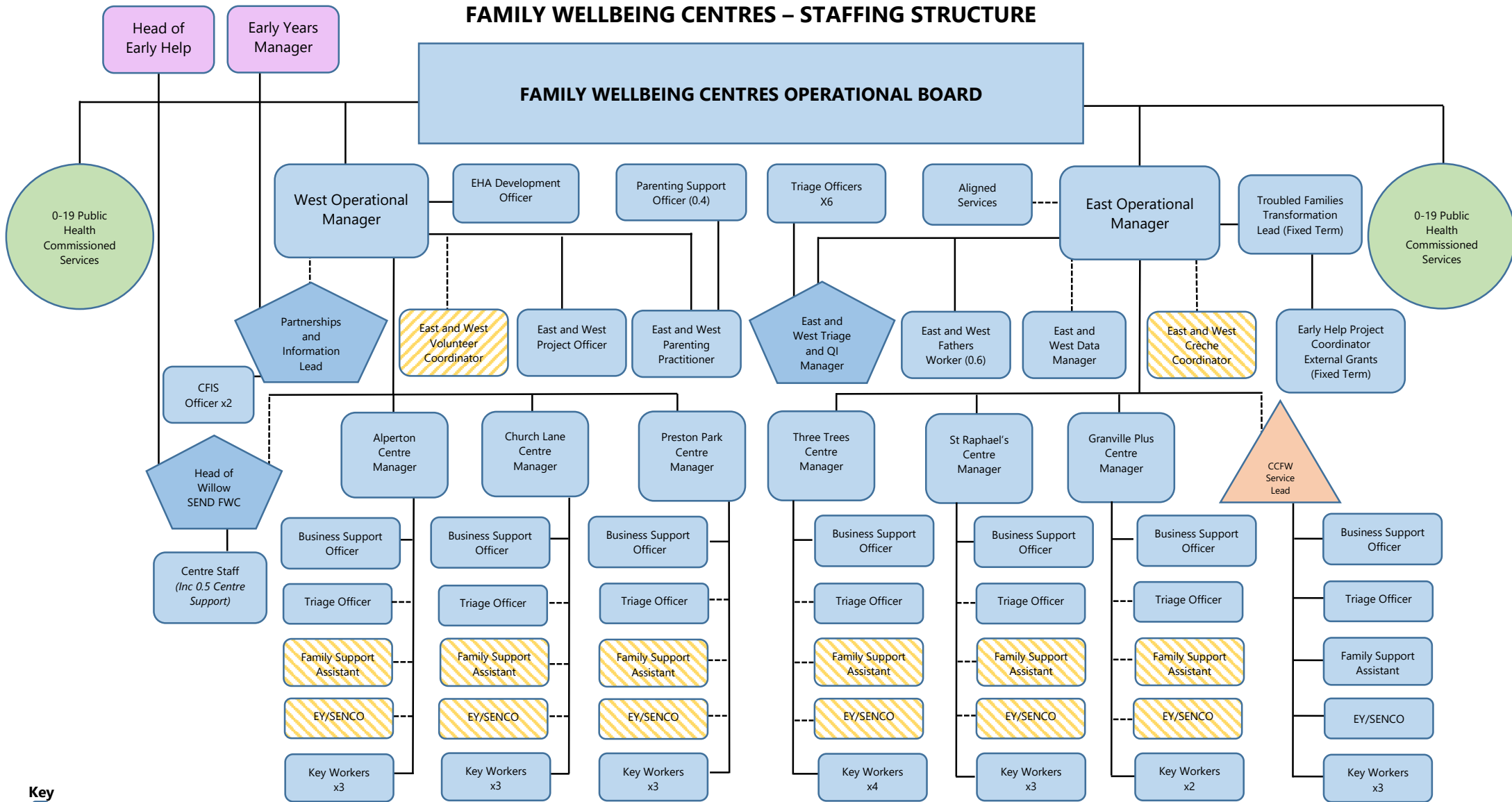


FAMILY WELLBEING CENTRES – STAFFING STRUCTURE



Key

- Not part of structure – matrix managed
- Brent Council Early Help or Children's Centre funded post
- Brent Council Public Health funded post
- Brent Council Early Years funded post
- Curzon Crescent and Fawood Federation funded and managed
- Voluntary Sector

Note:

Key Workers and FSA's will have clinical supervision with an appropriate manager / their Centre Manager if qualified to do so or a suitably qualified senior manager. Triage Officers will have case supervision with the Triage and QI Manager.

Note:

Centre Managers will have supervision with the Early Help Operational Manager and case management supervision with Family Solutions Service Manager