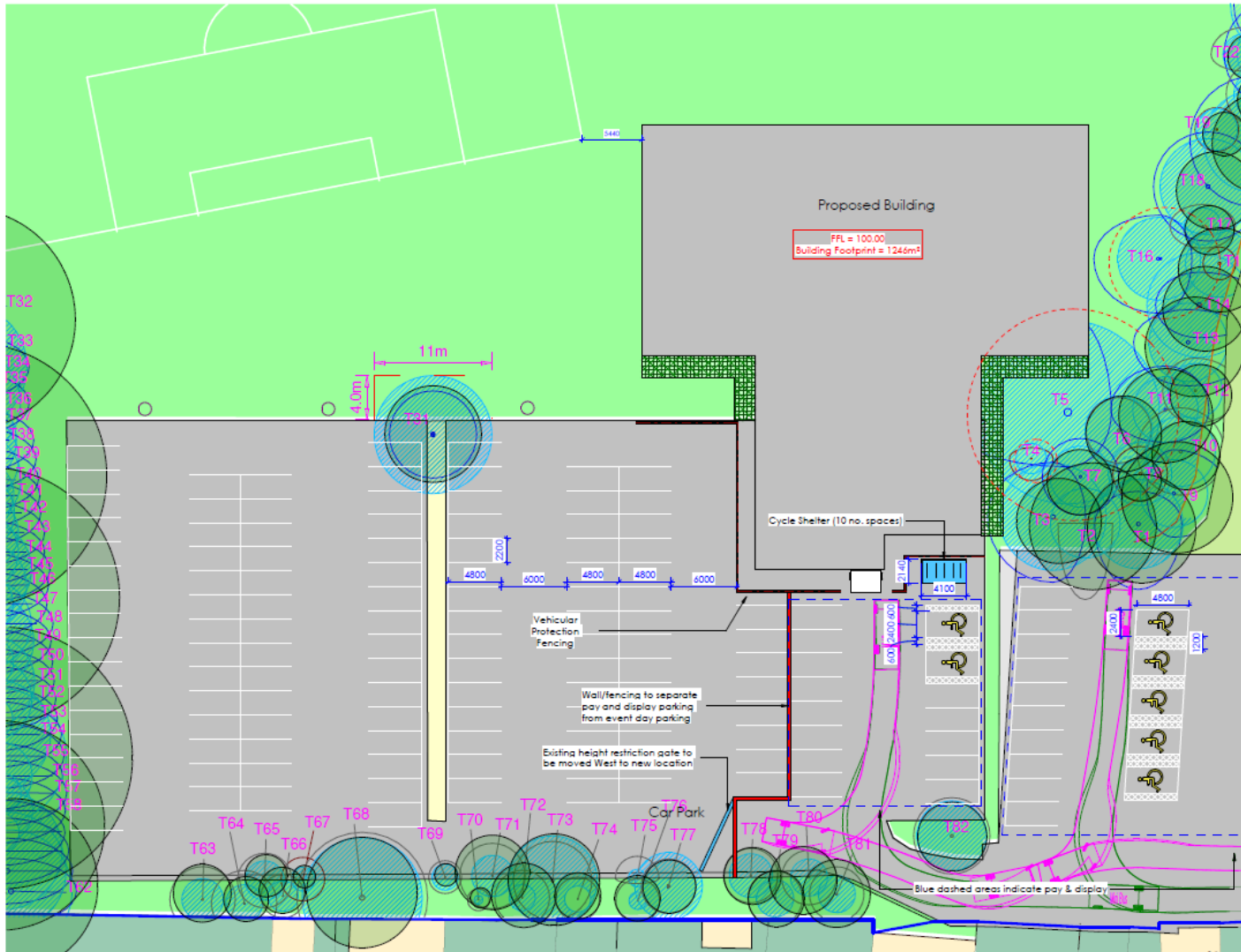
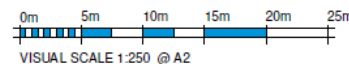


Appendix 2 – Proposed location of new development

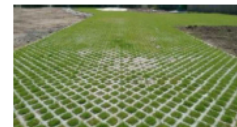


Car Park Layout
1 : 250



Car Park
The existing car park currently caters for 166 No. car parking bays, including disabled car parking bays to the higher tier.
The proposed development will result in a total of 148 No. car parking bays (disabled car parking bays untouched). The proposal will result in a loss of 18 car parking spaces (as shown adjacent).

- Key**
- Trees to be removed for development
 - Vehicular Protection (spec TBC)
 - Parking spaces to be removed
 - Forward direction minibus parking
 - Reverse direction minibus parking
 - Proposed 40mm Light duty grass paver, Please see example image below



Rev	Description	By	Chk	Date
P1	Submission for planning	LJ	JG	20/06/18
P2	Updated Car Park Layout as per markup	CR	JG	24/01/19
P3	Added minibus vehicle tracker paths	CR	JG	06/02/19
P4	Updated Car Park Layout as per markup	OD	JG	14/07/20

ALL DIMENSIONS ARE IN MILLIMETRES UNLESS OTHERWISE NOTED. DO NOT SCALE OFF DRAWINGS. ALL DIMENSIONS ARE NOMINAL AND MUST BE CHECKED ON SITE. ALL DRAWINGS ARE COPYRIGHT OF DARWIN GROUP LTD AND CANNOT BE REPRODUCED WITHOUT WRITTEN CONSENT OF DARWIN GROUP LTD.
IF THERE ARE ANY DISCREPANCIES WITH ANY INFORMATION PROVIDED, IT IS THE CONTRACTORS RESPONSIBILITY TO NOTIFY DARWIN GROUP LTD IMMEDIATELY.

DarwinGroup Construction Has Evolved
 London House, Shawbury Business Park, Shawbury, Shrewsbury, Shropshire, SY4 4BA
 Design — Engineering — Contracting — Office — Plant Works www.darwingroup.co.uk TEL 01939 352000

PROJECT TITLE	ADDRESS
Tentenden Sports Hall	Harrow, HA3 0GG

DRAWING TITLE
Proposed Car Park Layout

DRAWING REFERENCE

180053	DGL	XX	XX	DR	A	1145
--------	-----	----	----	----	---	------

PROJECT	CREATOR	VOLUME	SPAL	TYPE	DATE	REVISION
07/11/18	LJ	JG	1148	m²		

SUITABILITY	SCALE	SHEET	REV
S2 For Information	As indicated	A2	P4

14/07/2020 11:07:14