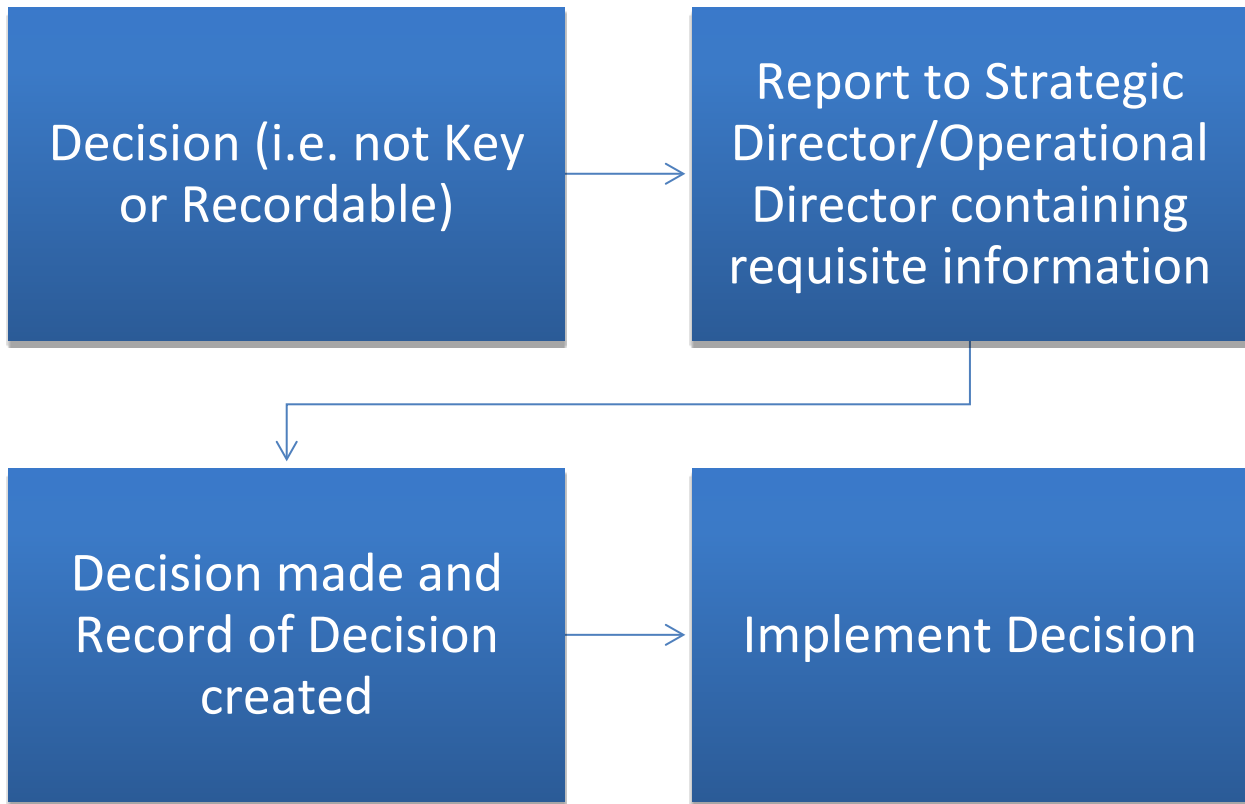


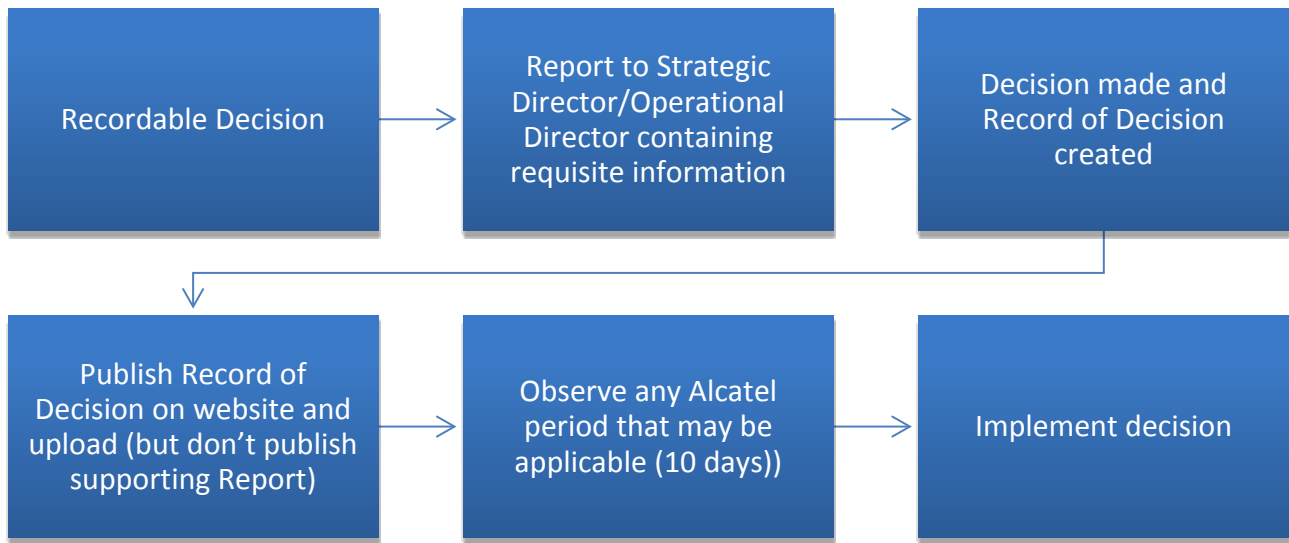
APPENDIX 1

CONTRACT DECISION MAKING

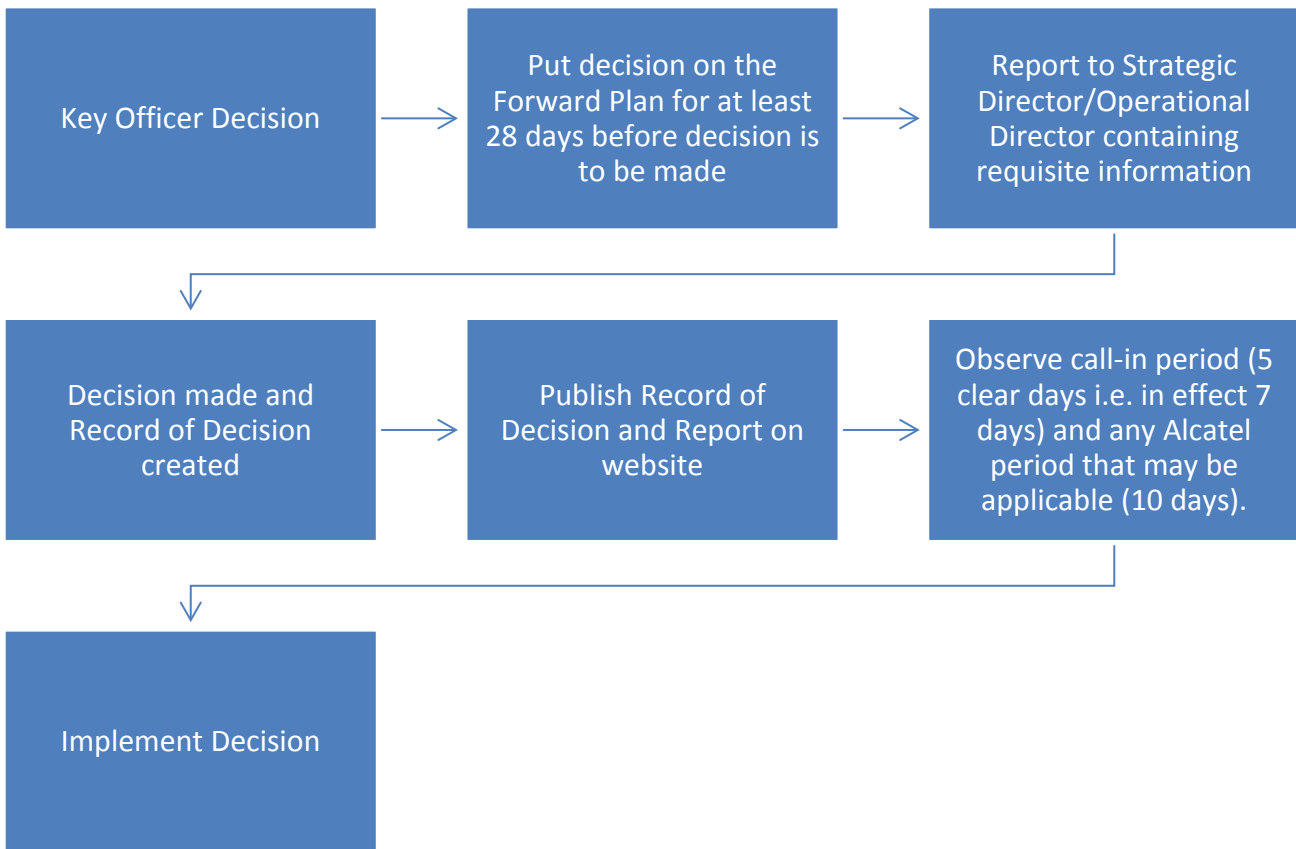
Estimated Value is less than £250,000



Estimated Value between £250k - £500k



**Estimated value for Services and Supplies – from £500k to £2M;
and for Works from £500k to £5M**



Estimated value for Services and Supplies - £2M and over; and for Works - £5M and over (or where Decision is particularly significant or controversial)

