



## **Appendix 3**

# **Profiles of Brent Children's Centres March 2019**

**Curzon Crescent Children's Centre**  
Curzon Crescent, Willesden  
NW10 9SD

**Fawood Children's Centre**  
Fawood Avenue, Harlesden  
NW10 8DX

**Challenge House Children's Centre**  
1-2 Bank Building, High Street  
NW10 4LX

Fawood and Curzon Crescent Children's Centres are managed by the The Fawood and Curzon Crescent Federation and are based within the two maintained community nursery schools. Children's Centres were built as part of an integrated school build. Challenge House Children's Centre was also part of the federation but due to reaching end the lease this centre closed 19/07/19. Statutory consultation took place regarding the closure and services from Challenge House and were relocated to Fawood Children's Centre and a nearby church hall.

Date of opening Curzon Crescent: 24/03/2006, Fawood: 01/02/2005, Challenge House: 30/09/2009, date of closure 19/07/19.

#### **Curzon Crescent Nursery School and Children's Centre**



#### **Fawood Nursery School and Children's Centre**



#### **Challenge House Children's Centre**



## Facilities

Facilities	Curzon Crescent	Fawood
No of floors	2	3 (divided across 3 floors)
Training room	1 (can be divided into 2)	1 (can be divided into 2)
Play room / Group room	1	1
Office space	Yes	Yes
Outside space	Yes	Yes
Disabled access	Yes	Yes
Storage	Yes	Yes
Parking	Street parking	Street parking
Kitchen	Yes	Yes
Clinic room (fitted to health regulations)	Yes	Yes
Other	2 consultation rooms	2 small meeting rooms

## Services Offered

- For activities being delivered please see Annexe A

## Capital

- Sure Start Capital Curzon Crescent: £290,020.72  
Fawood: £220,465

## Costs

- Funding is given to the federation and they allocate it accordingly for the children's centre services and quarterly FIN1 returns are sent to council.

## IT

- The centre runs on a school IT network and does not have the Brent IT system in place.

## Current status of building management

- Responsibility of the Governing Board.

## SLA / MoU Key Points

- 5 year agreement between council and governing body commencing from 01/07/15 and ending 30/03/20.
- Building works required by the centre is the responsibility of the council.

## Additional staff based or hot desk from site

- SALT staff, once a week for a whole day at both Curzon and Fawood.
- Midwives and Health Visitors weekly from Curzon utilising the dedicated consultation space.

## Data

Children's Centre	30% Index of Multiple Deprivation as a % of CC catchment area	Under 5 population	Targeted under 5 population
Curzon Crescent Children's Centre	100	1,529	763
Fawood and Challenge House Children's Centres	75	1,907	751

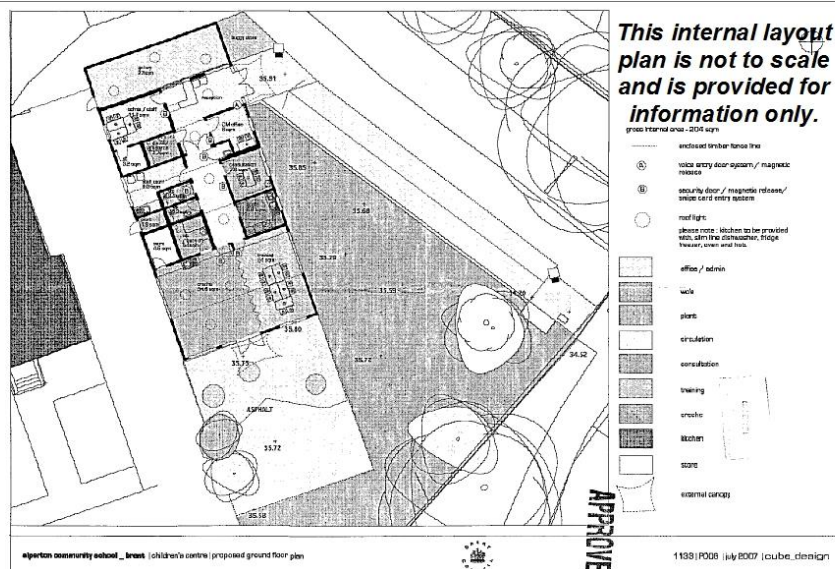
**Alperton Children's Centre,  
Ealing Road, Wembley, HA0 4PW**

Alperton is a separate building built by the council based on the site of Alperton Community School (Academy) with its own separate entrance and is open Monday – Friday, with occasional weekend use, for 50 weeks of the year. Date of opening: 07/03/2008.

**Outside**



**Floorplan**



**Total Floor Space – Approx. 218 sq.m**

## Facilities

Facilities	
No of floors	1
Training room	1
Play room / Group room	1
Office space	Yes
Outside space	Yes + play equipment
Disabled access	Yes
Storage	Yes
Parking	One shared disabled parking space in front of school
Kitchen	Fully fitted kitchen, tea / coffee bar within group room
Clinic Room (fitted to health regulations)	Yes

## Services Offered

- For activities being delivered please see Annexe A

## Capital

- Sure Start capital: Approx. £850,000

## Costs

- Total running costs:
  - Rates, Utilities (electricity, gas and water), approx. £9,450.00
  - Security, general maintenance, ground maintenance and cleaning, approx. £8,000 - £15,000
  - Insurance currently covered by the council

## IT

- The centre IT runs on the Brent network, with Brent IT facilities and phone line.

## Current status of building management

- Responsibility of Alperton School Governing Board, ensuring it is maintained in a clean state and that minor routine repairs and maintenance are undertaken.
- 12.5 hours per week of general caretaking and 12.5 hours a week of cleaning services are provided through the school, this will include unlocking and locking of the site.
- School invoices the provider on a quarterly basis for utilities and site manager costs.
- Health and Safety checks of the site are the responsibility of the site manager.
- CSM is a key holder and will agree access with the Children's Centre team.

## SLA / MoU Key Points

- 5 year agreement with the school commencing from 01/09/15 and ending 31/08/20.
- School has no responsibility for the delivery or quality of the services delivered at the centre.
- Utilities (electricity and water) are from the school's supply with sub meters to the centre and recharged to the provider. Refuse and CCTV is included as part of the school with an additional 5% administration fee charged to the provider for each.
- Building works required by the centre is the responsibility of the council.

## Additional staff based or hot desk from site

- SALT staff, twice a week for a full day.
- Health Visitors twice weekly for a full day.

## Data

Children's Centre	30% Index of Multiple Deprivation as a % of CC catchment area	Under 5 population	Targeted under 5 population
Alperton Children's Centre	11	1,484	426



**Fryent Primary School, Church Lane, Kingsbury, NW9 8JD**

Church Lane Children's Centre is a standalone centre built by the council and is located on the Frynt Primary School site. The centre is open Monday – Friday, with occasional weekend use, 50 weeks of the year. Date of opening: 07/03/2008.

## Outside



## Floor Plan



**Total Floor Space – Approx. 229 sq.m**

## Facilities

Facilities	
No of floors	1
Training room	1
Play room / Group room	1
Office space	Yes
Outside space	Yes + play equipment
Disabled access	Yes
Parking	Street parking
Storage	Yes
Kitchen	Yes x 2
Clinic Room (fitted to health regulations)	Yes

## Services Offered

- For activities being delivered please see Annexe A

## Capital

- Sure Start Capital: £1,174,447.01

## Costs

- Total running costs:
  - Rates, Utilities (electricity, gas and water), approx. £7,507.50
  - Security, general maintenance, ground maintenance and cleaning, approx. £8,000 - £15,000
  - Insurance currently covered by the council

## IT

- The centre IT runs on the Brent network, with Brent IT facilities and phone line.

## Current status of building management

- Responsibility of Fryent School Governing Board, ensuring it is maintained in a clean state and that minor routine repairs and maintenance are undertaken.
- 10 hours per week of general caretaking and 10 hours a week of cleaning services are provided through the school and charged to the current provider.
- Locality Children's Centre Team responsible for locking and unlocking of the children's centre.
- School invoices provider on a quarterly basis for cost of utilities and site manager.
- Health and Safety checks of the site are the responsibility of the site manager.

## SLA / MoU Key Points

- 5 year agreement with the school commencing from 01/09/15 and ending 31/08/20.
- The centre is run as a hub and spoke model, with the centre being the hub and the spoke being Mount Stewart.
- School has no responsibility for the delivery or quality of the services delivered at the centre.
- Utilities (electricity and water) are from the school's supply with sub meters to the centre and recharged to the provider. Refuse and CCTV is included as part of the school with an additional 5% administration fee charged to the provider for each.
- Building works required by the centre is the responsibility of the council.

## Additional staff based or hot desk from site

- SALT staff, twice weekly for a full day.
- Midwives and Health Visitors twice weekly for a full day.

**Data**

<b>Children's Centre</b>	<b>30% Index of Multiple Deprivation as a % of CC catchment area</b>	<b>Under 5 population</b>	<b>Targeted under 5 population</b>
Church Lane and Mount Stewart Children's Centres	8	2,934	747



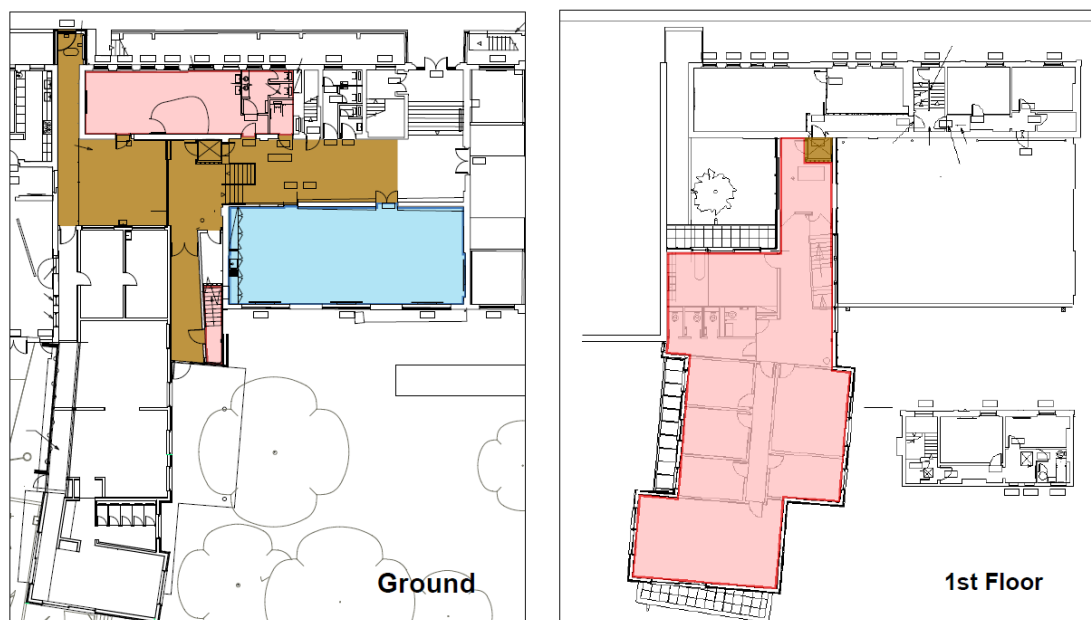
**Granville Plus Children's Centre**  
**Carlton Vale, Kilburn, NW6 5HE**

Granville Plus Children's Centre is located within the Granville Plus Centre with designated areas for the children's centre and is also adjoined to Granville Plus Nursery School. It is also the base for one of the locality Family Solutions teams. The centre is open Monday – Friday, with occasional weekend use, 50 weeks of the year. Date of opening: 31/01/2006. South Kilburn Trust are currently redeveloping the site which includes the children's centre, Early Help are involved to ensure that the redevelopment is suitable for the needs of a Family Hub. The Family Hub space will be complete by September 2020.

**Outside**



**Floorplan**



As part of the South Kilburn Trust taking over this building, the large hall (blue) was forfeited in exchange for adaptation of rooms in the children's centre to provide better facilities including a clinic room meeting health regulations.

**Total Floor Space – Approx 2109.1 sq.m (including the large hall)**

## Facilities

Facilities	
No of floors	2
Training room	2
Play room / Group room	1
Office space	Yes x 3
Outside space	Communal shared area to the front of the building
Disabled access	Yes
Storage	Yes
Parking	Street parking
Kitchen	Kitchenette area
Clinic room (fitted to health regulations)	Yes
Other	1 multipurpose room x 2 consultation room

## Services Offered

- For activities being delivered please see Annexe A

## Capital

- Sure Start Capital: £491,507.00

## Costs

- Total running costs:
  - Rates, Utilities (electricity, gas and water), approx. £17,850.00
  - Security, general maintenance, ground maintenance and cleaning, approx. £8,000 - £15,000
  - Insurance currently covered by the council.

## IT

- The centre IT runs on the Brent network, with Brent IT facilities and phone line.
- Health visiting and midwifery have installed connections to health IT systems.

## Current status of building management

- South Kilburn Trust / Brent Council are responsible for the building upkeep, maintenance and repair.

## Additional staff based or hot desk from site

- SALT staff, twice weekly for a full day.
- Midwives and Health Visitors twice weekly for a full day.
- Six full time Brent Family Solutions Team are based at site full time.

## Data

Children's Centre	30% Index of Multiple Deprivation as a % of CC catchment area	Under 5 population	Targeted under 5 population
Granville Plus Children's Centre	63	1,172	445

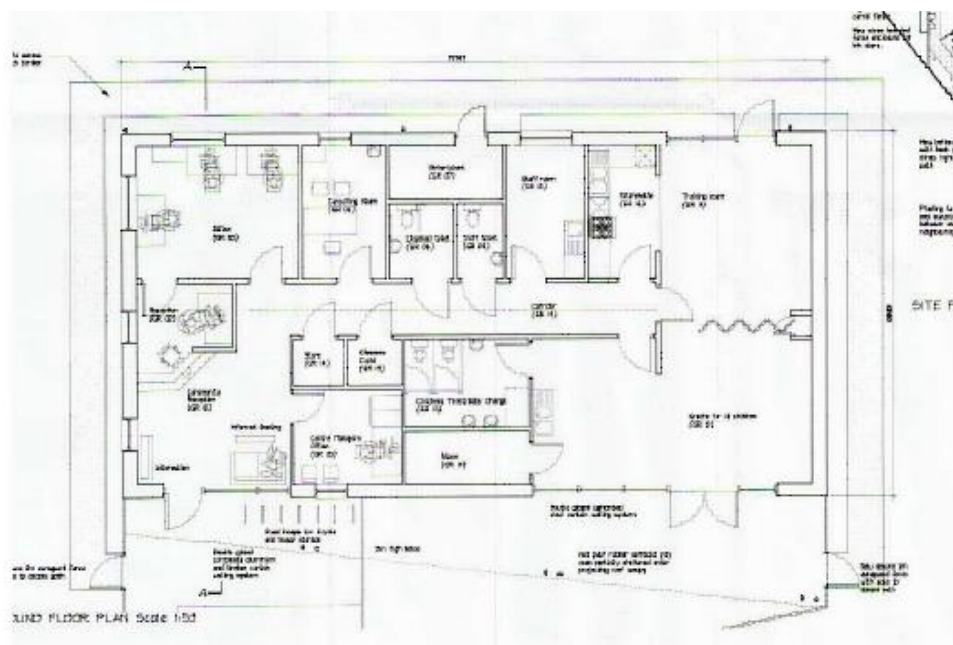
**Preston Park Children's Centre**  
**Preston Park Primary School, College Road, Wembley, HA9 8RJ**

Preston Park Children's Centre was built by the council and is located on the Preston Park Primary School site. This centre is open Monday - Friday for 50 weeks of the year. It is a shared facility with children's centre services delivered for 50% of the time and the School has access to the centre for the remaining half. Date of opening: 25/03/10.

**Outside**



**Floorplan**



**Total Floor Space – Approx. 176 sq.m**

## Facilities

Facilities	
No of floors	1
Training room	0
Play room / Group room	1
Office space	Yes
Outside space	Yes + play equipment
Disabled access	Yes
Parking	Street parking
Storage	Yes
Clinic room (fitted to health regulations)	Yes
Other	Consultation rooms x 2

## Services Offered

- For activities being delivered please see Annexe A

## Capital

- Sure Start Capital: £763,685.55

## Costs

- Total running costs:
  - Rates, Utilities (electricity, gas and water), approx. £17,199.00
  - Security, general maintenance, ground maintenance and cleaning, approx. £8,000 - £15,000
  - Insurance costs are currently covered by the council.

## IT

- The centre IT runs on the Brent network, with Brent IT facilities and phone line.

## Current status of building management

- Responsibility of Preston Park Primary School Governing Board, ensuring it is maintained, kept clean and that minor routine repairs and maintenance are undertaken.
- School invoices the provider on a quarterly basis for the cost of utilities with an additional 5% administrative charge.
- Health and Safety checks of the site are the responsibility of the site manager.

## SLA / MoU Key Points

- 5 year agreement with the school commencing from 01/09/15 and ending 31/08/20.
- The centre runs as a hub and spoke model, with the centre being the spoke and the hub is Wembley Primary.
- Shared use of facilities – Preston Park School has 50% of usage and the children's centre services the other 50%.
- School has no responsibility for the delivery or quality of the services delivered at the centre except those they deliver.
- Utilities (electricity and water) are from the school's supply with sub meters to the centre and recharged to the provider. Refuse and CCTV is included as part of the school with an additional 5% administration fee charged to the provider for each.
- Building works required by the centre is the responsibility of the council.

## Data

Children's Centre	30% Index of Multiple Deprivation as a % of CC catchment area	Under 5 population	Targeted under 5 population
Wembley Primary and Preston Park Children's Centres	10	2,558	733

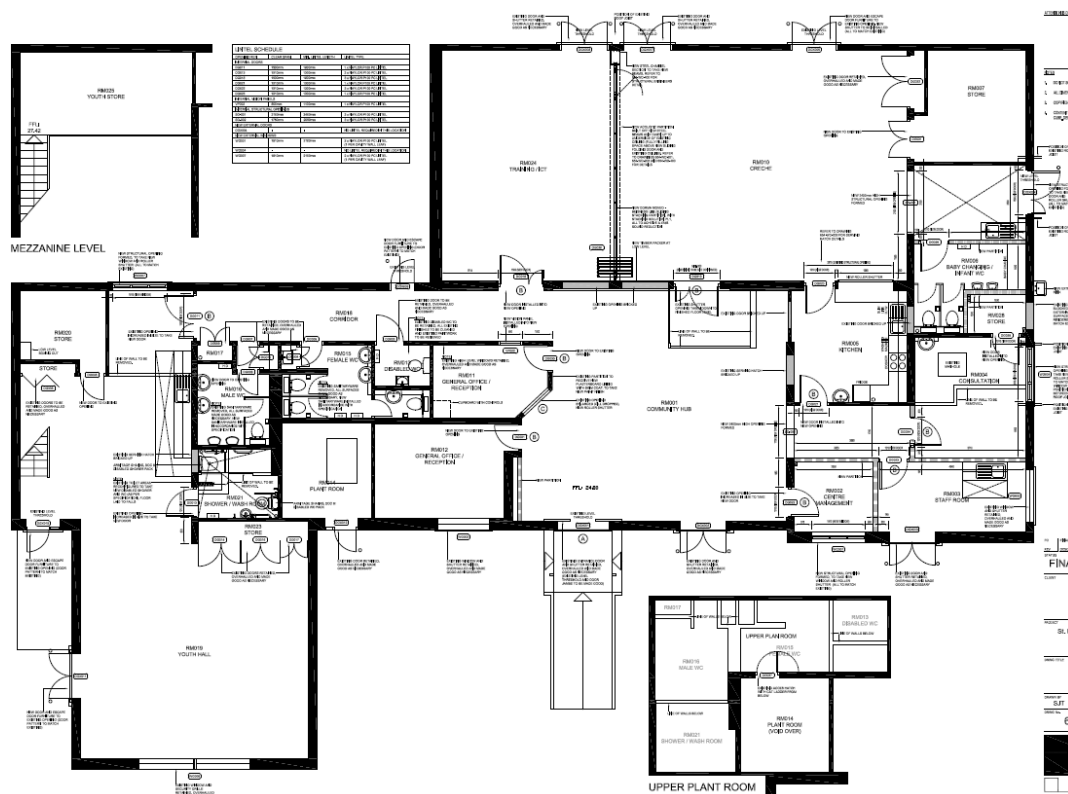
**St Raphael's Children's Centre**  
**The Community Centre, Rainborough Close, St Raphael's Estate, NW10 0TS**

St Raphael's Children's Centre was initially an intergenerational centre in the St Raphael's estate, it is open Monday – Friday, with occasional weekend use, for 50 weeks of the year. The site is also used during the weekends for community events. It is greatly valued by local people and at the time of designation as a children's centre there was a lot of local protest. Date of opening: 07/03/2010.

**Outside**



**Floorplan**



**Total Floor Space - Approx. 904 sq.m**



## Facilities

Facilities	
No of floors	1
Training room	1
Play room / Group room	1
Office space	Yes
Outside space	Yes – Back and sides + play equipment
Disabled access	Yes
Storage	Yes
Kitchen	Kitchen x 2
Clinic Room (fitted to health regulations)	Yes
Other	Community room currently used as NEG Nursery managed by current provider

## Services Offered

- For activities being delivered please see Annexe A

## Capital

- Sure Start Capital: £1,292,350.08

## Costs

- Total running costs:
  - Rates, Utilities (electricity, gas and water), approx. £21,556.50
  - Security, general maintenance, ground maintenance and cleaning, approx. £8,000 - £15,000
  - This site incurs an additional cleaning charge of approximately £10,000 due to the cleaning needs of the childcare provision on site
  - Insurance currently covered by the council.

## IT

- The centre IT runs on the Brent network, with Brent IT facilities and phone line.

## Current status of building management

- Building is fully managed by the current provider.

## Additional staff based or hot desk from site

- SALT staff, twice weekly for a full day.
- Health Visitors twice weekly for a full day.

## Data

Children's Centre	30% Index of Multiple Deprivation as a % of CC catchment area	Under 5 population	Targeted under 5 population
St Raphael's Community and Children's Centre	100	434	239



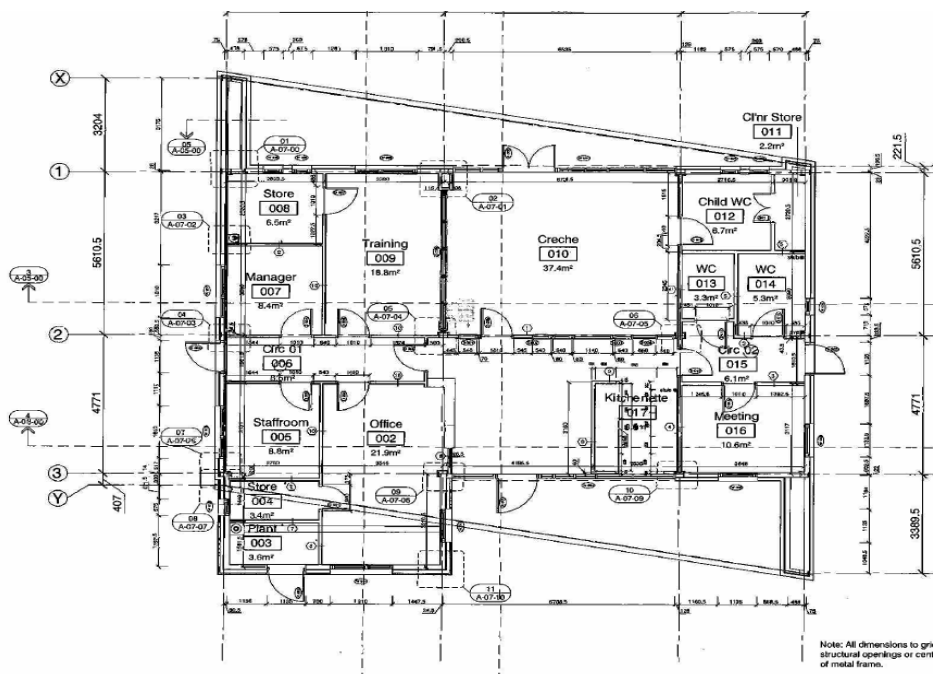
**Three Trees Children's Centre**  
**Tiverton Road, Kensal Rise, NW10 3HL**

Three Tree's Children's Centre is a standalone centre built by the council and is located on the site of Queen's Park Community School (Academy). The centre is open Monday – Friday delivering services for 50 weeks of the year. A separate legal agreement is in place for lease of the land. Date of opening: 07/03/2008.

**Outside**



**Floorplan**



**Total Floor Space – Approx. 151 sq.m**

## Facilities

Facilities	
No of floors	1
Training room	1
Play room / Group room	1
Office space	Yes
Outside space	Yes + play equipment
Disabled access	Yes
Storage	Yes
Parking	2 disabled bays outside the centre, street parking
Kitchen	Yes
Clinic room (fitted to health regulations)	Yes

## Services Offered

- For activities being delivered please see Annexe A

## Capital

- Sure Start Capital: £533,199.44

## Costs

- Total running costs:
  - Rates, Utilities (electricity, gas and water), approx. £17,850.00
  - Security, general maintenance, ground maintenance and cleaning, approx. £8,000 - £15,000
  - Insurance currently covered by the council.

## IT

- The centre IT runs on the Brent network, with Brent IT facilities and phone line.

## Current status of building management

- Responsibility of the council and the provider (care taking arrangements, maintenance, Health and Safety etc).
- Councils selected provider has overall responsibility of the centre but nominated school members are also key holders.

## Key Points

- Agreement with Queen's Park Community School Academy Trust commencing from 01/10/15 and ending 30/09/20.
- School has no responsibility for the delivery or quality of the services delivered at the centre.
- Utilities (electricity and water) are from the school's supply with sub meters to the centre and recharged to the provider. Refuse and CCTV is included as part of the school with an additional 5% administration fee charged to the provider for each.
- Building works required by the centre is the responsibility of the council.
- The centre IT runs on the Brent network, with Brent IT facilities and phone line.

## Additional staff based or hot desk from site

- SALT staff, once a week for a full day.
- Health Visitors twice weekly for a full day.
- Midwifery twice weekly for a full day.

**Data**

<b>Children's Centre</b>	<b>30% Index of Multiple Deprivation as a % of CC catchment area</b>	<b>Under 5 population</b>	<b>Targeted under 5 population</b>
Three Trees	27	2,761	711

**The Willow Children's Centre**  
**Barnhill Road, Wembley, HA9 9YP**

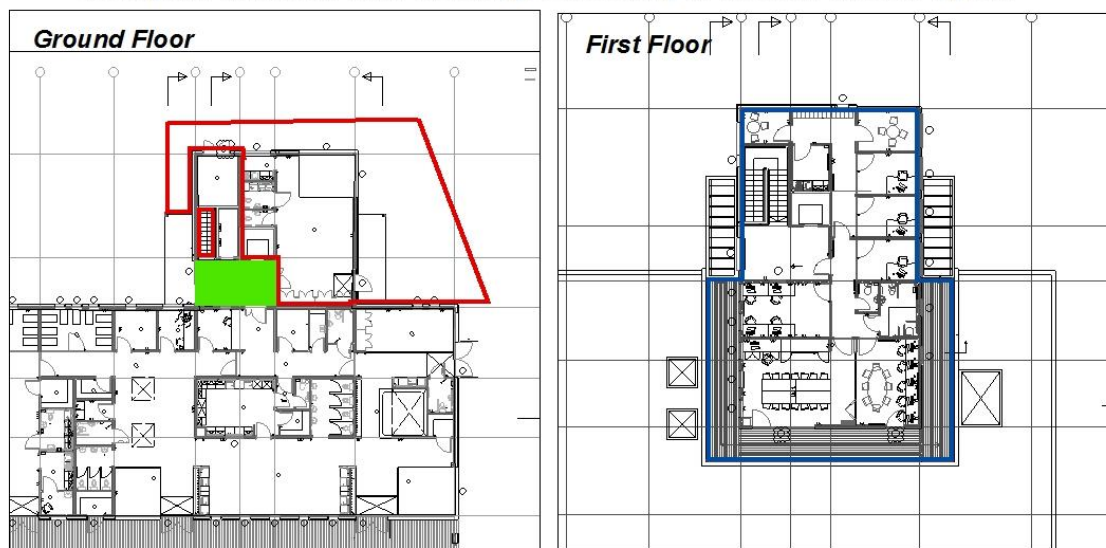
The Willow Children's Centre occupies 40% of the building and the Willow Nursery occupy the remaining 60%. The centre is open Monday-Friday, with occasional weekend use, for 50 weeks of the year. Date of opening: 06/02/2007.

**Outside**



**Floorplan**

**Inset plans are not to scale and are provided only to illustrate internal layout.**



**Total Floor Space – Approx. 332 sq.m**

## Facilities

Facilities	
No of floors	2
Training room	1
Play room	1
Office space	Yes
Outside space	Yes + play equipment
Disabled access	Yes
Parking	Disabled bay to the front of the centre
Storage	Yes
Kitchen	Yes
Clinic room	Yes – Consultation room may not have sink

## Services Offered

- For activities being delivered please see Annexe A

## Capital

- Sure Start Capital: £1,244,389.02

## Costs

- Total running costs:
  - Rates, Utilities (electricity, gas and water), approx. £16,275.00
  - Security, general maintenance, ground maintenance and cleaning, approx. £8,000 - £15,000
  - This site incurs an additional cleaning charge of approximately £10,000 due to the cleaning needs of the childcare provision on site
  - Insurance currently covered by the council
  - Council Nursery pays 60% of running costs and children's centre provider pay the remaining 40%.

## IT

- The centre IT runs on the Brent network, with Brent IT facilities and phone line.

## Current status of building management

- Responsibility of Brent council.

## Additional staff based or hot desk from site

- SALT staff, twice weekly for a full day.
- Health Visitors twice weekly for a full day.
- Midwifery twice weekly for a full day.

## Data

Children's Centre	30% Index of Multiple Deprivation as a % of CC catchment area	Under 5 population	Targeted under 5 population
Willow Children's Centre	43	1,083	306

**Welcome Children's Centre**  
116 Chaplin Road, London HA0 4UZ

**and Barham Park Building**  
Harrow Road, Sudbury, HA0 2HB

Welcome Children's Centre and Barham Park Building are run as a hub and spoke model. Welcome Children's Centre is based in the Wembley Centre for Health and Care. Welcome Children's Centre is a part time centre, opened 2-3 days a week. Barham Park is a full time centre, open for 3 days a week. Services run for 50 weeks of the year. Date of opening: 07/03/2008.

**Welcome Children's Centre**  
(Part of the building below)



**Barham Park Building**  
(Left hand ground floor wing)





## Facilities

Facilities	Welcome Children's Centre	Barham Park Building
No of floors	1	1
Training room / Family Room	1	1
Play room / Group room	1	1
Office space	Yes	No (small area in hallway)
Outside space	Yes + play equipment	No – situated in a large park
Disabled access	Yes	Yes
Storage	Yes	Yes
Parking	Health Centre carpark pay and display	Park carpark
Kitchen	Yes	Yes
Clinic Room (fitted to health regulations)	Yes	No

## Services Offered

- For activities being delivered please see Annexe A

## Capital

- Welcome – Adaptations and outside play area £11,040.60
- Barham Park: £423,223.74

## Costs

- Total running costs:
  - Rates, Utilities (electricity, gas and water), approx. £9,000
  - Security, general maintenance, ground maintenance and cleaning, approx. £8,000 - £15,000
  - Insurance currently covered by the council
  - Please note, the costs in relation to Welcome Children's Centre are minimal consisting of just the telephone line rental and calls.

## IT

- Welcome has a BT telephone line and Barham Park site has no connection, staff take a laptop and a mobile phone when delivering services at this site.

## Current status of building management

- Informal agreement with Health to jointly use the facilities and storage at Welcome
- No legal status and currently no rent is paid for Welcome and it is an NHS building. NHS building services are challenging this.
- Welcome and Barham Park are linked sites, DfE database shows Welcome is the main site with Barham being the satellite, however more capital has been put into Barham.
- Barham Park Building is owned and managed by the Barham Park Trust, supported by Brent Council. No formal lease document was produced.

## Data

Children's Centre	30% Index of Multiple Deprivation as a % of CC catchment area	Under 5 population	Targeted under 5 population
Welcome Children's Centre	20	2,931	871

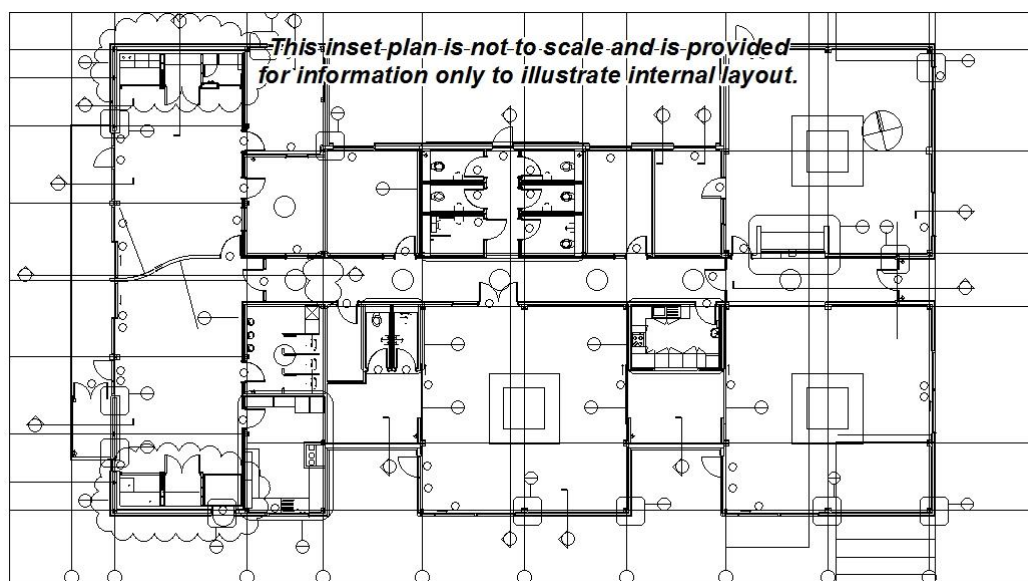
**Harmony Children's Centre**  
**38 Bridge Road, London, NW10 9BX**

Harmony Children's Centre is a standalone centre built by the council and is located near Mitchell Brook Primary School. It is also the base for one of the locality Family Solutions teams. The centre is open Monday – Friday, with occasional weekend use for 50 weeks of the year. There is a nursery provision within the centre with a separate entrance and outdoor provision. The nursery is part of Mitchell Brook Primary School and a memorandum of understanding is in place between the school and council. Date of opening: 24/03/2006.

**Outside**



**Floorplan**



## Facilities

Facilities	
No of floors	1
Training room	1
Play room / Group room	1
Office space	Yes – 1 managers office and 1 large office
Outside space	Yes + play equipment
Disabled access	Yes
Storage	Yes plus sheds
Parking	Street parking and small onsite carpark
Kitchen	Yes
Clinic room (fitted to health regulations)	Yes
Other	Consultation Room

## Services Offered

- For activities being delivered please see Annexe A

## Capital

- Sure Start Capital: £252,473.53

## Costs

- Total running costs:
  - Rates, Utilities (electricity, gas and water), approx. £31,164.00
  - Security, general maintenance, ground maintenance and cleaning, approx. £8,000 - £15,000
  - This site incurs an additional cleaning charge of approximately £10,000 due to the cleaning needs of the childcare provision.
  - Insurance currently covered by the council.

## IT

- The centre IT runs on the Brent network, with Brent IT facilities and phone line.

## Current status of building management

- Responsibility of the council and provider (, maintenance, Health and Safety etc.)
- School have responsibility of 40% of the building and costs.
- Councils selected provider has overall responsibility of the centre but nominated school members will also be key holders due to the nursery provision. An informal agreement is in place for the school care taker to open and close the building.

## SLA / MoU Key Points

- Nursery provision within Harmony is delivered by Mitchell Brook Primary School under a 5 year agreement commencing from 01/12/14 and ending 30/11/19 and they are responsible for this area.
- School pays approximately 40% of all costs for the nursery areas, shared areas such as the staff room and toilets and reception area are not charged.
- School has no responsibility for the delivery or quality of the services delivered at the centre.
- Utilities (electricity and water) are from the school's supply with sub meters to the centre and recharged to the provider. Refuse and CCTV is included as part of the schools with an additional 5% administration fee charged to the provider.
- Building works required by the centre is the responsibility of the council.

## Additional staff based or hot desk from site

- SALT staff, once a week for a full day.
- Health Visitors twice weekly for a full day.
- Midwifery three times a week for a full day.
- Seven Brent Family Solutions staff are based here full time.

Data

Children's Centre	30% Index of Multiple Deprivation as a % of CC catchment area	Under 5 population	Targeted under 5 population
Harmony Children's Centre	100	559	325

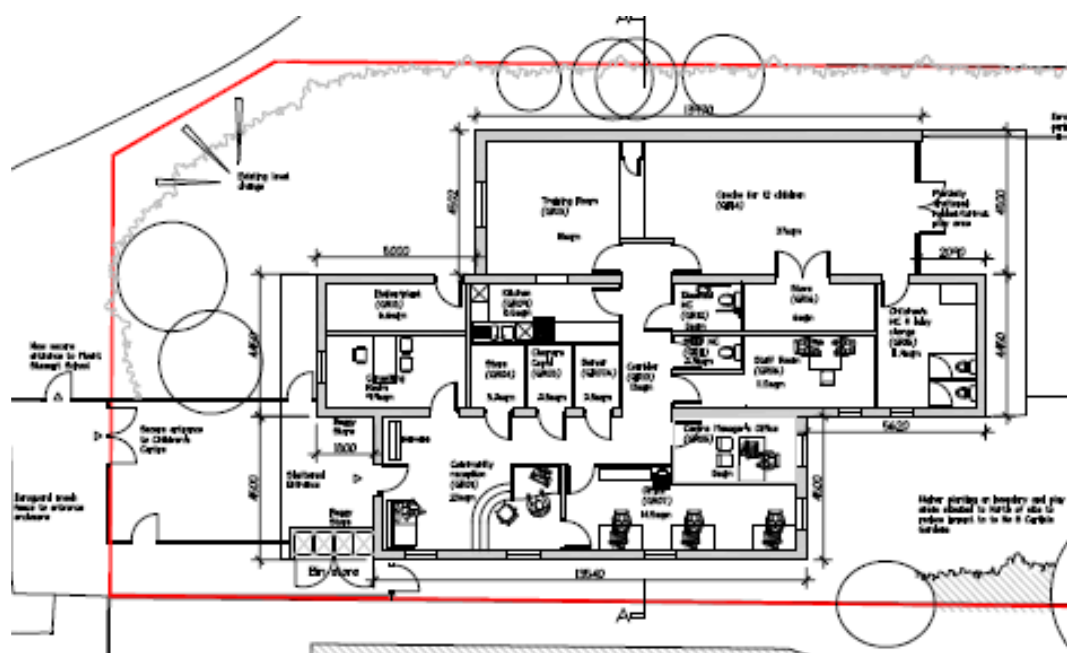
**Mount Stewart Infants School, Carlisle Gardens, Kenton, HA3 0JX**

Mount Stewart Children's Centre is a standalone centre built by the council and is located on the Mount Stewart Infant School site. The centre runs as part of hub and spoke model with Church Lane Children's Centre. The centre operates in the afternoon and the morning is used by the school for nursery provision. The centre is opened for 50 weeks of the year. Date of opening: 31/08/2010.

## Outside



## Floor Plan



**Total Floor Space – Approx. 191 sq.m**

## Facilities

Facilities	
No of floors	1
Training room	0
Play room / Group room	1
Office space	Yes
Outside space	Yes + play equipment
Disabled access	Yes
Storage	Yes
Parking	Street parking
Kitchen	Yes
Clinic Room	Yes

## Services Offered

- For activities being delivered please see Annexe A

## Capital

- Sure Start Capital: £808,352.39

## Costs

- Total running costs:
  - Rates, Utilities (electricity, gas and water), approx. £15,015.00
  - Security, general maintenance, ground maintenance and cleaning, approx. £8,000 - £15,000
  - Insurance currently covered by the council

## IT

- The centre IT runs on the Brent network, with Brent IT facilities and phone line.

## Current status of building management

- Responsibility of Mount Stewart School Governing Board, ensuring it is maintained in a clean state and that minor routine repairs and maintenance are undertaken.
- School invoices provider on a quarterly basis for the cost of utilities with an additional 5% administrative charge.
- Health and Safety checks of the site are the responsibility of the site manager.

## SLA / MoU Key Points

- 5 year agreement with the school commencing from 01/09/15 and ending 31/08/20.
- The centre is part of the hub and spoke model, with the centre being the spoke and the hub is Church Lane Children's Centre.
- Shared use of facilities - Mount Stewart School use the site in the morning for their nursery provision.
- The school has sole use of the area designated for a staff room and the centre has sole use of the clinical room, staff room and office within the centre.
- School has no responsibility for the delivery or quality of the services delivered at the centre except those they provide.
- Utilities (electricity and water) are from the school's supply with sub meters to the centre and recharged to the provider. Refuse and CCTV is included as part of the school with an additional 5% administration fee charged to the provider.
- Building works required by the centre is the responsibility of the council.

## Additional staff based or hot desk from site

- Health Visitors twice weekly for a half a day.
- Midwifery twice weekly for half a day.



**Data**

<b>Children's Centre</b>	<b>30% Index of Multiple Deprivation as a % of CC catchment area</b>	<b>Under 5 population</b>	<b>Targeted under 5 population</b>
Church Lane and Mount Stewart Children's Centres	8	2,934	747

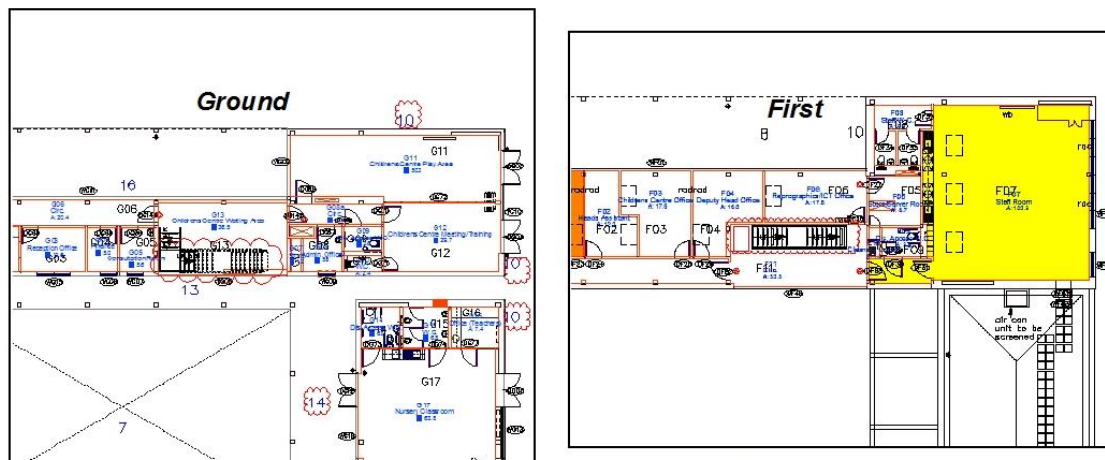
## Wembley Primary Children's Centre East Lane, Wembley, HA9 7NW

The children's centre was built as part of the integrated development on the school site and use of the centre is for the sole purpose of children's centre services. This centre is open Monday – Friday for 50 weeks of the year. There is a shared reception area and an upstairs office but rest of the centre is self-contained. Date of opening: 07/03/2008.

### Outside



### Floorplan



*These internal layout plans are not to scale and are provided for information only.*

**Total Floor Space – Approx. 152.1 sq.m**

## Facilities

Facilities	
No of floors	2 – Only office is upstairs
Training room	1
Play room / Group room	1
Office space	Yes
Outside space	Yes + play equipment
Disabled access	Yes
Storage	Yes
Parking	Street parking
Other	2 additional rooms
Kitchen	No but a prep area with limited facilities
Clinic room (fitted to health regulations)	Yes

## Services Offered

- For activities being delivered please see Annexe A

## Capital

- Sure Start Capital: Approx. £500,000

## Costs

- Total running costs:
  - Rates, Utilities (electricity, gas and water), approx. £8,599.50
  - Security, general maintenance, ground maintenance and cleaning, approx. £8,000 - £15,000
  - Insurance currently covered by the council.

## IT

- The centre IT runs on the Brent network, with Brent IT facilities and phone line.

## Current status of building management

- Responsibility of Wembley Primary School Governing Board, ensuring it is maintained, kept clean and that minor routine repairs and maintenance are undertaken.
- School invoices provider on a quarterly basis for cost of utilities with an additional 5% administrative charge.
- Health and Safety checks of the site are the responsibility of the site manager.
- Locking and unlocking of the premises is the responsibility of the school.

## SLA / MoU Key Points

- 5 year agreement with the school commencing from 01/09/15 and ending 31/08/20.
- The centre runs as a hub and spoke model, with the centre being the hub and the spoke is Preston Park Children's Centre.
- Shared use of facilities – reception area, staff room and office.
- No children's centre staff are key holders at the request of the headteacher.
- School has no responsibility for the delivery or quality of the services delivered at the centre.
- Utilities (electricity and water) are from the school's supply with sub meters to the centre and recharged to the provider. Refuse and CCTV is included as part of the school with an additional 5% administration fee charged to the provider.
- Building works required by the centre is the responsibility of the council.

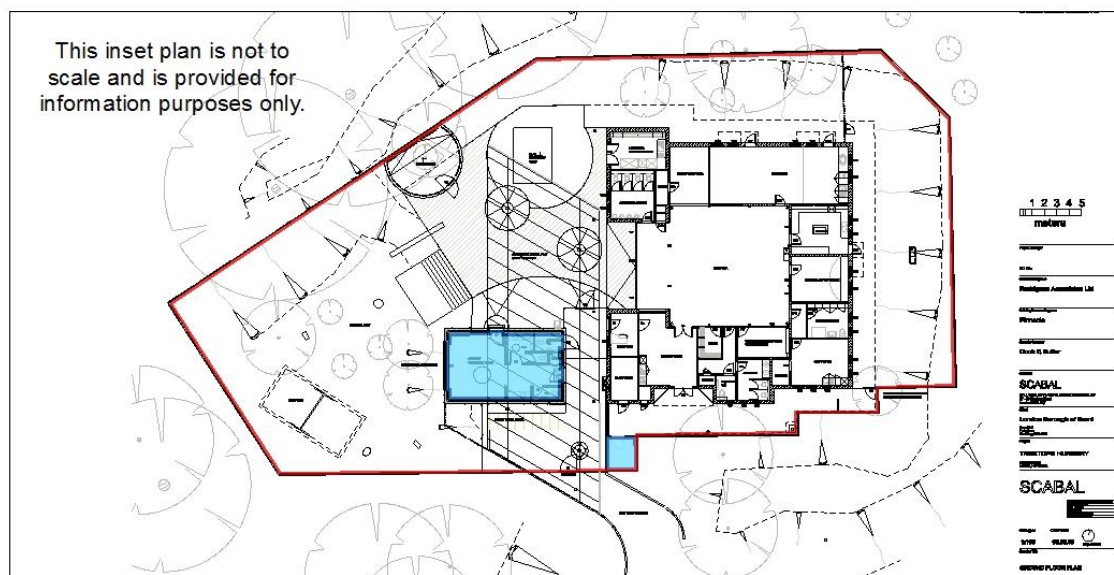
## Data

Children's Centre	30% Index of Multiple Deprivation as a % of CC catchment area	Under 5 population	Targeted under 5 population
Wembley Primary and Preston Park Children's Centres	10	2,558	733

**Treetops Children's Centre**  
**Doyle Gardens, Willesden, NW10 3HL**

Treetops is a part time children's centre and services are delivered some evenings and occasionally at weekends. The space is used for a nursery provision Monday – Friday. Date of opening: 18/03/2009.

### Floorplan



**Total Floor Space** – Approx. 364.8 sq.m

### Facilities and Services

Facilities	
No of floors	1
Training room	1
Play room / Group room	1
Office space	0
Outside space	Yes + play equipment
Disabled access	Yes
Storage	Yes – Shed
Other	n/a

### Costs

- All costs are covered by the nursery leasing the building.

### Capital

- Sure Start Capital: £645,193.05

### Current status of building management

- Managed by the nursery provider. Lease between council (property services) and SAI (private nursery provider).
- The centre runs a hub and spoke model, with the centre being the spoke and the hub being Wykeham Children's Centre.

### Data

Children's Centre	30% Index of Multiple Deprivation as a % of CC catchment area	Under 5 population	Targeted under 5 population
Treetops and Wykeham Children's Centres	59	3,745	1,318

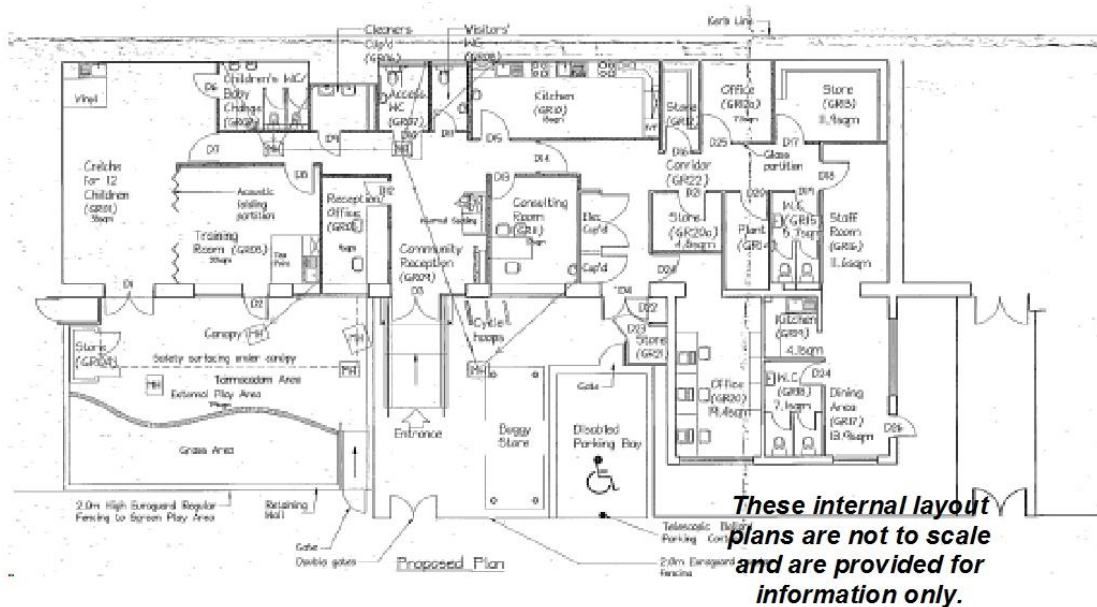
## Wykeham Children's Centre Annesley Close, Neasden, N10 0ES

Wykeham Children's Centre is integrated within Wykeham Primary School and has its own separate entrance. The centre is open Monday – Friday, with occasional weekend use, for 50 weeks of the year. The Family Solutions locality team also use this centre as a base for 2-3 days a week. Date of opening: 25/03/2010.

### Outside



### Floorplan



Total floor space – Approx. 235 sq.m

## Facilities

Facilities	
No of floors	1
Training room	1
Play room / Group room	1
Office space	Yes
Outside space	Yes + play equipment
Disabled access	Yes
Storage	Yes
Parking	Street parking
Kitchen	Yes
Clinic room (fitted to health regulations)	Yes

## Services Offered

- For activities being delivered please see Annexe A

## Capital

- Sure Start Capital: £504,327.39

## Costs

- Total running costs:
  - Rates, Utilities (electricity, gas and water), approx. £9,633.75
  - Security, general maintenance, ground maintenance and cleaning, approx. £8,000 - £15,000
  - Insurance currently covered by the council.

## IT

- The centre IT runs on the Brent network, with Brent IT facilities and phone line.

## Current status of building management

- Responsibility of the council, ensuring it is maintained in a clean state and that minor routine repairs and maintenance are undertaken.
- Council provides caretaker and cleaning services.
- School invoices the provider on a termly basis for the cost of utilities with an additional 5% administrative charge.
- Health and Safety checks of the site are the responsibility of the provider.

## SLA / MoU Key Points

- 5 year agreement with the school commencing from 01/09/15 and ending 31/08/20.
- The centre runs a hub and spoke model, with the centre being the hub and the spoke being Tree Tops Children's Centre.
- School has no responsibility for the delivery or quality of the services delivered at the centre.
- Utilities (electricity and water) are from the school's supply with sub meters to the centre and recharged to the provider. Refuse and CCTV is included as part of the school with an additional 5% administration fee charged to the provider.
- Building works required by the centre is the responsibility of the council.

## Additional staff based or hot desk from site

- SALT staff, twice weekly for a full day.
- Health Visitors twice weekly for a full day.
- Midwifery twice weekly for a full day.
- Two part time Family Solutions team members are based here.



**Data**

<b>Children's Centre</b>	<b>30% Index of Multiple Deprivation as a % of CC catchment area</b>	<b>Under 5 population</b>	<b>Targeted under 5 population</b>
Treetops and Wykeham Children's Centres	59	3,745	1,318

**Hope Children's Centre**  
**228 Walm Lane, London, Middlesex, NW2 3BS**

Hope Children's Centre was delivered from space leased from Norwood, a charity that operates in north west London. Norwood advised Brent Council that they will not renew the lease and after 10 years of Children's Centre services being delivered from this site, it closed mid-summer 2018. Statutory consultation took place regarding the closure and services from Hope were relocated to Granville Plus and Three Trees Children's Centre. The centre opened on 31/08/2009 and closed 01/08/2018.

**Data**

<b>Children's Centre</b>	<b>30% Index of Multiple Deprivation as a % of CC catchment area</b>	<b>Under 5 population</b>	<b>Targeted under 5 population</b>
Hope Children's Centre (shared with Three Trees)	27	2,761	711

### **Approximate running costs of current children's centre sites for 2019-20**

All figures detailed below are approximations.

Security, general maintenance, ground maintenance and cleaning is estimated to be approximately £8,000-£15,000 per site and is not included in the totals below. There is also an additional amount of approximately £10,000 for cleaning that applies to centres which have childcare provision on site and this is marked with an \*.

	Telephone	Electricity	Gas	Water Charges	Business Rates	Estimated total running costs for year (excluding all maintenance costs)
<b>Alperton</b>		2100.00	3150.00	1575.00	2625.00	<b>£9,450.00</b>
<b>Welcome **</b>	450.00	2100.00	3150.00	1575.00	2625.00	<b>£9,900.00</b>
<b>Harmony *</b>		6825.00	5775.00	1050.00	17514.00	<b>£31,164.00</b>
<b>St. Raphael's *</b>		6825.00	6121.50	1050.00	7560.00	<b>£21,556.50</b>
<b>Church Lane</b>		1575.00	2362.50	787.50	2782.50	<b>£7,507.50</b>
<b>Mount Stewart</b>		3150.00	4725.00	1575.00	5565.00	<b>£15,015.00</b>
<b>Preston Park</b>		3150.00	4725.00	1575.00	7749.00	<b>£17,199.00</b>
<b>Wembley Primary</b>		1575.00	2362.50	787.50	3874.50	<b>£8,599.50</b>
<b>Willow *</b>		3150.00	2100.00	1050.00	9975.00	<b>£16,275.00</b>
<b>Granville Plus</b>		4200.00	6300.00	2100.00	5250.00	<b>£17,850.00</b>
<b>Three Trees</b>		4200.00	6300.00	2100.00	5250.00	<b>£17,850.00</b>
<b>Wykeham</b>		1575.00	2362.50	446.25	5250.00	<b>£9,633.75</b>
<b>Tree Tops</b>	<i>All costs are covered by the nursery leasing the building as part of the agreement.</i>					
<b>Curzon Crescent</b>	<i>The costs for the Curzon Crescent and Fawood Partnership is incorporated into the school costs as part of their quarterly funding. These amounts will be available at a later date.</i>					
<b>Fawood</b>						

\*\*Note, the costs regarding Welcome Children's Centre include the linked site, Barham Park Building.

### **NB:**

Business rates are reduced to 10% if the provider is a registered charity.

For premises that are used for SEND provision an application for a full exemption can be agreed.

School managed buildings have different business rates and this explains some of the variations.

## Annexe A – Activities currently being delivered in children's centres

Brent Children's Centres: Grange Cluster Timetable: Spring Term 2019										Last updated: 11th February 2019	
Centre Name	Monday		Tuesday		Wednesday		Thursday		Friday		Saturday
	AM	PM	AM	PM	AM	PM	AM	PM	AM	PM	
<b>Granville Children's Centre, Carlton Vale, Kilburn, NW6 5HE. 0208 937 6581</b>	9.30 - 4.00: Citizens Advice Brent (by appointment only) 0-5 years	9.00 - 4.00: Midwifery Perinatal Clinic (by appointment only) for 10.00 - 4.00: Health Visiting Postnatal Clinic (by appointment only)	9.00 - 4.00: Midwifery Postnatal Clinic (by appointment only) for parents/carers and new born babies	1.30 - 4.00: Health Visiting 1 & 2 year reviews (by appointment only) 1.30 - 3.00: Breastfeeding Support and Advice (Drop - in)	9.30 - 12.00: Health Visiting 1 & 2 year reviews (by appointment only) 9.30 - 11.30: Childminders' Sessions 0-5 years	1.30 - 3.00: Well Baby Clinic (Drop In) 0-5 years	9.00 - 5.00: Midwifery Antenatal Clinic (by appointment only) for expectant parents 10.00 - 1.00: Strengthening Families, Strengthening Communities, 13 week parenting programme. Starts 17th January.	1.00 - 2.00: Story and Rhyme Time 13 months + Starts 1st, 2nd and 3rd week of the month. Booking required. £1 voluntary contribution.	10.00 - 11.00 or 11.15 - 12.15: Baby Massage 6 weeks to crawling, 5 week course. (Booking required) £12	10.00 - 2.30: First Aid. Please call the Children's Centre for date and time. (booking required) CRECHE AVAILABLE.	
	09.30 - 12.00: ESOL 0-5 years. (Booking required) CRECHE AVAILABLE.	2.00 - 3.00: Let's Talk 0-5 years	10.00 - 11.00: Stay, Play and Learn: Little Explorers (0-12 months). Sensory sessions for babies. £1 voluntary	1.30 - 3.00: Stay, Play and Learn with Messy Play 13 months+. £1 voluntary contribution.	9.30 - 12.30: Health Visiting Postnatal Clinic (by appointment only)	1.30 - 2.45: Busy Feet 18 months+. 19th January to 13th February. £1 voluntary contribution.	10.00 - 4.00: Health Visiting 1 & 2 year Reviews (by appointment only)	1.30 - 3.00: Family Focus. Last Thursday of the month. (Booking required) CRECHE		9.00 - 5.00: Midwifery Antenatal Clinic (by appointment only)	
	9.30 - 11.00: Stay, Play and Learn with Messy Play 13 months+. £1 voluntary contribution.		9.30 - 11.30: Childminders' Sessions 0-5 years	9.30 - 3.00: Health Visiting 1 & 2 year Reviews (by appointment only)	9.30 - 11.00: Dads' Stay and Play 0-5 years. 1st Wednesday of the month	9.00 - 4.00: Midwifery Postnatal Clinic (by appointment only) parents/carers and new born babies	9.30 - 11.00: Stay, Play and Learn, 13 months +. £1 voluntary contribution.			9.00 - 3.00: Health visitor Reviews (by appointment only) 0-5 years	10.30 - 12.30: Developing Good Bedtime Routines
<b>Three Trees Children's Centre, Tiverton Road, NW6 3HL. 0208 459 4385</b>	11.30 - 12.30: Stay, Play and Learn: Little Explorers (0-12 months) Sensory sessions for babies. £1 voluntary contribution.				9.30 - 10.30: BUSS group 0-5 years. 3rd Wednesday of the month		11.30 - 12.30: Stay, Play and Learn: Little Explorers (0-12 months) Sensory sessions for babies. £1 voluntary contribution.			1.00 - 2.00 Let's Talk 0-5 years	CRECHE AVAILABLE. 9th February
<b>Treetops Children's Centre, Doyle Gardens, NW10 3SQ. 0208 937 5960</b>						4.00 - 6.00: Citizens Advice Brent (by appointment only) 0-5 years					10.00 - 11.30: Fun on Saturdays: Stay, Play and Learn. 0-5 years. Alternate weeks

Brent Children's Centres: Grange Cluster Timetable: Spring Term 2019										Last updated: 11th February 2019	
Centre Name	Monday		Tuesday		Wednesday		Thursday		Friday		Saturday
	AM	PM	AM	PM	AM	PM	AM	PM	AM	PM	
Wykeham Children's Centre, Annesley Close, Neasden, NW10 0ES. 0208 937 5960	9.30 - 12.30: Well Baby Clinic (By Appointment Only) 0-5 years	1.30 - 4.00: Health Visiting Postnatal Clinic (by appointment only)	9.00 - 3.00: Midwifery Antenatal and Postnatal Clinic (by appointment only) for expectant parents/carers and new born babies.	12.30 - 2.30: ESOL with Creche 0-5 years. (Booking required) CRECHE AVAILABLE.	9.30 - 12.30: Health Visiting 1 & 2 year reviews (by appointment only)	1.30 - 4.00: Health Visiting Postnatal Clinic (by appointment only)	9.30 - 11.00: Stay, Play and Learn with Messy Play 18 months+. (Booking required). £1 voluntary contribution.	11.30 - 12.15: Story and Rhyme Time 13 months +. (Booking required). £1 voluntary contribution.	9.30 - 4.00: Midwifery Antenatal and Postnatal Clinic (by appointment only) for expectant parents/carers and new born babies.	1.30 - 3.00: Family Focus . Last Friday of the month. (booking required) CRECHE AVAILABLE	
	9.30 - 11.00: Stay, Play & Learn. 13 months+. (Booking required). £1 voluntary contribution.										
	11.30 - 12.30: Stay, Play and Learn: Little Explorers (0-12 months) Sensory sessions for babies. £1 voluntary contribution.	1.30 - 3.00: Busy Feet 18 months+. 7th January to 11th February. £1 voluntary contribution.	9.30 - 11.30: Childminders' Sessions 0-5 years		10.00 - 11.00 Small Talk 0-5 years (by appointment only)	12.30 - 2.30: Sewing with Crèche provided by Brent Start 0-5 years (booking required). CRECHE AVAILABLE	9.30 - 4.00: Citizens Advice Brent (by appointment only) 0-5 years. 1st & 3rd Thurs of every month.	12.30 - 1.30: Let's Talk 0-5 years			
	10.00 -11.00: Breastfeeding Support and Advice (by appointment only)										
Willesden Green Library, High Road, NW10 2SF. 0208 937 3400									9.30 - 10.15: Stories, Songs and Playtime for 18 months+		
									10.30 - 11.15: Stories, Songs and Playtime for 0 -18 months		





Brent Children's Centres: Stadium Cluster Timetable: Spring Term 2019									Last updated: 11th February 2019	
Centre Name	Monday		Tuesday		Wednesday		Thursday		Friday	
	AM	PM	AM	PM	AM	PM	AM	PM	AM	PM
Church Lane Children's Centre, Fryent Primary School, Church Lane, Kingsbury, NW9 8JD. 020 8937 3890	9.30 - 11.30: Midwifery Postnatal Clinic (by appointment only) parents/carers and new born babies. Call to book: 020 8235 4252 / 020 8869 2871	12.30 - 3.30: Midwifery Antenatal Clinic (by appointment only) expectant parents. Call to book: 020 8235 4252 / 020 8869 2871	9.30 - 11.30: Health Visitor Reviews and Baby Clinic (by appointment only) Call to book: 020 8102 4900	1.30 - 4.00: Development Checks 1 and 2 year old (by appointment only). Call to book: 020 8102 4900	9.30 - 11.00: Understanding your Toddler's Development Drop in Group. Children 12-24 months. 9th January - 13th February		Thursday 9.30 - 4.00: Citizens Advice Brent 0-5 years. 2nd & 4th week Booking only.	1.15 - 2.45: Stay, Play and Learn 0-5 years	9.30 - 10.30: Let's Talk 0-5 years.	1.30 - 3.30: Family Focus 29th March
		1.00 - 2.30: Understanding your Toddler's Development Drop in Group. Children 12-24 months. 9th January - 13th February		9.30 - 3.30: Midwifery Antenatal Clinic (by appointment only) expectant parents. Call to book: 020 8235 4252 / 020 8869 2871						
	10.00 - 12.00: Hassle Free Shopping: Call to book and for more information: 020 8937 3890. Monday 25th Feb.	1.00 - 2.15: Understanding your Baby's Development. 0-12 months		1.00 - 2.30: Getting Ready. Call the centre to book and for more information: 020 8937 380	10.00 - 11.00: Stay, Play and Learn 2-4 years. From 20th February		10.00 - 12.00: Family Learning Fun with Cooking. Course Dates 10th January to 14th February		9.30 - 3.30: Midwifery Postnatal Clinic (by appointment only) parents/carers and new born babies. Call to book: 020 8235 4252 / 020 8869 2871	
				2.00 - 3.00: Playgroup: at Fryent Primary School. Call for more information: 020 8205 4047	10.00 - 10.30: Parent's Voice 6th February					
Mount Stewart Children's Centre, Mount Stewart Infants School, Carlisle Gardens, Kenton, HA3 0JX. 020 8937 5970	1.00 - 3.00: Family Learning Magic Numbers. Course Dates 7th January to 11th February	1.00 - 3.00: Health Visitors' Reviews and Baby Clinic (by appointment only). Call to book: 020 8102 4900				12.00 - 3.00: Midwifery Postnatal Clinic (by appointment only) parents/carers and new born babies. Call to book: 020 8235 4252 / 020 8869 2871		Baby Massage: (small fee). (Call the centre to book and for more information: 020 8937 5970 (afternoons only) 7th of March to 4th of April	1.00 - 3.00: Midwifery Antenatal Clinic (by appointment only) for expectant parents. Call to book: 020 8235 4252 / 020 8869 287	
						1.30 - 3.00: Stay, Play & Learn with ongoing Getting Ready information. 0-5 years				
	1.00 - 3.00: Family Focus. 25th February to 25th March					1.30 - 3.30: Family Focus 30th January				1.00 - 3.00: Hassle Free Shopping: Call to book and for more information: 020 8937 5970 (afternoons only). 27th March.
Preston Park Children's Centre, College Road, Wembley, HA9 7NW. 020 8937 5980	9.30 - 3.00: Midwifery Antenatal Clinic (by appointment only) expectant parents. Call to book: 020 8235 4252 / 020 8869 2871	12.45 - 2.45: Dealing with Disobedience: Call to book and for more information: 020 8937 5980 / 020 8937 5590. Monday 25th March	9.30 - 3.00: Midwifery Antenatal Clinic (by appointment only) expectant parents. Call to book: 020 8235 4252 / 020 8869 2871	1.00 - 3.00: Family Learning Play and Learn with Books. Assessment 8th January. Course. Dates 15th January to 26th February. Call to book: 020 8937 5980 / 020 8937 5590						
	10.00 - 12.00: Family Learning Fun with Cooking. Course Dates 7th January to 11th February. Call to book: 020 8937 5980 / 0208 937 5590		10.00 -11.30: Stay, Play and Learn 0-5 years							
	10.00 -11.30: Family Focus. Call to book and for more information: 020 8937 5980 / 020.8937 5590		10.30 - 11.00: Parent's Voice 5th February							

Brent Children's Centres: Stadium Cluster Timetable: Spring Term 2019									Last updated: 11th February 2019	
Centre Name	Monday		Tuesday		Wednesday		Thursday		Friday	
	AM	PM	AM	PM	AM	PM	AM	PM	AM	PM
Wembley Primary Children's Centre, Wembley Primary School, East Lane, Wembley, HA9 7NW. 020 8937 5590	10.00 - 11.30: Understanding your child's development 1- 4 years	12.30 - 2.30pm: Family Learning Using IT with the Family. Assessment 7th January. Course Dates: 14th January - 11th February. Call to book: 020 8937 5590	9.30 - 11.00: English Conversation 29th January to 26th March  9.30 - 4.00: Citizens Advice Brent (by appointment only) expectant parents and parents with a child 0-5years		10.00 - 11.15: Understanding your Baby's Development. 0-12 months		9.30-10.30: Let's Talk 0-5 years.	1.00 - 3.00: Family Learning Magic Numbers. Assessment 10th January. Course Dates: 17th January - 28th February		2.30 - 2.30: Family Focus 26th April
The Willow Children's Centre, Barnhill Road, Wembley, HA9 9YP. 020 8937 6562	9.30 - 11.00: Understanding your Toddler's Development 12-24 months. From 18th February.		Health Visitor: 2-year Reviews (by appointment only.) Call to book: 020 8102 4900	2.00 - 3.00: Let's Talk 0-5 years.	9.30 - 11.00: Stay, Play & Learn 0-5 years	1.00 - 3.00: Family Learning Family Language and Learning. Assessment 9th January. Course Dates:16th January to 3rd April	10.00 - 11.15: Understanding your Baby's Development 0-12 months	2.30 - 2.30: Family Focus Friday 22nd February		
	10.00 - 12.00: Family Learning Story Sacks and Knitting. Call to book: 020 8937 6562 / 020 8937 3890. Course Dates: 7th January to 11th February.				10.00 - 10.30: Parents Voice 13th February	10.00 - 12.00: Dealing with Disobedience: Call to book and for more information: 020 8937 6562 / 020 8937 3890. 6th March				

Brent Children's Centres: Curzon Cluster Timetable: Spring Term 2019									Last updated: 11th February 2019	
Centre Name	Monday	PM	Tuesday	PM	Wednesday		Thursday	PM	Friday	PM
	AM		AM		AM	PM	AM		AM	
Curzon Crescent Children's Centre. Curzon Crescent, Willesden London, NW10 9SD. 020 8459 6813	09.15 - 11.15: Family English Class Assessment 14/01/2019. Starts 21/01/2019		9.30 - 10.15: Busy Feet & Oral Hygiene		9.00 - 5.00: Citizen's Advice Bureau		9.30 - 11.00: Stay, Play & Learn		9.00 – 4.00: Midwifery Clinic (Appointment only)	
	9.30 - 1.30: First Aid. Crèche available. Refundable £5 deposit given on completion of course 01/04/2019		11.00 - 12.00: "Let's Talk"		9.45 – 11.30: Childminders' Stay, Play & Learn	12:00- 1.00: Baby Massage & Breastfeeding support. 0- 9 months. £5 refundable deposit on completion of course. 16/01 - 13/02/19	9.45 - 10.30: Brent Book Library		9.30 – 11.30: Tummy Time and Breastfeeding support. Birth – 15 months	
	9.00 - 4.00: Midwifery Clinic (Appointment only)		9.00 - 4.00: Midwifery Clinic (Appointment only)			1.30 – 3.30: Weekly Walk in Baby Clinic & Breastfeeding Support (No appointment necessary)				
Challenge House Children's Centre, 1-2 Bank Building, High Street, NW10 4LX. 0208 937 4025	9.30 - 10.30: "Let's Talk"		9.30 - 11.00: Stay, Play and Learn with Busy Feet and Oral Hygiene				10.00 - 11.00: Healthy Nutrition Group (Weekly)		9.30 - 11.00: Stay, Play and Learn	
	10.45 - 12.00: Health Visitor: 1 & 2 year old review clinic								11.30 - 1.30: English Class. Continuation of English course from Autumn 2018 up until Feb half term (15/02/2019)	
									11.30 - 1.30: Move on with Confidence. 5 week confidence building course to identify strengths and skills. Crèche available. Book at reception. Assessment 1/03/19. Starts 8/03/19 - 5/04/19	
Fawood Children's Centre. 35 Fawood Avenue, Harlesden, London, NW10 8DX. 0208 965 9334	11.30 - 12.30: Sensory Play & Exploration support (Birth – 15 months) in well-equipped sensory room			1.15 – 2.45: Stay, Play and Learn	9.30 – 11.30: Triple P. Crèche available. Settling in for crèche 16/01/19. Starts 23/01/19 - 20/03/19		9.30 - 11.30: Computer Class. 8 week class for parents / carers to learn basic skills. Crèche available. 17/01 - 14/03/19	9.30 - 3.00: Health Visitor Clinic		3.30 – 4.30: Singing and signing with babies (Birth – 15 months)
				1.30 - 2.45: Come and Have Your Say in Stay and Play - 12/02/2019	9.30 – 11.30: Home Safety. Crèche available. 6/03/2019		9.30 - 11.30: Understanding your child's Behaviour. Crèche available 21/03/2019			
					3.30 – 4.30: Sensory Play and Exploration And Breastfeeding support (0-15 months)					9.30 - 11.30: Job Club. Crèche available TBC

Brent Children's Centres: Dad's Timetable: Spring Term 2019									Last updated: 11th February 2019		
Centre Name	Monday	PM	Tuesday		Wednesday	PM	Thursday		Friday	PM	Saturday
	AM		AM	PM	AM		AM	PM	AM	AM	
Alpertons Children's Centre, Ealing Road, Wembley, HA0 4PW. 0208 937 3860		2.00 - 3.30: Dads' Stay & Play, 0-5 years, 1st & 3rd Monday of the month  6.00 - 8.00: Being Dad: Three Workshops for Dads. On 4, 11, 18 February	No Sessions on Tuesdays				No sessions on Thursdays				10.00 - 11.30: Stay & Play, 0-7 years old. 19 January & 18 March
Harmony Children's Centre, 38 Bridge Road, NW10 9BX. 0208 451 4180										10.00 - 11.30: Dads Stay & Play, 0-7 years old, 9 February	10.00 - 11.30: Curious Dads. See newsletter or text Father's Worker for monthly topics. 26 January, 23, February, 30 March.
Church Lane Children's Centre, Fryent Primary School, Church Lane, Kingsbury, NW9 8JD. 020 8937 3890	9.30 - 11.00: Dads' Stay & Play, 0-5 years. 1st Monday of the month									10.00 - 11.30: Dad's Stay & Play, 0-7 years old. 5 January & 2 March	
Preston Park Children's Centre, College Road, Wembley, HA9 7NW. 020 8937 5980										10.00 - 11.30: Dads Stay & Play. 0-7 years old. 2 February	
Three Trees Children's Centre, Tiverton Road, NW10 3HL. 0208 459 4385					9.30 - 11.00: Dads' Stay & Play, 0-5 years. 1st Wednesday of the month.					10.00 - 11.30: Dads' Stay & Play 0-7 years old. 12 January. Baby Massage 9 March.	
Wykeham Children's Centre, Annesley Close, Neasden, NW10 0ES. 0208 937 5960										10.00 - 11.30: Dads' Stay & Play, 0-7 years old, 16 February	
Willesden Sports Centre Donnington Road, NW10 3QX. 020 8955 1120											6.00 - 8.00: Fathers Friday Night Family Fun. 1st Friday of month  7.00 - 8.30: Fathers Friday Night Sports Fun. 3rd Friday of month
VISITS: Please see the email newsletter or text the Fathers' Worker for more details: 07506 741 480											10.00 - 11.30: Visit to Library for Story Time, 1- 7 year olds, 4 March.

Brent Children's Centres: Childminders' Timetable: Spring Term 2019									Last updated: 11th February 2019	
Centre Name	Monday		Tuesday		Wednesday		Thursday		Friday	
	AM	PM	AM	PM	AM	PM	AM	PM	AM	PM
St Raphaels Children's Centre, Rainborough Close, NW10 0TS. 0208 937 3620	<b>No sessions on Mondays</b>						<b>No sessions on Thursdays</b>		9.00 - 12.00: Childminders' 0-5 years	
Barham Park Building Harrow Road, Sudbury, HA0 2HB. 0208 903 9541									10.30 - 12.00: Childminders' Stay, Play & Learn 0-5 years	
Granville Children's Centre, Carlton Vale, Kilburn, NW6 5HE. 0208 937 6581					10.30 - 12.00: Childminders' Stay, Play & Learn 0-5 years					
Curzon Crescent Children's Centre, Curzon Crescent NW10 9SD. 0208 459 6813			10.30 - 12.00: Childminders' Stay, Play & Learn 0-5 years		9.45 - 11.30: Childminders' Stay, Play & Learn 0-5 years					
Wykeham Children's Centre, Annesley Close, Neasden, NW10 0ES. 0208 937 5960			10.30 - 12.00: Childminders' Stay, Play & Learn 0-5 years							
Wembley Primary Children's Centre, East Lane, Wembley, HA9 7NW. 020 8937 5590									9.30 - 11.30: Childminders' Stay, Play & Learn 0-5 years	
The Willow Children's Centre, Barnhill Road, Wembley, HA9 9YP. 020 8937 6562									9.30 - 11.30: Childminders' Stay, Play & Learn 0-5 years	

Brent Children's Centres: SEND Timetable: Spring Term 2019									Last updated: 11th February 2019 <input type="checkbox"/>	
Centre Name	Monday		Tuesday		Wednesday		Thursday		Friday	
	AM	PM	AM	PM	AM	PM	AM	PM	AM	PM
Three Trees Children's Centre, Tiverton Road, London, NW10 3HL. 0208 459 4385	No sessions on Mondays				9.30 - 10.30: BUSS group 0-5 years. 3rd Wednesday of the month		No sessions on Thursdays		No sessions on Fridays	
					10.00 - 12.00: Portage Stay and Play 0-5 years, with additional needs. Last Wednesday of the month					
The Willow Children's Centre, Barnhill Road, Wembley, HA9 9YP. 020 8937 6562			9.30 - 11.30: Portage Stay and Play 0-5 years with additional needs. Second Tuesday of the month. Term-Time only							
Wembley Primary Children's Centre, East Lane, Wembley, HA9 7NW. 020 8937 5590						1.00 - 2.00: My Special Time (by invitation only). First Wednesday of every month				
Barham Park Building Harrow Road, Sudbury, HA0 2HB. 0208 903 9541						1.30 - 3.00: My Special Time (by invitation only). Last Wednesday of every month				